

LONGWOOD
GARDENS

*Capacity Distribution and Guest Circulation
COVID-19 Reopening Plan*

Longwood Gardens Phased Reopening: Guest Routing, Capacities, and Building / Structure Closures

During Phase 1, the outdoor gardens and areas will be available for guest enjoyment. To ensure continued safety for staff and guests, one-way routes and amenity limitations will be implemented to support social distancing.

- The following maps note closures, one-way routing, and available restrooms. Paths not noted are available for general use.
- Capacities for outdoor areas are included to ensure we provide more than adequate space for social distancing.
- Capacities for outdoor areas were calculated using a 10-foot radius per 2.6 guests. Guest visitation will include couples, families, and similar small groups. The calculations include this factor.
- Graphics and signage will be positioned at all closure and navigation points identified on this map.



Capacity Distribution – 485 acres

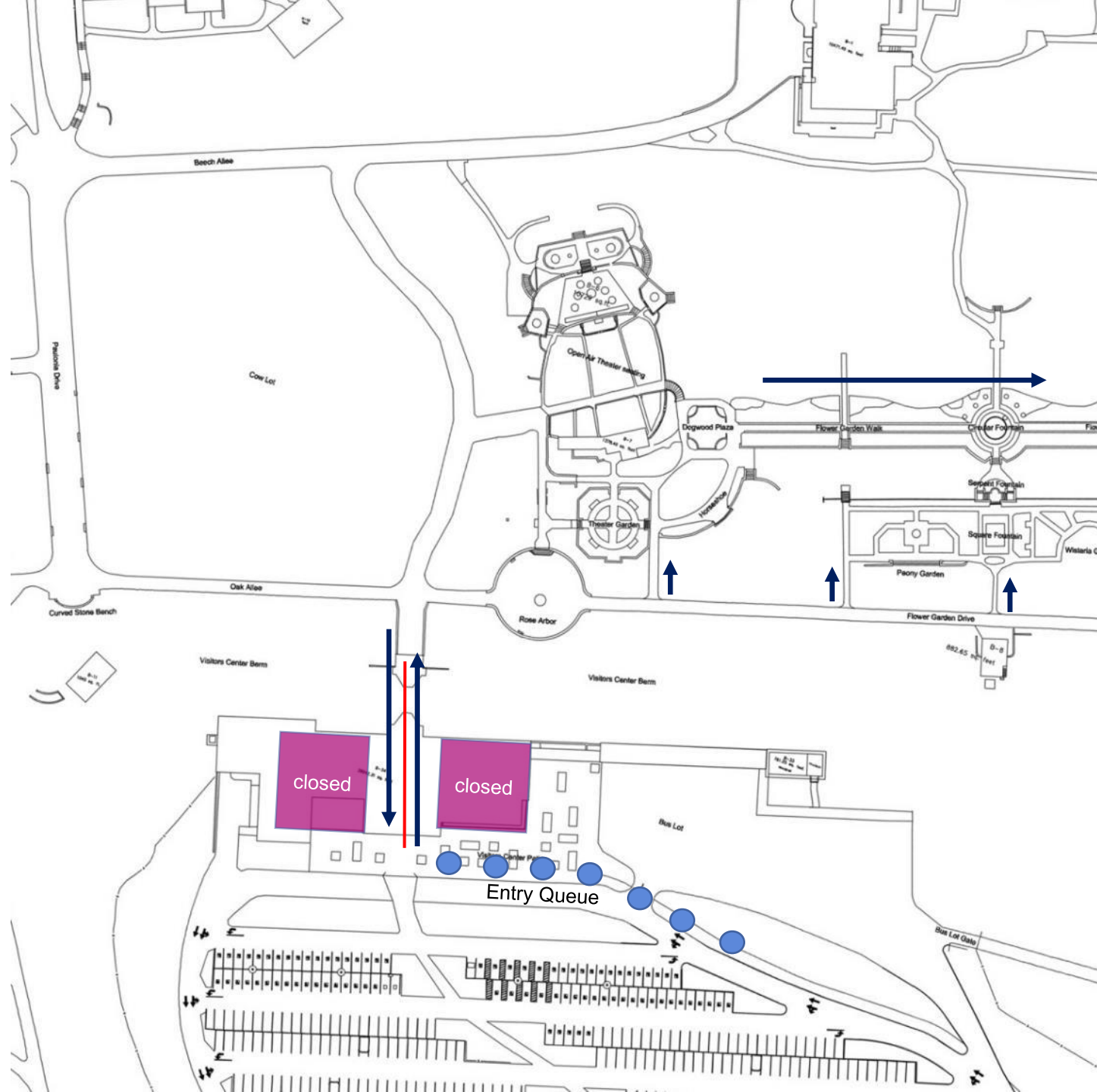
We know that different Garden areas attract larger crowds. The subsequent maps provide capacity totals. These totals are provided to show maximum guest volume that would maintain required social distances.

- PHASE 1 – MAX ONSITE – 2,400 (35% of Capacity)
- PHASE 2 – MAX ONSITE – 6,000 (75% of Capacity)
- PHASE 3 – MAX ONSITE – 8,000 (100% of Capacity)



Entry and Visitor Center

- Guests will enter / exit through the Visitor Center. Visitor Center restrooms and amenities are unavailable.
- If a queue is required, it will form along the sidewalk outside of the Visitor Center.
- Staff will be positioned to support guest entry / exit, and navigation into the Gardens.
- Flower Garden Walk will use an west-to-east one-way flow.



East Garden

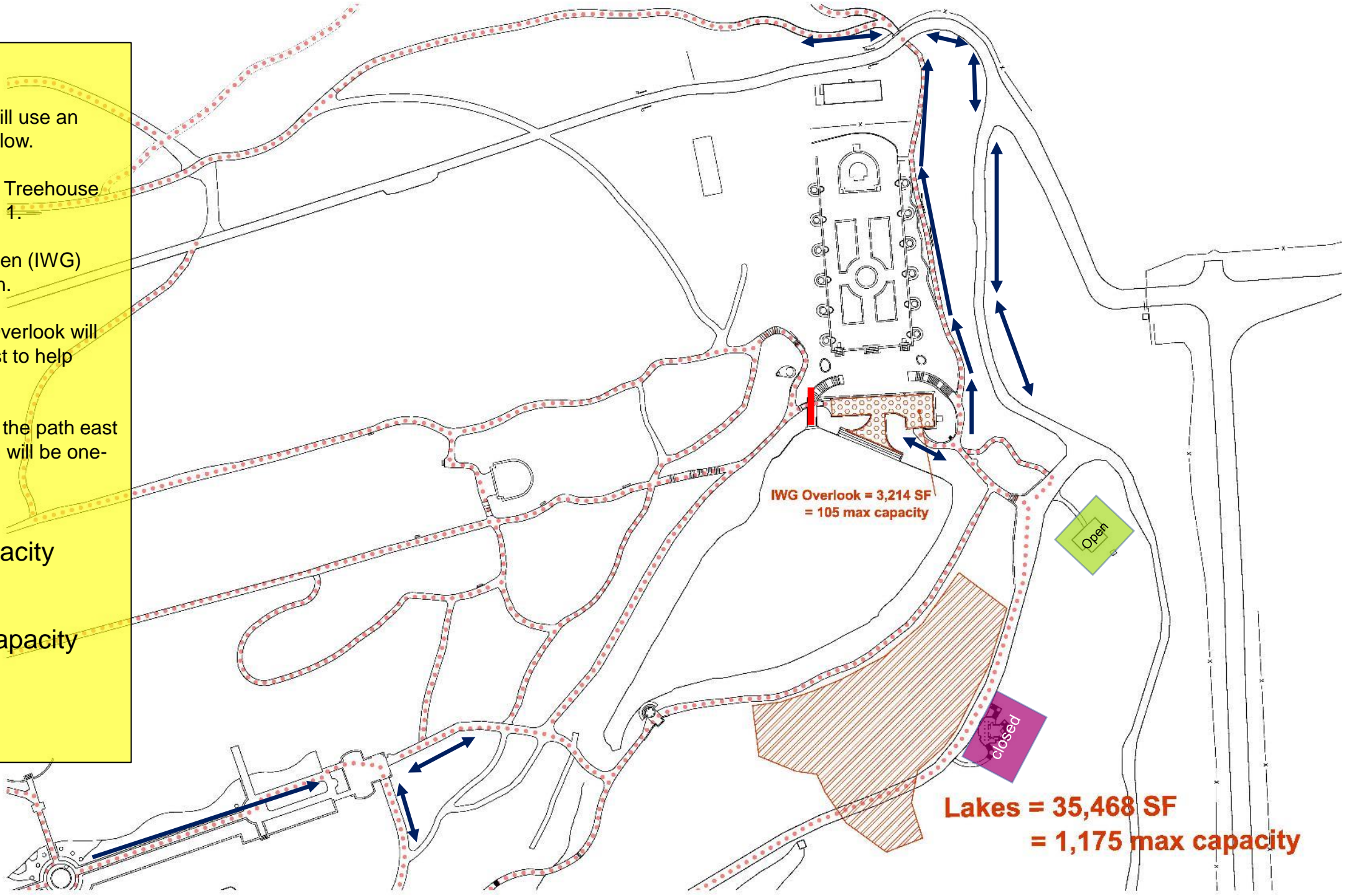
- Flower Garden Walk will use an west-to-east one-way flow.
- The Canopy Cathedral Treehouse will be closed in Phase 1.
- The Italian Water Garden (IWG) Restrooms will be open.
- Access into the IWG Overlook will be restricted to the east to help control capacity.
- Due to its narrowness, the path east and closest to the IWG will be one-way.

IWG Overlook Capacity

- 105 guests

Lake Lawn Area Capacity

- 1,175 guests



IWG Overlook = 3,214 SF
= 105 max capacity

Lakes = 35,468 SF
= 1,175 max capacity



West Garden

- Overlook bench seating, outdoor Children's Corner, 5-points hill, Urban Garden, and Pumphouse are unavailable.
- Catalpa and LLRS restrooms open.
- The Grotto is open with a one-way entry / exit.

Conservatory Overlook Capacity

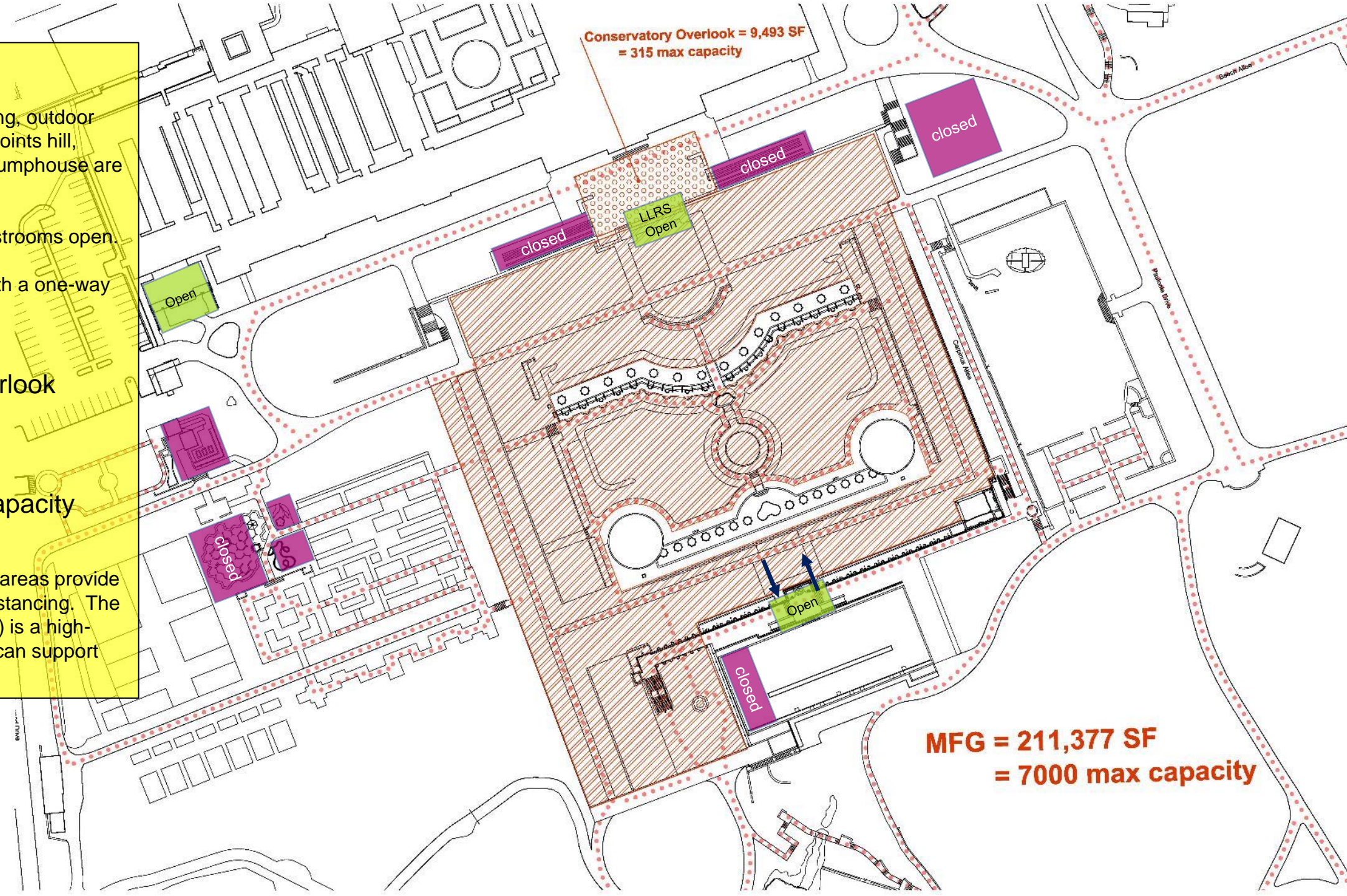
- 315 guests

MFG Total Max Capacity

- 7,000 guests

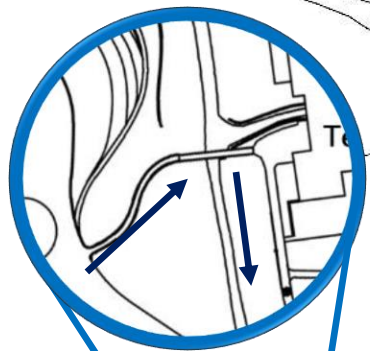
*Open spaces and lawn areas provide ample room for social distancing. The MFG Area (shaded area) is a high-volume destination that can support numerous guests.

Conservatory Overlook = 9,493 SF
= 315 max capacity



**MFG = 211,377 SF
= 7000 max capacity**





**Dining = 28,608 SF
= 950 max capacity**

**OAT = 10,145 SF
= 335 max capacity**

East Garden

- Flower Garden Walk will use a west-to-east one-way flow due to path width
- The Open Air Theatre (AOT) restrooms, Peirce-du Pont House, Birdhouse Treehouse, Doe Run Road, and Terrace Restaurant building are unavailable during Phase 1
- The bridge leading to the Terrace will use a west-to-east one-way flow.

Beer Garden/Concessions Capacity

- 950 guests

Open Air Theatre Capacity

- 335 guests



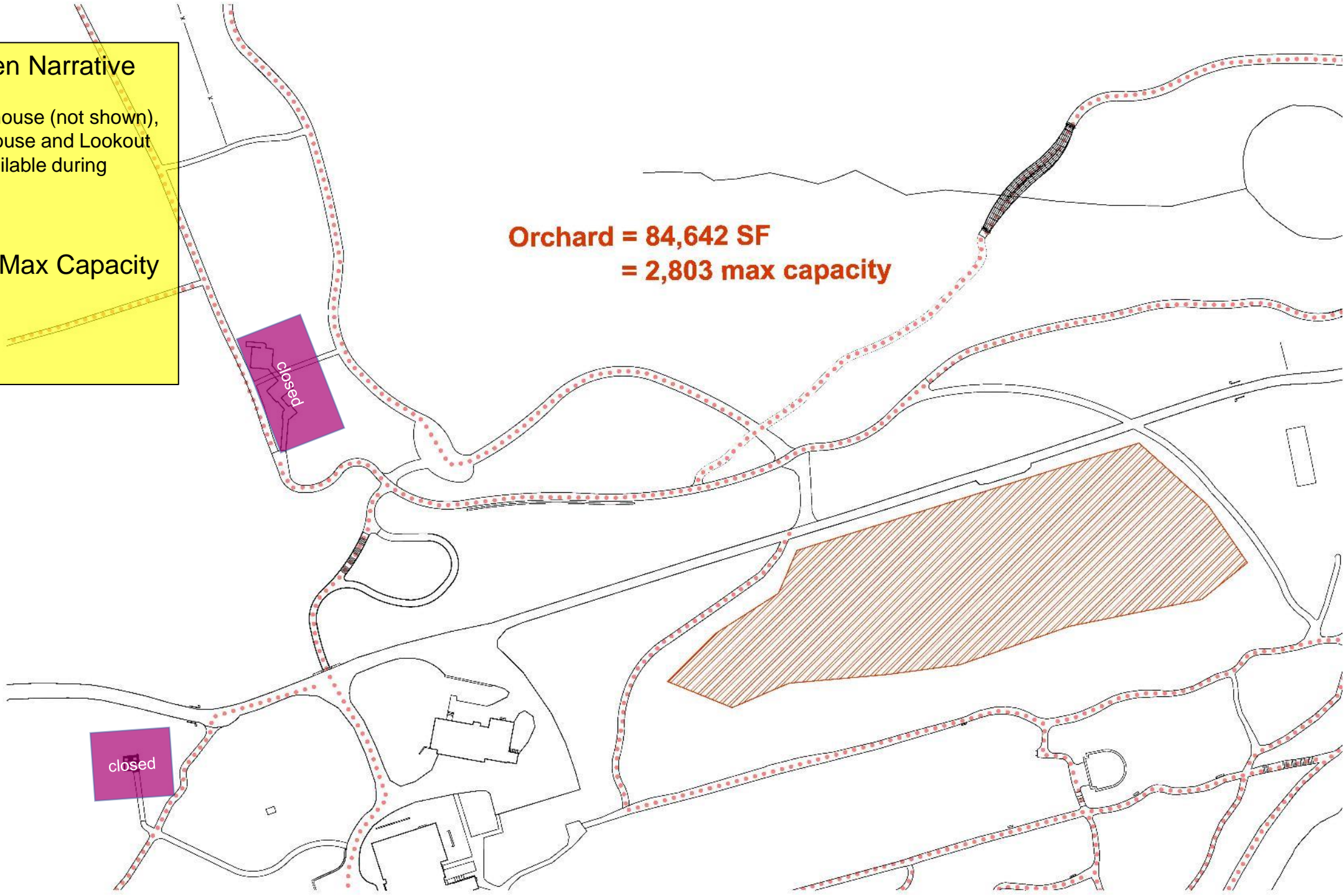
Meadow Garden Narrative

- The Webb Farmhouse (not shown), Birdhouse Treehouse and Lookout Loft will be unavailable during Phase 1

Orchard Lawn Max Capacity

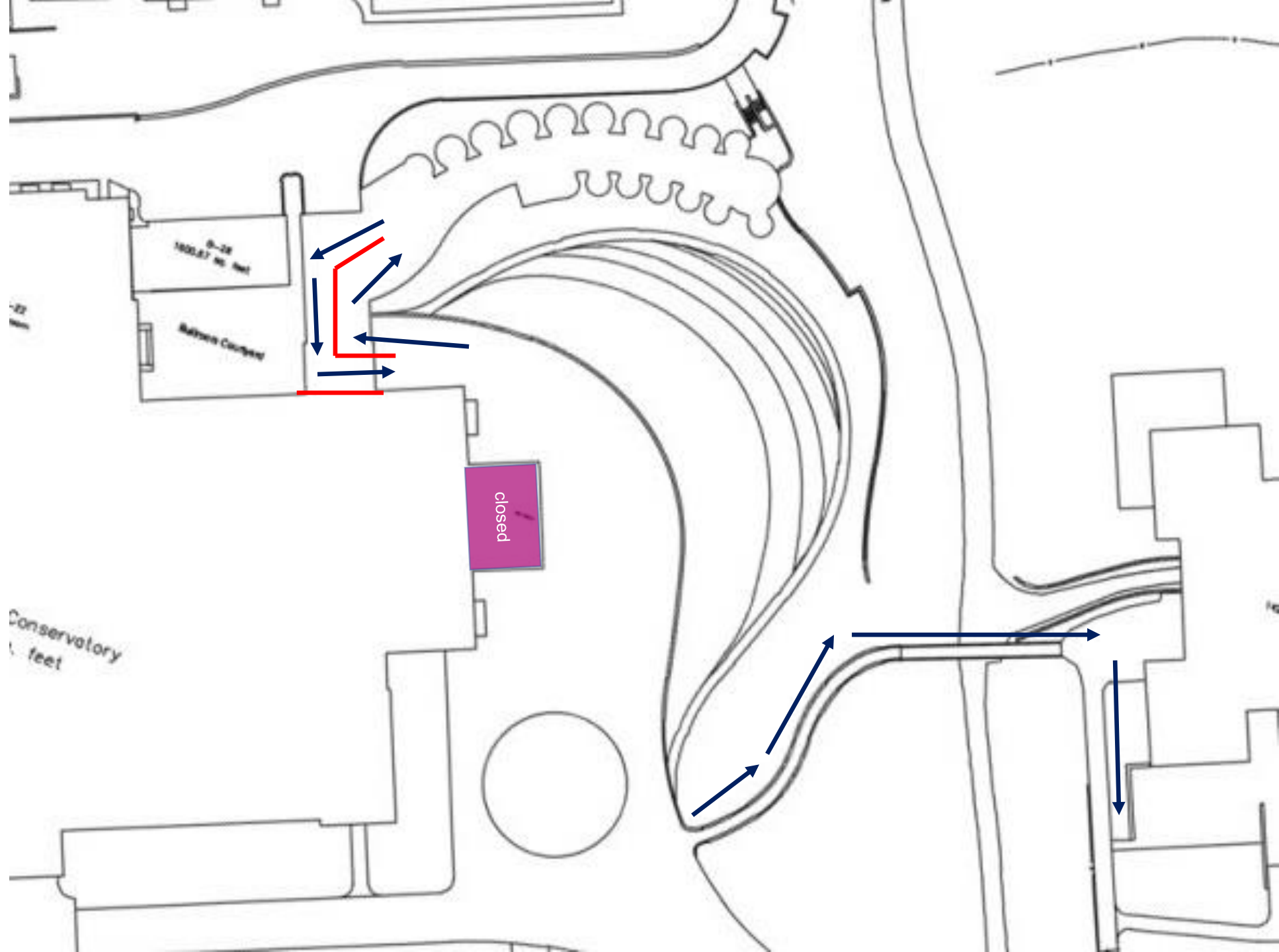
- 2,803 guests

Orchard = 84,642 SF
= 2,803 max capacity



Greenwall Restroom

- The Conservatory will be unavailable during Phase 1
- The Greenwall restrooms will be available for guest use during Phase 1. Max Capacity of restrooms and corridor is 46
- Access will be controlled by staff. A one-way entry / exit will support social distancing.
- North Door Passage doors will be propped open to provide a contactless entry / exit.



Phase 2 – Conservatory Reopening Route and Capacity

- Guests will follow a south route / north route pattern, providing a controlled and seamless entry / exit experience.
- Staff are positioned at the East Entry Pavilion to support guest entry and manage capacity.
- Indoor Children's Garden unavailable at initial portion of Phase 2

Conservatory Capacity (Max = 1,750)

- 700 guests (43% of capacity)

