

Unconventional Ways to Generate Revenue & Impact the Bottom Line!

Cindy Baker, Chicago Botanic Garden

Debbi Edelstein, Native Plant Trust

Patrick Larkin, Daniel Stowe Botanical Garden

Ken Schutz, Desert Botanical Garden





CHICAGO BOTANIC GARDEN

Unconventional Revenues: Turning landscape waste into cash

Cynthia Baker, Manager of Horticulture Services

June 2019

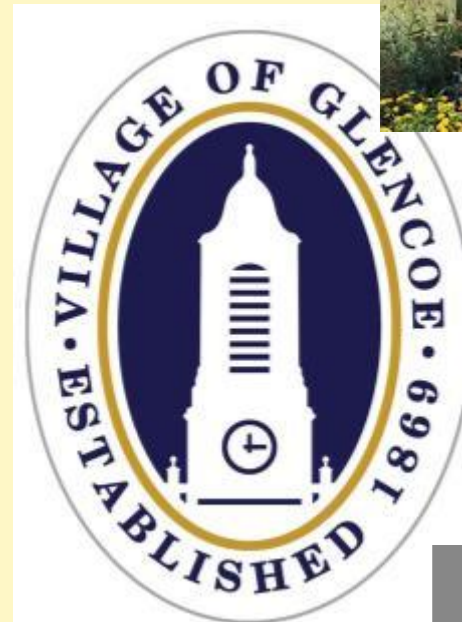
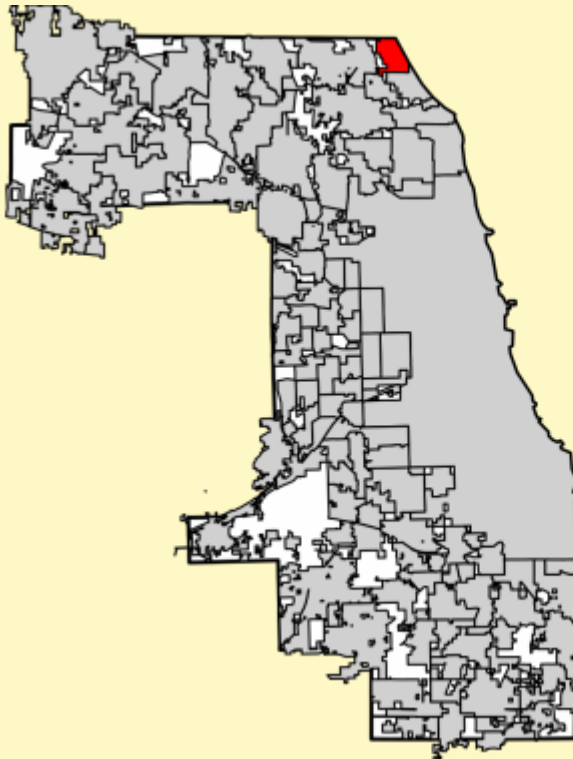
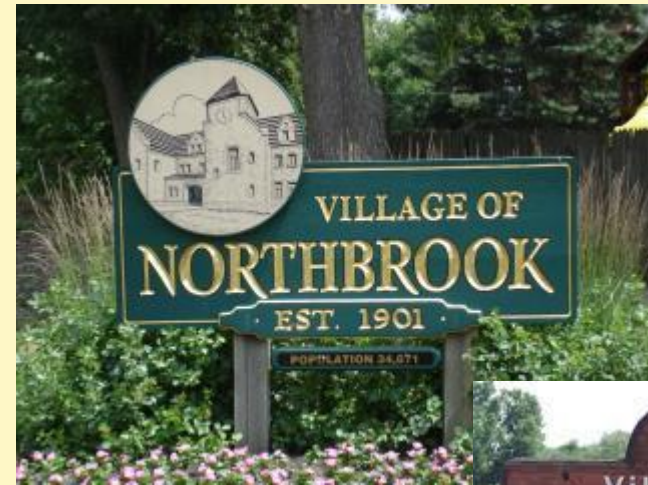
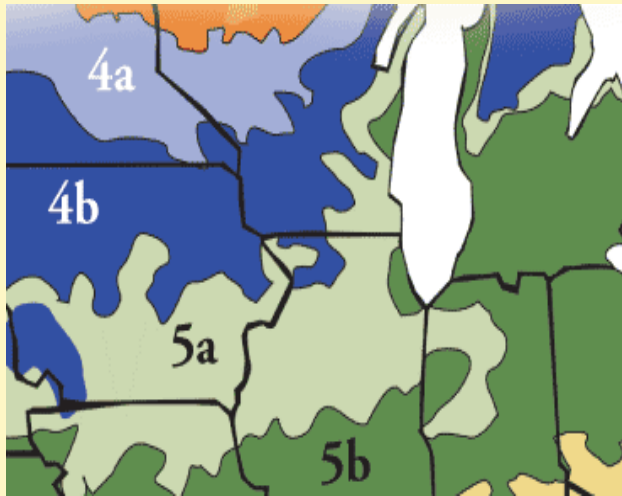


CHICAGO BOTANIC GARDEN

BRAZIL IN THE GARDEN
JUNE 15 - OCTOBER 15
NorthShore
Jesse White Library



**CHICAGO
BOTANIC
GARDEN**
*One of the treasures of the
Forest Preserves of Cook County*



Chicago Botanic Garden

- 385 acres
- 175 acres of ornamental landscape
- 27 display gardens, 4 natural areas and general grounds
- Over 1 million visitors a year
- 2.7 million plants; 13,500 taxa
- Annual budget over \$37M
- 400 employees
- 1400 volunteers
- Horticulture Division - 100







In the Beginning













Expand and Generate Revenue

- Charge municipalities a per cubic yard tipping fee to dump their landscape waste on our property
- Reduce purchases of mulch and compost
- Give away excess mulch to parks and community gardens
- Sell mulch to local landscapers

- Trade tipping fees for emergency services from the Village of Glencoe



Must have new equipment to expand!



Avg Cubic Yards of Material Received

- CBG Operations 2000-3000 cubic yards
- Village of Northbrook 3500-5000 cubic yards
- Village of Glencoe 4500-5000 cubic yards

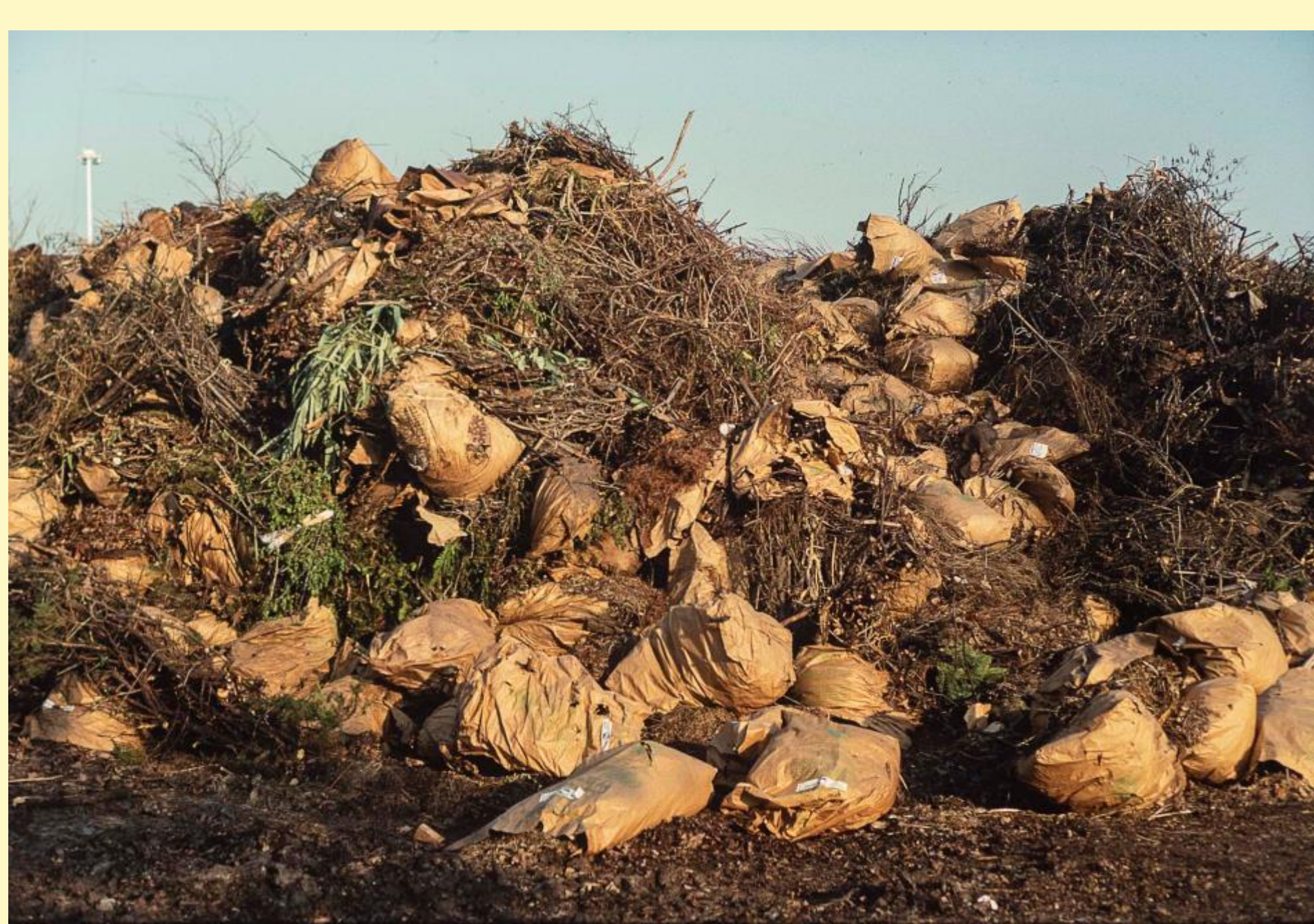
Income Generated from Tipping Fees

- Northbrook 5,000 cu yds @ \$10/cu yd = \$ 50,000
- Glencoe 5,000 cu yds @ \$10/cu yd = \$ 50,000
- Glencoe emergency services offset = <\$ 15,000>

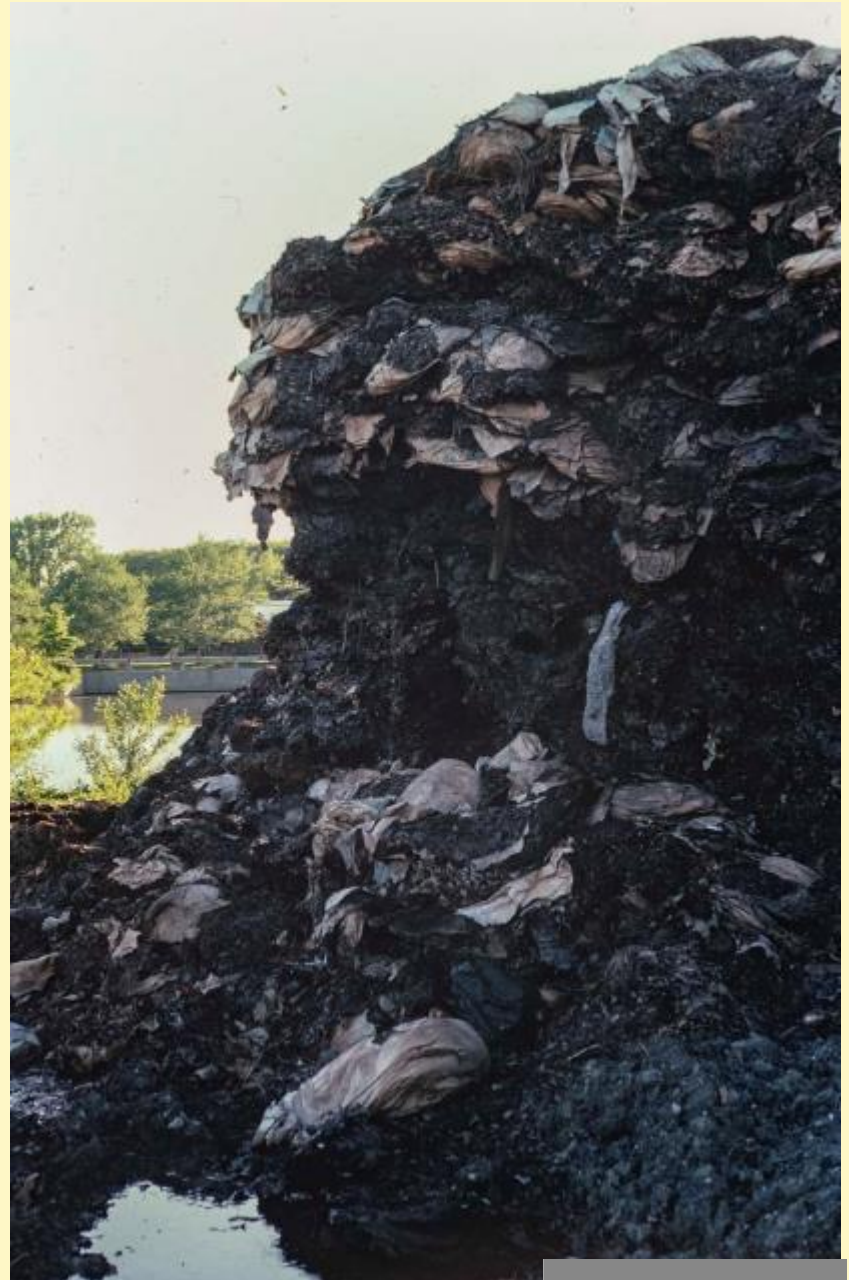
- CBG Operations 2000-3000 cubic yards
- Village of Northbrook 3500-5000 cubic yards
- Village of Glencoe 4500-5000 cubic yards

At 2019 Tipping Fees Prices

- Northbrook 5,000 cu yds @ \$20/cu yd = \$ 100,000
- Glencoe 5,000 cu yds @ \$20/cu yd = \$ 100,000
- Glencoe emergency services offset = <\$ 30,000>



**TOO
MUCH
MATERIAL**





Skokie Hwy

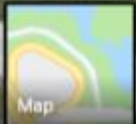
30A

Dundee Rd

Dundee Rd

Dundee Rd

Dundee Rd



Google

The IL EPA Years

- Illinois Environmental Protection Agency bans all landscape waste from landfills
- Permits required to operate receiving and transfer stations
- Regulations included detailed quality control tests that had to be met
- Start-up grants were offered to encourage new facilities and expand existing ones



Illinois Environmental Protection Agency

1021 North Grand Avenue East • P.O. Box 19276 • Springfield • Illinois • 62794-9276 • (217) 782-3397

Application for Permit Relating to a Composting Facility for Landscape Waste (LPC-PA12)

1. Site Identification:

A. IEPA ID Number: _____

Facility Name: _____ County: _____

Street Address: _____ P.O. Box: _____

City or Township: _____ State: IL Zip Code: _____

B. Legal description of the site and legal description of the facility boundary, if different than the property boundary. You may provide additional information, if necessary, by clicking on the button below.

Latitude: _____ Longitude: _____
(Deg) (Min) (Sec) (Deg) (Min) (Sec)

Add Information

Delete Information

2. Facility Description:

Facility Type: _____

Existing BOL Permit Number: _____

If a renewal, also list the Permit Modification Numbers:

CHICAGO BOTANIC GARDEN

LANDSCAPE WASTE PROGRAM

TESTING PROCEDURES

1. Once per year, collect finished mulch product samples per instructions for sampling methods in 35 Ill. Admn. Code 830.507 and send to lab for testing of:
 - a) materials which pose a definite hazard to human health due to physical characteristics, such as glass or metal shards;
 - b) pH;
 - c) inorganic concentrations of materials listed in 35 Ill. Admn. Code 830.TABLE A;
 - d) fecal coliform;
 - e) man-made materials larger than four millimeters in size exceeding 1% of the end-product compost, on a dry weight basis.







Lake Forest council confronts smelly issue

By LeAnn Spencer
TRIBUNE STAFF WRITER

2 panelists ousted for seeking compost-site probe

Even as mowers began giving spring crew cuts to city lawns, the Lake Forest City Council decided to dismiss two members of an ad hoc committee formed to study a controversial compost site that takes the city's yard waste.

The two committee members had asked state environmental regulators for an independent investigation of the compost

yard. City aldermen said it is a conflict of interest for those sitting on a citizens advisory committee to solicit an outside investigation.

In addition, the committee had included only people who live near the compost facility, and aldermen decided that they wanted the committee to include

residents from throughout Lake Forest.

"There will be a new broad-based committee appointed," said Ald. Gail Hodge, chairman of the city committee. "We need this in a rational manner... so when we make a decision we have

through a thorough public process."

The two committee members who were dismissed, Steve Handier and Carol Larsson, live

Bluff.

"We think we are doing something that is a benefit to this city," Handier said. "I thought [we] were appointed precisely because we do have a viewpoint."

For almost a year, neighbors have complained about noxious odors from the compost operation.



Yard waste piles up at the Lake Forest compost and recycling site along Illinois Highway 60 near Washington Road.

Clearing the air on compost

Neighbors want study of dust blowing from Lake Forest site

By LeAnn Spencer
TRIBUNE STAFF WRITER

After Susan Garrett's family dog, Coby, developed a run infection caused by the infected spores from a fungus, so one could pinpoint the source.

But Garrett has her suspicions. She wonders whether the fungus spores, produced in decaying vegetation, were blown into her back yard from Lake Forest's nearby compost operation.

That incident last year and a spate of hot odors from the compost site have become the backdrop for residents in the affluent west side neighborhood. They are demanding a study of compost operations to determine whether they pose a health threat to those living nearby.

"We can't absolutely prove that the fungus came from the compost site, but the dog's illness got us going," said Garrett, whose 3-year-old golden retriever is blind in one eye and has trouble breathing.

Garrett and her neighbors fear that what happened to the dog could happen to neighborhood children or those attending a middle school on land next to the compost site.



Steve photo by Sue Posen

Susan Garrett wonders if fungus spores produced by rotting vegetation at the Lake Forest compost site led to her dog's health problems. The 2-year-old golden retriever is blind in one eye and has trouble breathing.

"These kids potentially could be affected," she said.

The Lake Forest debate is one of many such controversies. The battles over smelly and possible health risks have been waged from south suburban Greenwood to Aurora in DuPage County and in the North Shore towns of Evanston and Waukegan. Residents have complained of everything from increased bronchitis to severe asthma and allergic attacks.

Some doctors are asking that compost sites be kept away from residences, and one has gone so far as to advise that they be 1 mile from the nearest house.

Federal and state public health officials and environmental regulators can't say with assurance that airborne particles from rotting compost are completely safe. They are quick to add that there is no evidence that they are harmful to neighbors or that there

San Clement, Penn. is

continued from

A 30-year-old man and court secretary were named County Board members.

According to the board, the man and woman were named for their work in the County Board.

The plan which was chosen for the school is scheduled for Tuesday.

Lake County Board members, including the man and woman, were named for their work in the County Board.

Garrett can't prove that the fungus came from the compost site, but the dog's illness got her going. She wonders whether the fungus spores, produced in decaying vegetation, were blown into her back yard from Lake Forest's nearby compost operation.

That incident last year and a spate of hot odors from the compost site have become the backdrop for residents in the affluent west side neighborhood.

They are demanding a study of compost operations to determine whether they pose a health threat to those living nearby.

McHenry County composter shuts down amid complaints

By Charles Mount
TRIBUNE STAFF WRITER

Disposal of yard waste throughout much of McHenry County was thrown up for grabs Wednesday when the owner of the only commercial compost processing facility quietly shut it down.

Henry DeBoer, owner of Compost Enterprises Inc., south of Union, declined to say why he was closing the 6-acre site, but an Illinois Environmental Protection

through June 25, said Gary Cima, environmental protection specialist for the state EPA.

The facility is on East Coral Road about 4 miles east of U.S. Highway 20. It has been the subject of numerous complaints from nearby residents since it began accepting yard waste in October 1989.

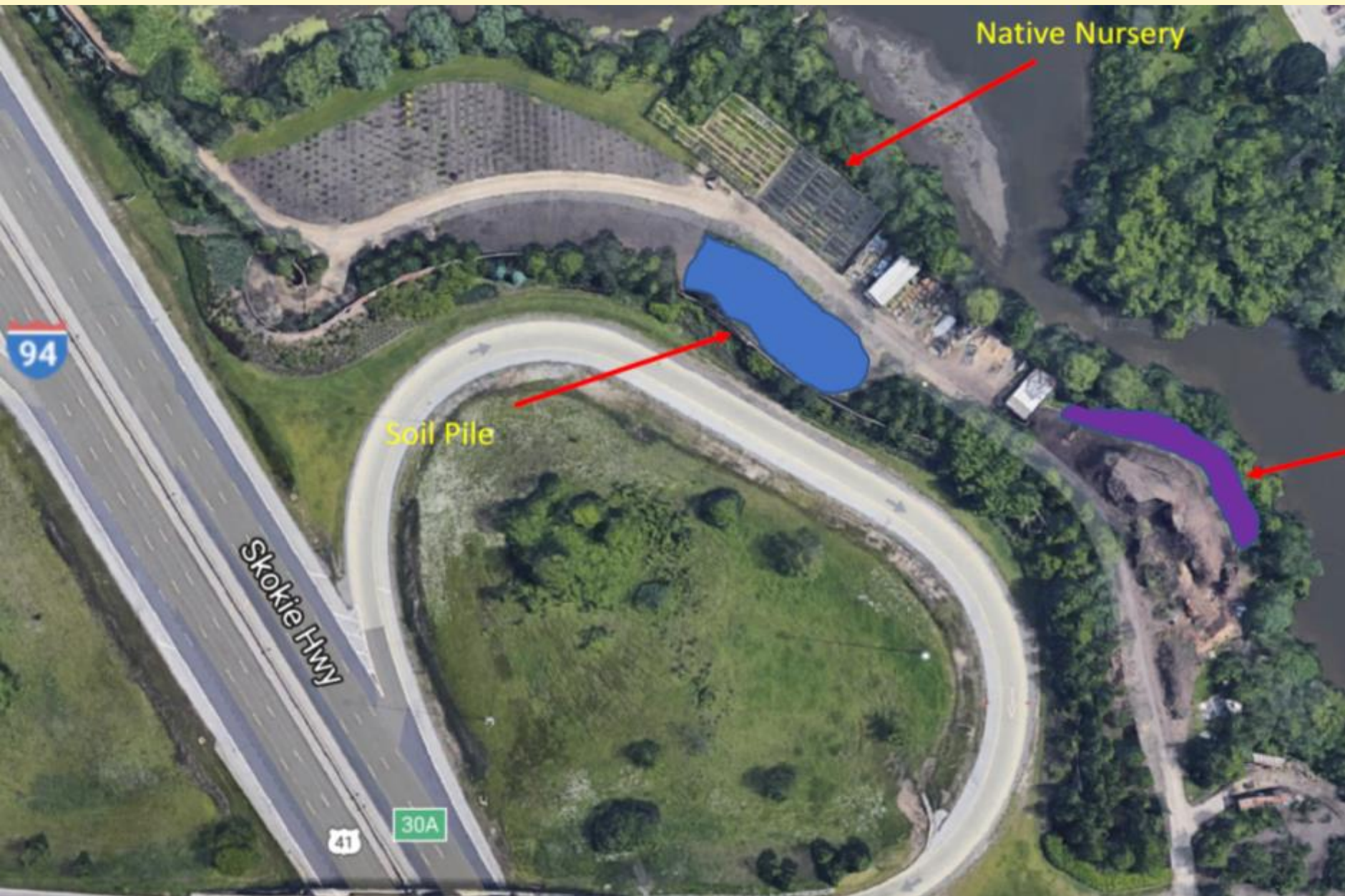
The complaints included reports of foul odors similar to those of horse manure, as well as noise from heavy equipment and trucks.



who
then
to
city
of
so
en,



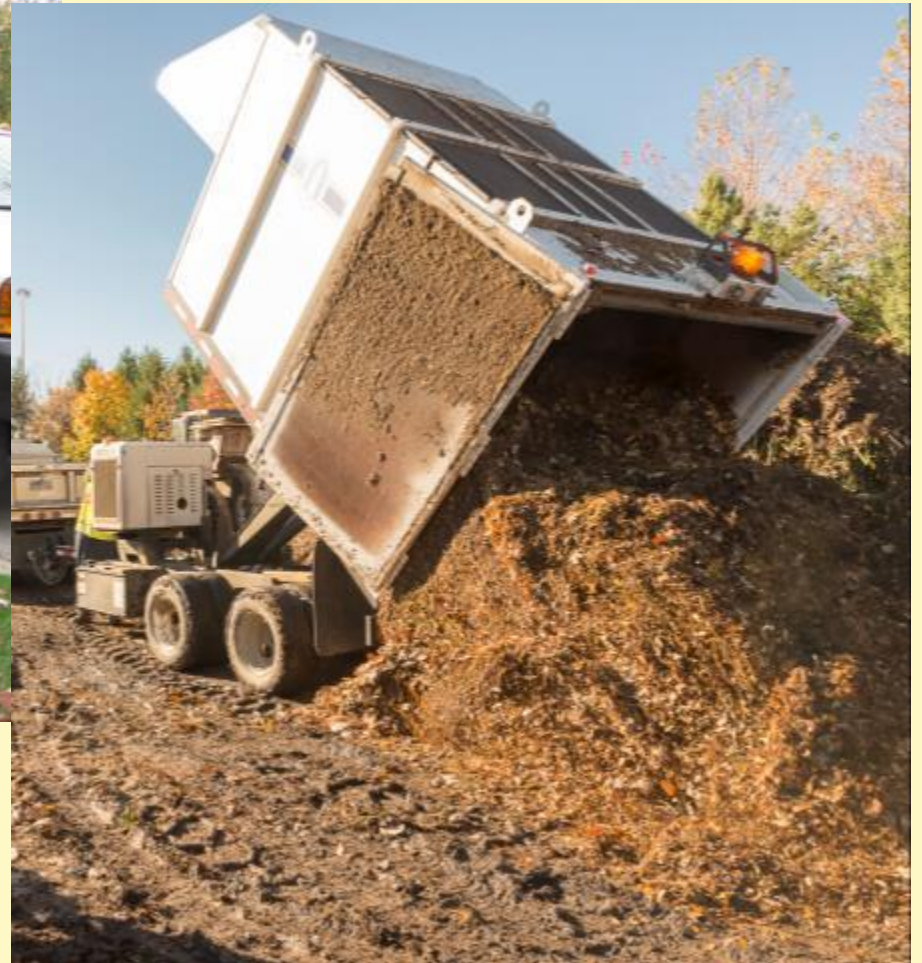
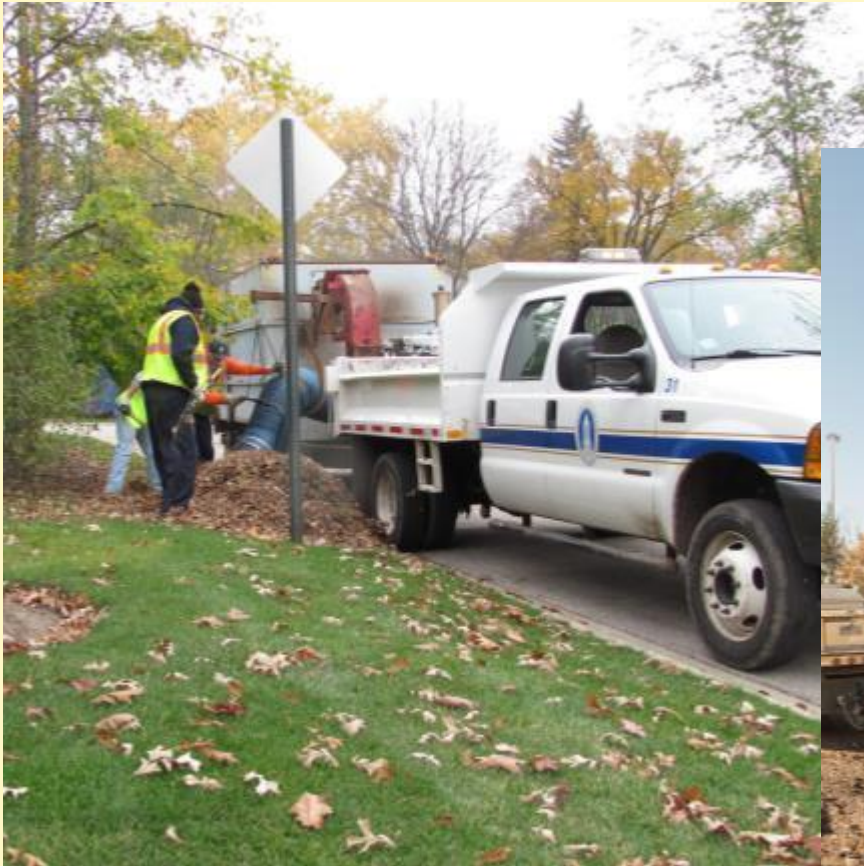




Drastic Downsize

Glencoe Fall Leaves	3000 cu yds
CBG Operations	3000 cu yds

The value of the incoming Village of Glencoe fall leaves is determined to be equivalent to the value of the emergency services offered – whatever that may be.





The true Gold Leaf!





New equipment arriving July 2019
ProGrind 2000. Cost \$334,000



What didn't work ☹️

- We had much more landscape waste than we could process, use, sell and even give away
- Collection bags shredded with the mulch was messy
- Foul odors when summer grass clippings were included
- Neighbors unhappy when we stopped giving away mulch

- Tub grinder burned up



- Truck burned up



What did work 😊

- Generated some significant revenue for many years
- Reduced the amount of mulch and compost purchased



- Continued our leaves for emergency services trade with our closest neighbor, the Village of Glencoe



- Received international media coverage when our landscape waste operation was featured in a segment of '*Dirty Jobs*'



Good Advance Planning = Success

- Rules and regulations
- What products you want to create
- Space available for receiving, grinding, turning windrowing and storing – possibly long term
- Equipment and labor capacity
- What to do if you accumulate excess
- Realistic business plan
- Green industry competitors
- Public reaction, especially neighbors

