



Lewis Ginter Botanical Garden

# **RALLYING SUPPORT FROM WITHIN THE COMMUNITY**

---

**THE ROLE OF PUBLIC GARDENS IN REVITALIZING COMMUNITIES**

**DURON CHAVIS, COMMUNITY ENGAGEMENT COORDINATOR // LEWIS GINTER BOTANICAL GARDEN**

**AMERICAN PUBLIC GARDENS ASSOCIATION  
HAMILTON, ONTARIO  
JUNE 20, 2017**

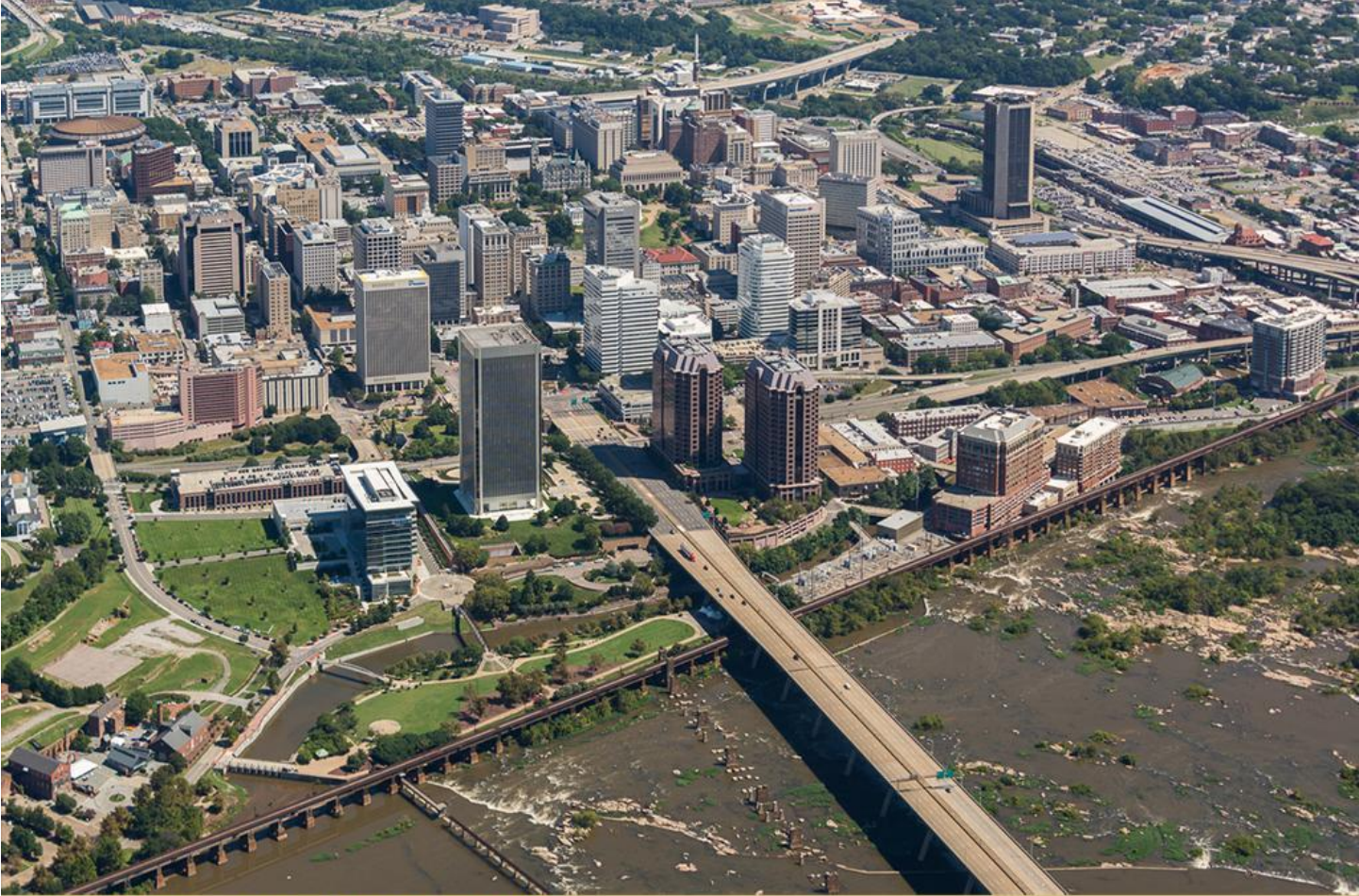




## **LEWIS GINTER BOTANICAL GARDEN: EXPANDING BEYOND OUR WALLS**

**FOUNDED IN 1984 // 12 THEMED GARDENS // 50 ACRES DEVELOPED // 467K ANNUAL VISITORS // BUDGET FY 2017 APPROX \$7.2 M**





## THE CONTEXT OF RICHMOND VIRGINIA

DEMOGRAPHICS 26% POVERTY // HIGHLY CONCENTRATED IN THE CITIES EASTERN AND SOUTHERN AREAS DUE TO HISTORICAL TRAUMA



A close-up photograph of two hands cupped together, holding a mound of dark, rich soil. The background is blurred, showing what appears to be a person's face. Overlaid on the center of the image is the 'Beautiful RVA' logo. The word 'Beautiful' is written in a purple, cursive script, and 'RVA' is written below it in a green, stylized, blocky font.

# Beautiful RVA

**BEAUTIFUL RVA: COLLABORATION FOR COLLECTIVE IMPACT**  
LEWIS GINTER SERVES AS THE COMMUNITY ANCHOR FOR THIS MULTI-SECTOR COALITION





## **THE GINTER URBAN GARDENER PROGRAM**

**12 WEEKS TRAINING CITIZENS IN URBAN GREENING, COMMUNITY TRUSTBUILDING, PROJECT MANAGEMENT & VOLUNTEER COORDINATION**





## **PLANTING IN THE HARD SPACES**

**HISTORIC SIXTH MOUNT ZION BAPTIST CHURCH GARDEN DEVELOPED THROUGH COMMUNITY-LED DESIGN & IMPLEMENTATION PROCESS**





## **PLANTING IN THE HARD SPACES**

**HISTORIC SIXTH MOUNT ZION BAPTIST CHURCH GARDEN DEVELOPED THROUGH COMMUNITY-LED DESIGN & IMPLEMENTATION PROCESS**





## **EMPHASIS ON WORKING WITH VS DOING FOR**

**THROUGH COLLABORATION & INVESTMENT IN PEOPLE, WE CULTIVATE ENABLING ENVIRONMENTS FOR URBAN GREENING & BUILD COMMUNITY**







An aerial photograph of the University of Wisconsin-Madison campus. The image shows several large, multi-story brick buildings with red roofs, interspersed with green lawns and trees. In the bottom left corner, there are three tennis courts with green surfaces and red borders. The top of the image shows the calm blue waters of Lake Monona. The text "Allen Centennial Garden" is overlaid in a large, bold, dark green font across the center of the image.

# Allen Centennial Garden

Elin Filbey

[efilbey@wisc.edu](mailto:efilbey@wisc.edu)



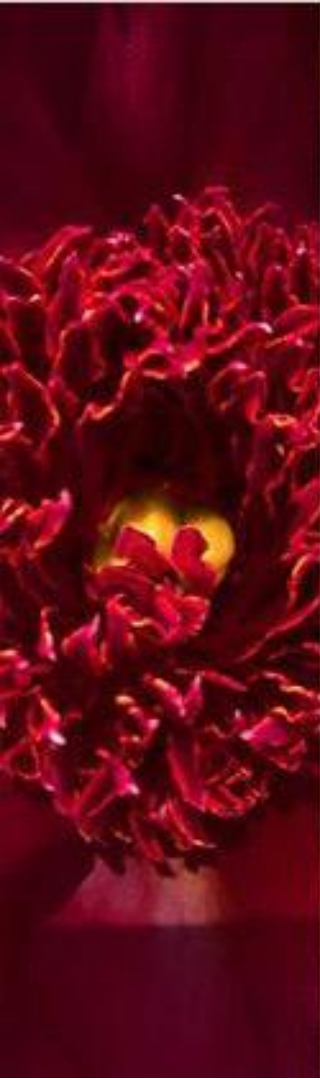




- **Founded in 1989**
- **2.5 acres**
- **4 FT staff, 2 apprentices, 9 interns, 40+ volunteers**
- **300 attendees at facilitated programs in 2015 to over 15,000 in 2018**
- **75% of programs presented with a partner**











- **Get specific about your audience**
- **Start by introducing yourself and your garden**
- **Community-led programs (OF/BY/FOR ALL)**





## Specializations in Flowers

Flower parts are modified in many ways. From simple variations to highly complex forms, in which the various parts may be difficult to identify.









Open House & Allen Centennial Garden presents:

# Gay Gardens

A spring semester program series where we  
will plant different house plants and learn  
how to care for them!

Mon, Jan 28th 5:30pm

Mon, Feb 25th 5:30pm

Mon, March 25th 5:30pm

Mon, April 29th 5:30pm

All materials will be provided, just show up for a great time!

Contact Whitney or Travis with any questions













# Coded Gardens

Exploring barriers to  
access through dialogue



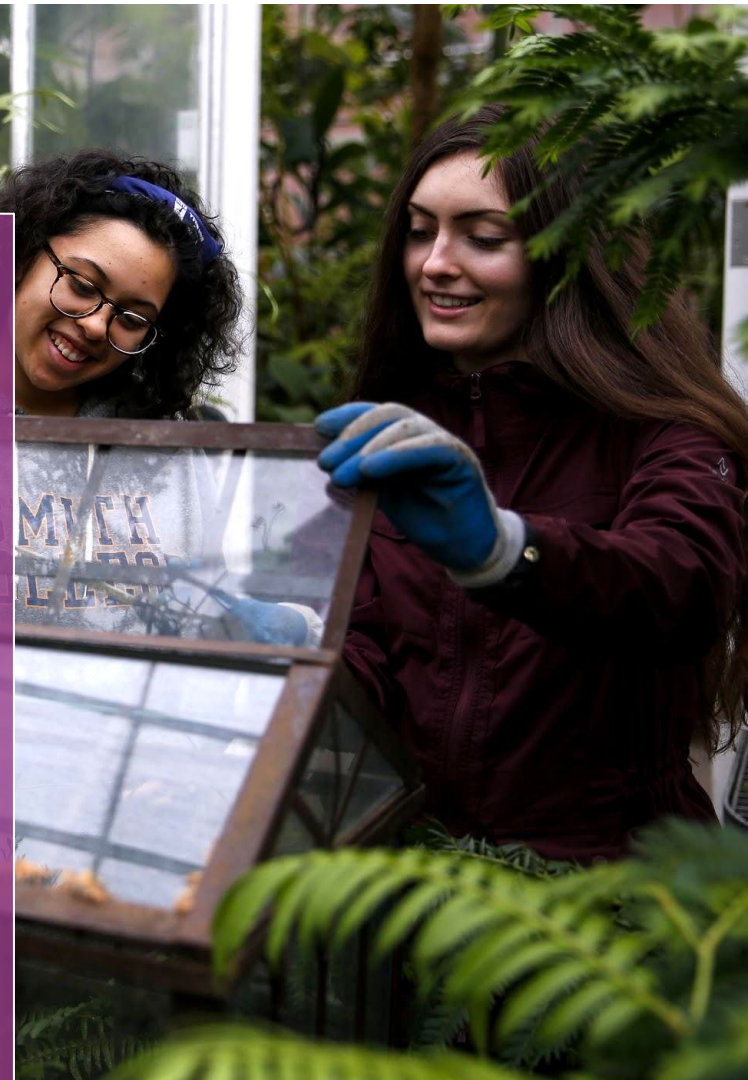
the  
**Botanic Garden**  
of Smith College

Karime Gutierrez  
Tim Johnson  
Gaby Immerman



# Smith College

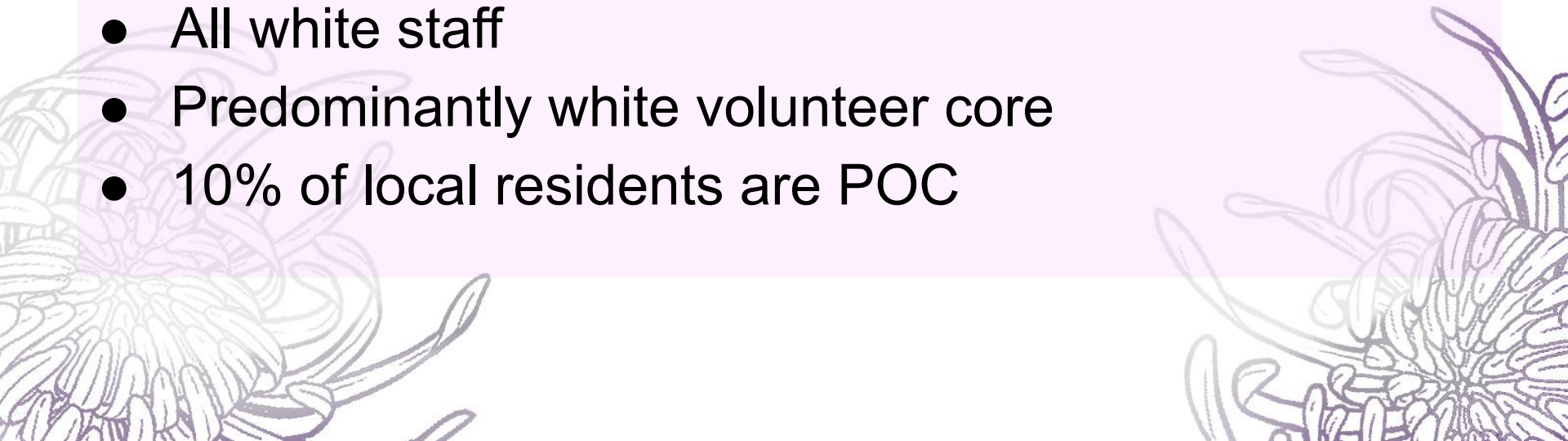
- Private Liberal Arts College
  - Historically Women's College
  - Engineering, Statistics & Data Science, Computer Science, Neurobiology, Environmental Science & Policy
  - 2,500 undergraduate students
  - 32.5% students of color in 2018-2019
- Botanic Garden of Smith College
  - Est. 1893
  - Arboretum, formal gardens, conservatory
  - 6,000 accessions
  - 14 staff + student engaged learners





# 10 Year Trends|Botanic Gardens as White Space

- 17.5% of 360 horticulture students identify as POC
- 4.8% of 104 interns identify as POC
- All white staff
- Predominantly white volunteer core
- 10% of local residents are POC





# Conceptualization of Listening Sessions

A woman with long dark hair, wearing a grey knit beanie and an orange long-sleeved shirt, is shown in profile, looking upwards and holding a small yellow flower. She is seated at a table. In the background, other people are visible, some looking down at their work on the table. The scene appears to be a workshop or a listening session.

- Smith College Unity Organizations
- Listening session framework
  - Outreach + Assessment
  - 2 hour events
  - Hands-on Activity
  - Shared meal
  - IRB consent form
  - Listening session



# Questions

1. What type of interactions have you had with gardens in your life, either here at Smith or elsewhere? What were those experiences like for you?
2. What messages do the botanic garden spaces at Smith send to you about who is welcome in these spaces and why?
3. What are the most substantial barriers you see to student inclusion and engagement with the botanic garden?
4. Have you had experiences in the conservatory, or in gardens around campus where you felt unwelcomed?
5. What are the first signs you notice that tell you that you are welcome in a space?
6. What else would you like us to know?



# Impact

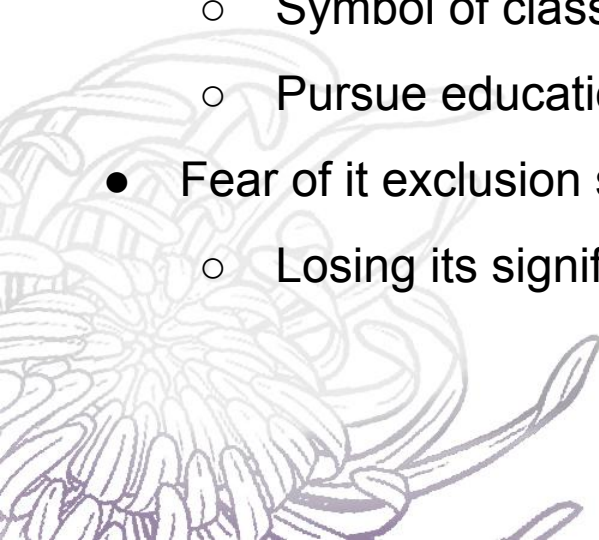
A group of students are working in a pottery studio. In the foreground, a young woman with long brown hair and glasses is looking down at a table covered with many yellow sticky notes. She is pointing at one of the notes with her right index finger. To her left, another student is partially visible, looking at a document. In the background, a young man with glasses is smiling and looking towards the right. On the far right, another student is working with a pottery wheel. The background is filled with shelves of finished terracotta pots.

- 92 students
- Organizations
  - Black Students Alliance
  - International Students Organization
  - Latin American Students Organization
  - Smith African and Caribbean Students Association
  - Asian Students Association



# Overall feedback: views on Botanic Gardens

- Positive feelings overall
  - Helping family, community gardens
- Some were steered away from it
  - Symbol of class
  - Pursue education so they “won’t need to live off the land”
- Fear of it exclusion should gardening become “trendy”
  - Losing its significance and history





# Outreach for a more inclusive community

- Institutional racism exists
  - Students experience racism at Smith
  - Students of color are outnumbered wherever they go
- Targeted outreach
  - The most effective way to welcome everyone
- Motives to be in a garden
  - Opening doors is not enough!
  - Give students a reason to come, until they realize they don't need one



A photograph of three young people, two women and one man, smiling and talking in what appears to be a greenhouse or conservatory. The woman on the left has dark curly hair and is wearing a dark top. The woman in the middle has long dark hair and glasses, wearing a blue top. The man on the right has short brown hair and is wearing a blue and white striped shirt. In the background, there are plants and a sign that says "orchid-gami". A small yellow flower is hanging on the left. A book titled "Celebrating The Botanic of Smith College" is visible on the right.

*“Confront bias and racism to build a culture of conscious inclusion and social justice activism”*

- Active recruitment and engagement with Unity Organizations
- BRIDGE Pre-Orientation Program
- Program co-creation|Late Nights at Lyman



# This Summer's Intern Class

## Ethnic/Racial Identity

Indian

10.0%

Arab-American

10.0%

Latinx

10.0%

Latinx (Salvadoran-American)

10.0%

Puerto Rican Hispanic

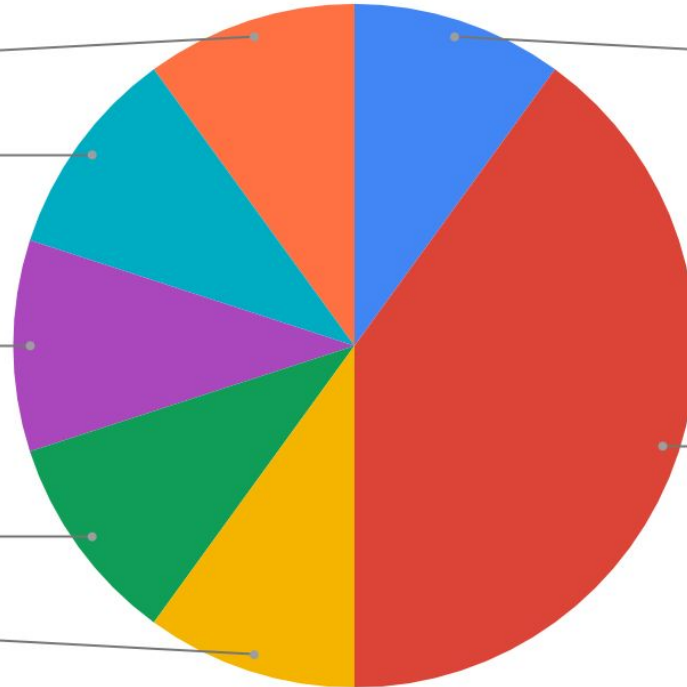
10.0%

White & Jewish

10.0%

White

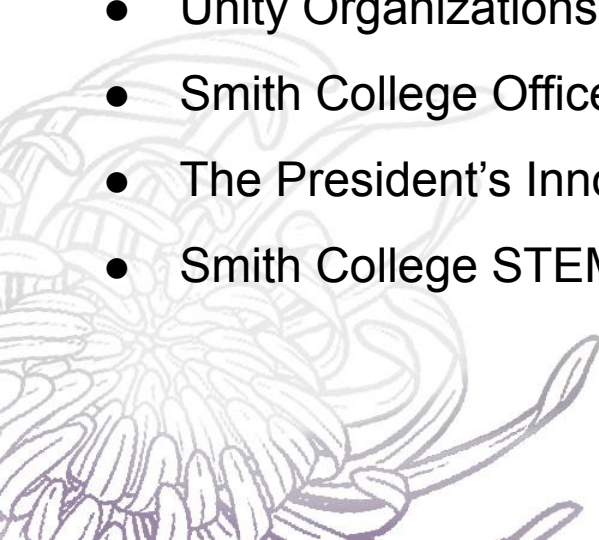
40.0%





# Acknowledgements

- Gaby Immerman, Landscape and Education Specialist
- Tamar France '18
- Esmeralda Mendoza '21
- Unity Organizations of Smith College
- Smith College Office of Multicultural Affairs
- The President's Innovation Challenge Program
- Smith College STEM departments











CHICAGO BOTANIC GARDEN

# Windy City Harvest

## Food, Health and Jobs

---



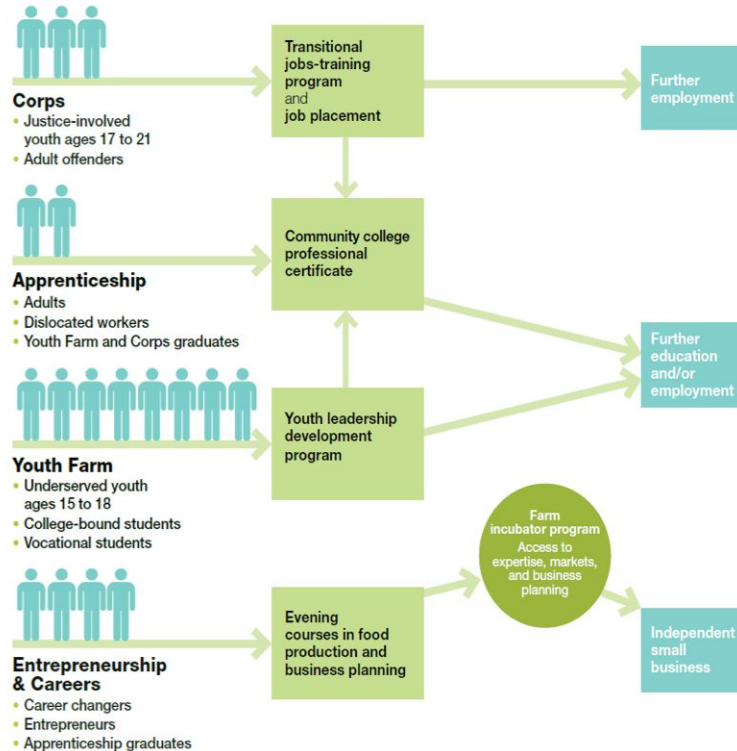






# Windy City Harvest

Four program components operating at 13 sites in Chicago area





# Windy City Harvest

## Harvest Corps



### Work Experience for Returning Citizens

- 14 week paid on the job training
- Employment assistance finding full-time work in food system
- Opportunity for farm entrepreneurship

CHICAGO BOTANIC GARDEN







# Windy City Harvest

## Youth Farm



### Work Experience for High School Students

- 8-10 weeks paid work experience after school and summer
- Social Emotional Learning with Urban Agriculture as vehicle
- Opportunity for farm entrepreneurship



CHICAGO BOTANIC GARDEN



CHICAGO BOTANIC GARDEN







# Windy City Harvest

## Apprenticeship

### Credit Courses for Technical Skills in Agriculture



- 9 months of lab, course and fieldwork
- 31 credit hours; financial aid eligible
- 14 week on the job paid work experience





Legends South Incubator Farm



# The Farm on Ogden

## Chicago Botanic Garden & Lawndale Christian Health Center

---

