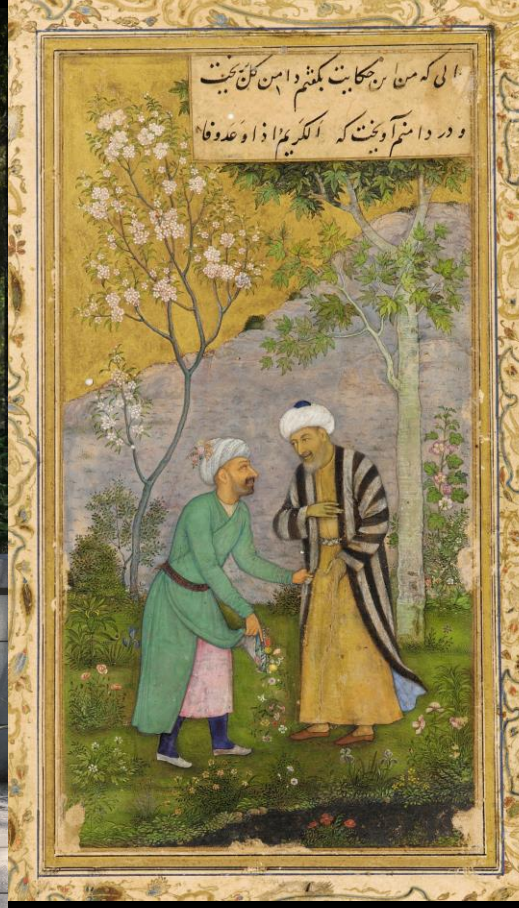


# CREATION OF A CONTEMPORARY ISLAMIC GARDEN

## Aga Khan Garden, University of Alberta



Ruby Swanson, University of Alberta Botanic Garden  
Thomas L. Woltz, Nelson Byrd Woltz Landscape Architects



# University of Alberta Botanic Garden

- Zone 3 garden, 15 minutes outside of Edmonton
- 80 acres of cultivated gardens
- 160 acres of natural forest area
- 8,000 actively managed plants; show houses; pavilions



# Patrick Seymour Alpine Garden



# Kurimoto Japanese Garden



# Indigenous Garden



# Natural Areas



# Kids in the Garden & Green School

Award-winning curriculum-based environmental education programs for over 17,000 school children per year.





# Cultural Events

## Japanese Spring Festival



# Private Events



# Luminaria in December



You are invited to visit the University of Alberta Botanic Garden



# Aga Khan Garden, Alberta



# Aga Khan Garden, Alberta



# Aga Khan Garden, Alberta



میان غرب و جنوب باغ حوض ده در دمی است اطراف تمام  
درختهای نارنج است درختهای نارنج است کردا کرد و خوش تمام  
سبز که زار است جای عین باغ همینست در وقت زرد شدن  
نارنجها بسیار خوب می نماید خیلی باغ خوبی طرح شده و طرف



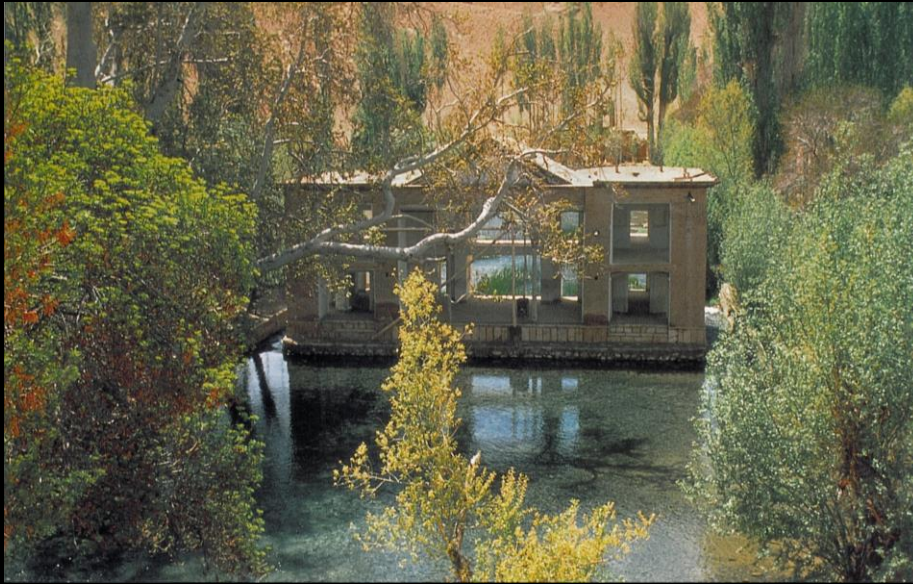
Water







Fatehpur Sikri, India

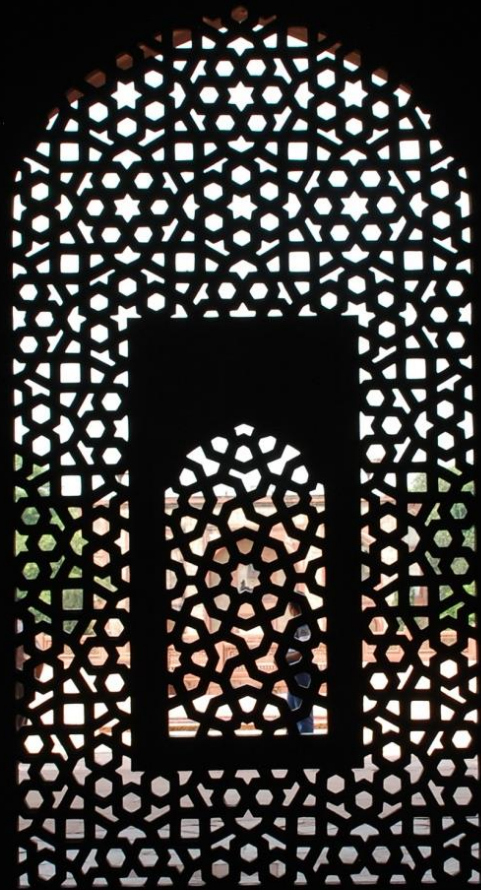


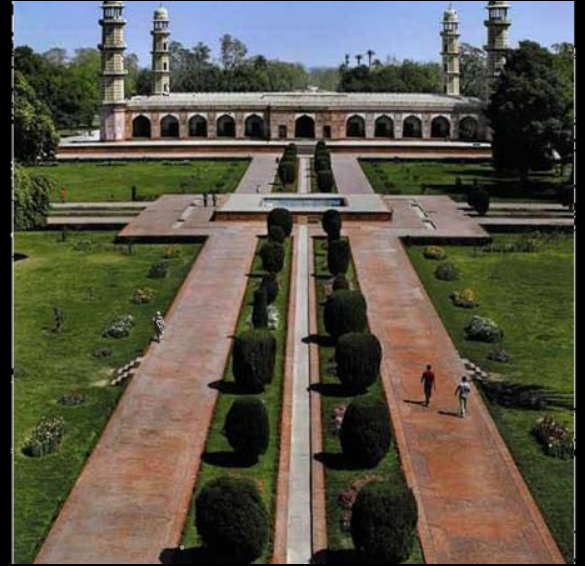
Chesme 'Ali, Iran (19<sup>th</sup> c.)

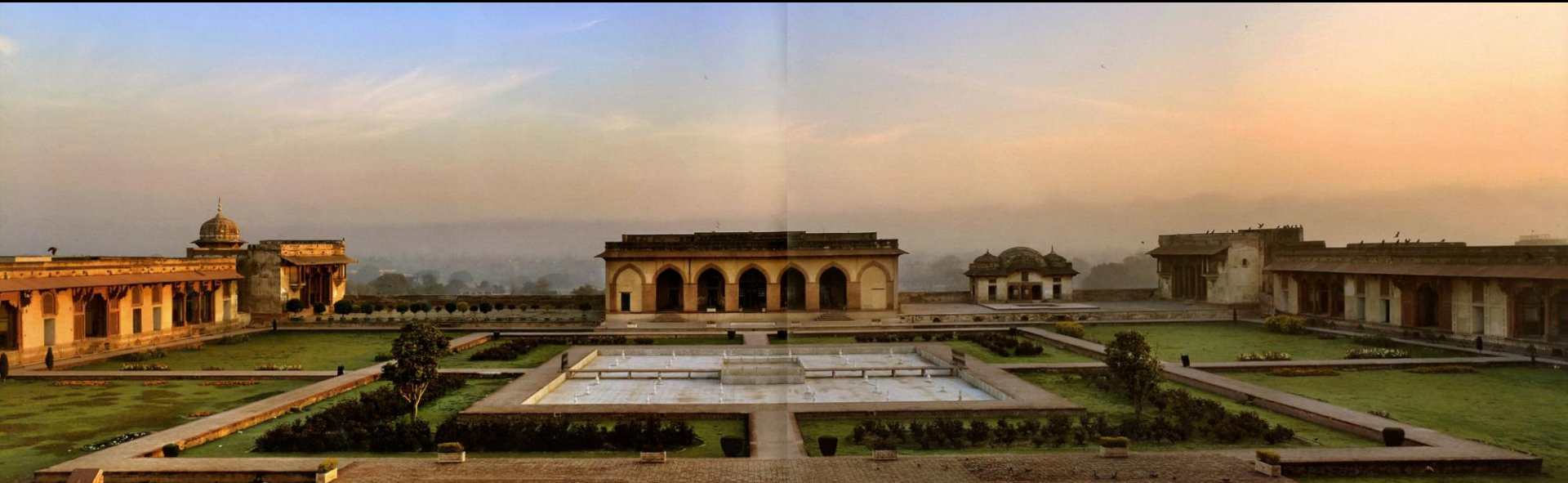


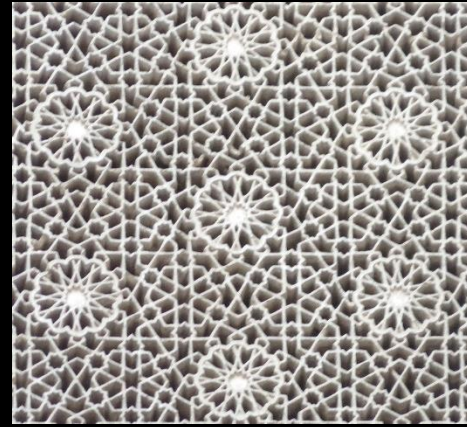
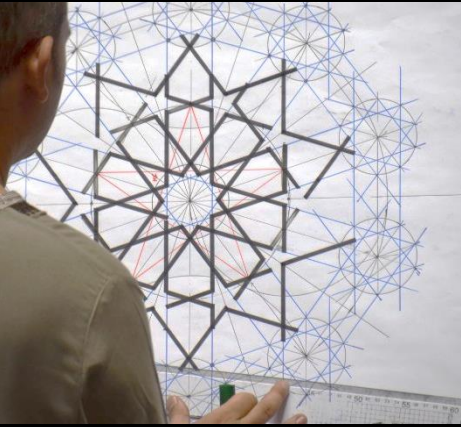
Mostowfi Garden, Tehran, Iran (19<sup>th</sup> c)

**Geometry**











Al-Azhar Park, Cairo



Nishat Gardens, Kashmir



Genaralife, Alhambra, Spain

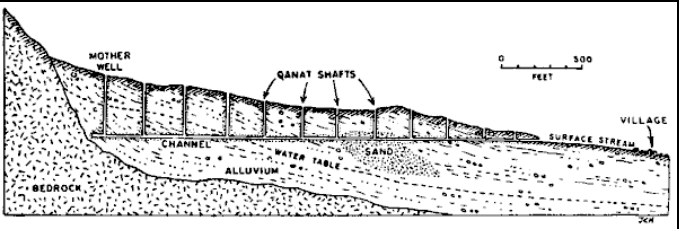
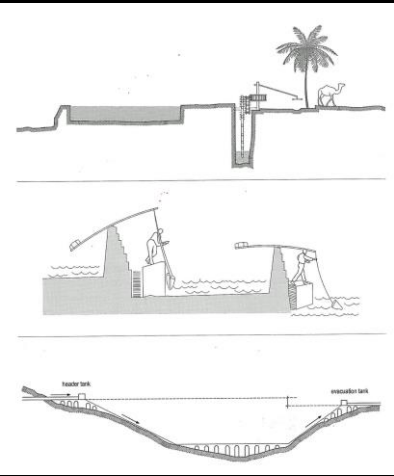
**Experience /sound**



**Production**

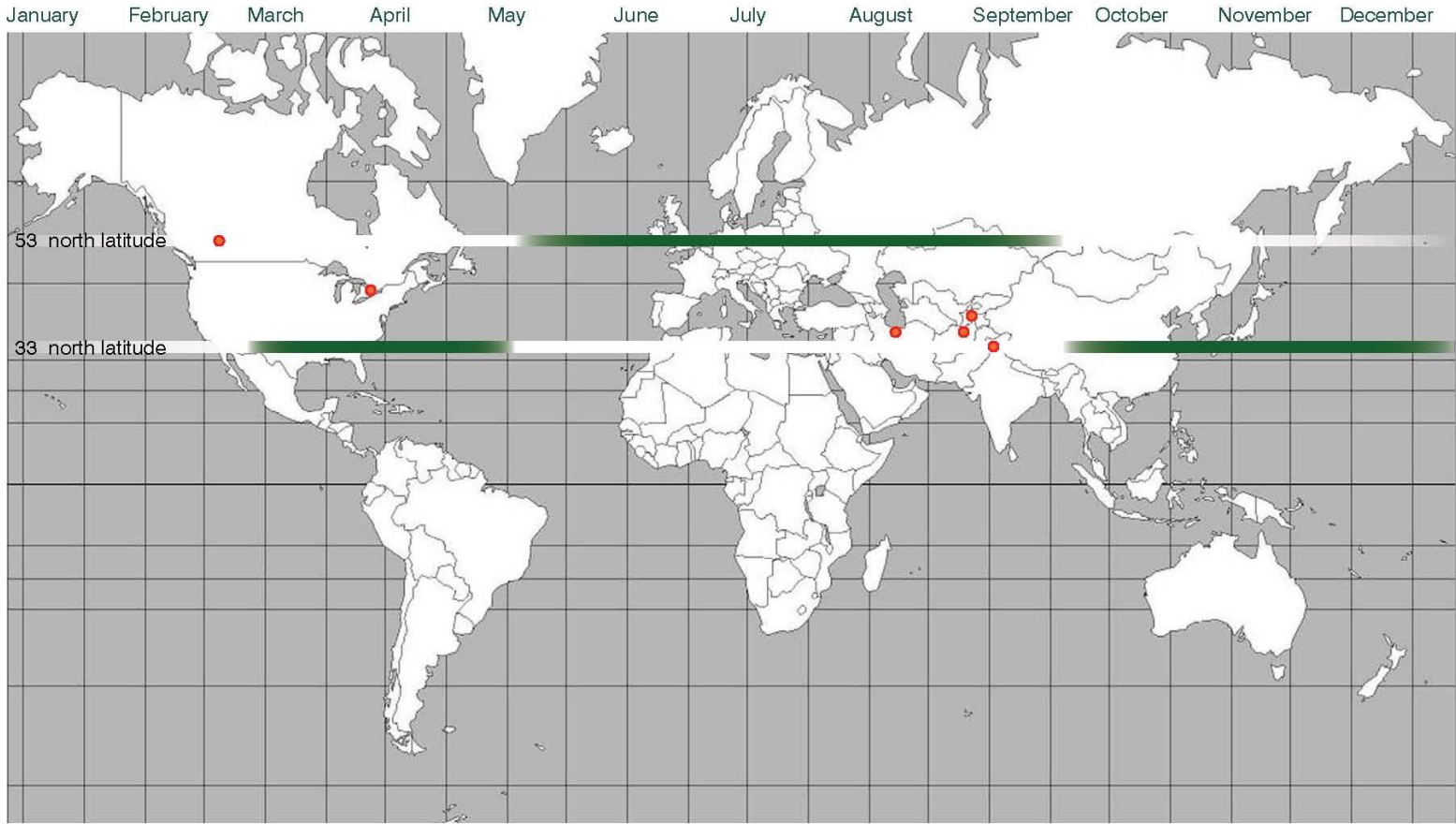








# Growing Season



Herbaceous,  
Groundcover, &  
Aquatic Plants



*Artemisia schmidtiana* 'Nana'  
Silver mound artemisia



*Perovskia atriplicifolia*  
Russian sage



*Arabis caucasica* 'Snowcap'  
Arabis rockcress



*Sagina subulata*  
Irish moss



*Caltha palustris*  
Marsh marigold



*Nymphaea odorata*  
Water lily

Perennials  
Grasses



*Echinacea* spp.  
*Echinacea purpurea*



*Liatris* spp.  
Blazing star



*Hemerocallis* spp. (Daylily)  
*Hemerocallis lilloasphodelus*



*Papaver orientale*  
Poppy



*Bouteloua gracilis*  
Blue grama grass



*Deschampsia cespitosa*  
Tufted hair grass

Shrubs



*Cornus stolonifera*  
Red Stem dogwood



*Symphoricarpos albus*  
Snowberry



*Elaeagnus commutata*  
American silverberry



*Rosa acicularis*  
Prickly Wild Rose



*Viburnum trilobum*  
American cranberrybush



*Philadelphus lewisii* Howard  
Blizzard mockorange

Ornamental &  
Bustan Trees



*Ulmus americana* 'Brandon'  
American elm cultivar



*Sorbus decora*  
Showy mountain ash



*Malus* spp. (Crabapple)  
*Malus* 'Radiant'



*Prunus* spp. (Plums, Cherries)  
*Prunus cerasus* 'Evans'



*Pyrus* spp. (Pears)  
*Pyrus ussuriensis*

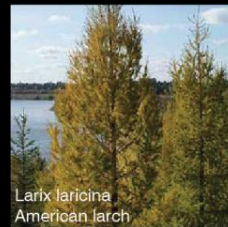


*Crataegus* spp. (Hawthorne)  
*Crataegus mordenensis* 'Toba'

Core Trees



*Picea engelmannii*  
Silver spruce



*Larix laricina*  
American larch



*Populus tremuloides*  
Quaking aspen



*Pinus banksiana*  
Jack pine



*Betula papyrifera*  
White Birch



*Picea glauca*  
White spruce











Imrie Wetland

Calla Pond  
~2 acres

Proposed  
Islamic Garden  
Design Envelope  
~11.85 acres

Kurimoto  
Japanese Garden  
5.4 acres

Private Property

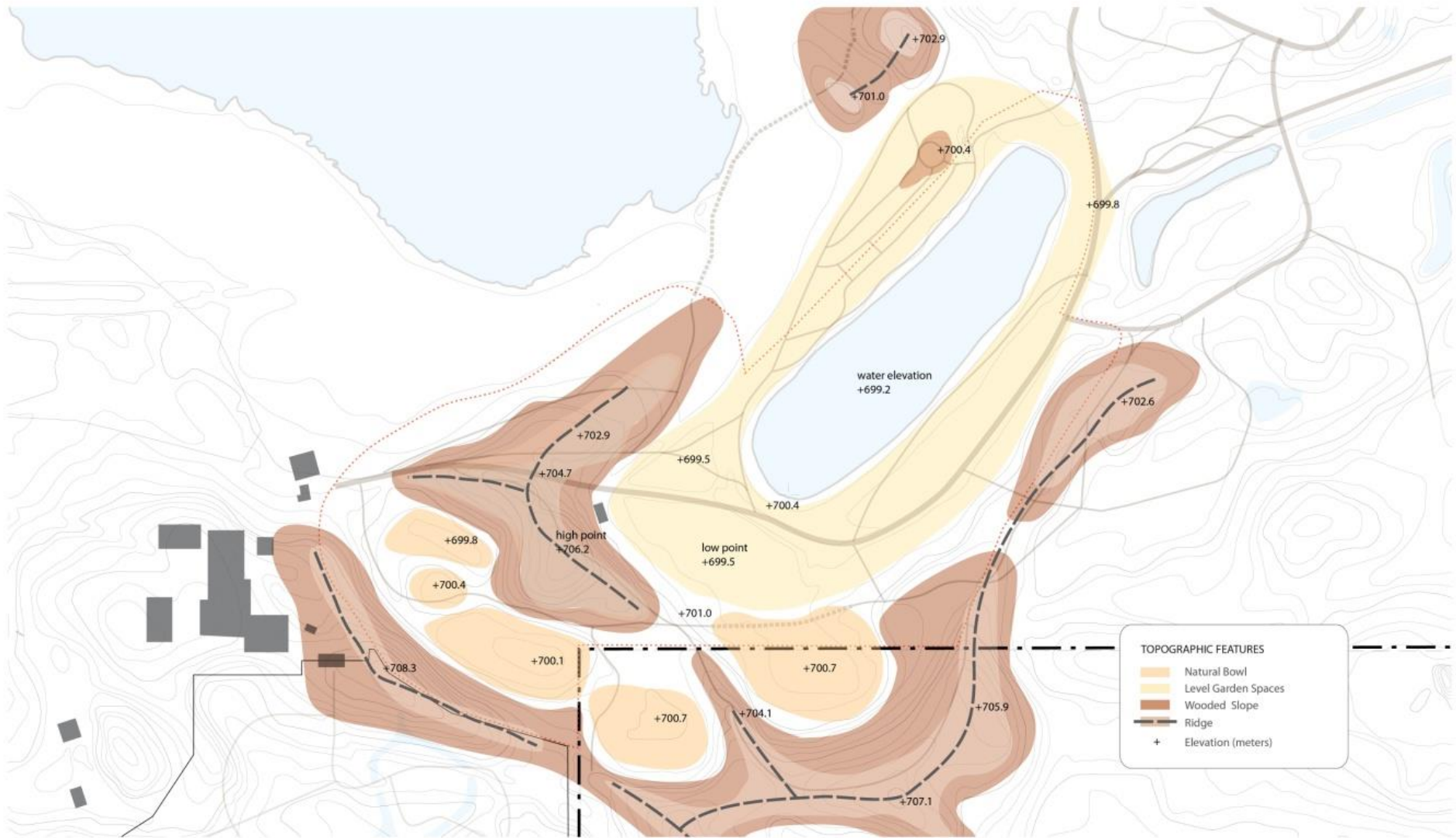
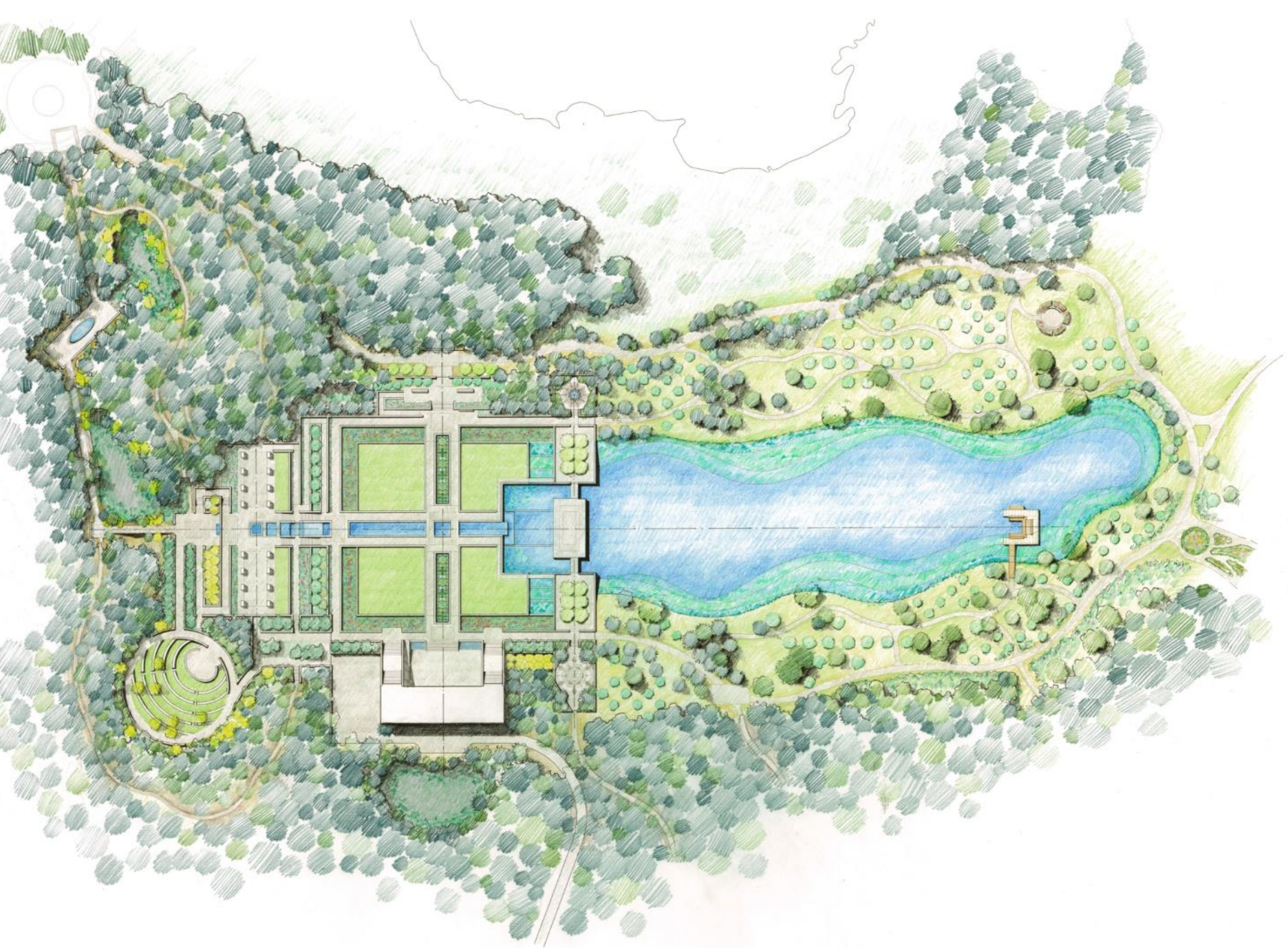


FIGURE 4: TOPOGRAPHIC FEATURES

ISLAMIC GARDEN  
at the DEVONIAN BOTANIC GARDEN  
UNIVERSITY OF ALBERTA







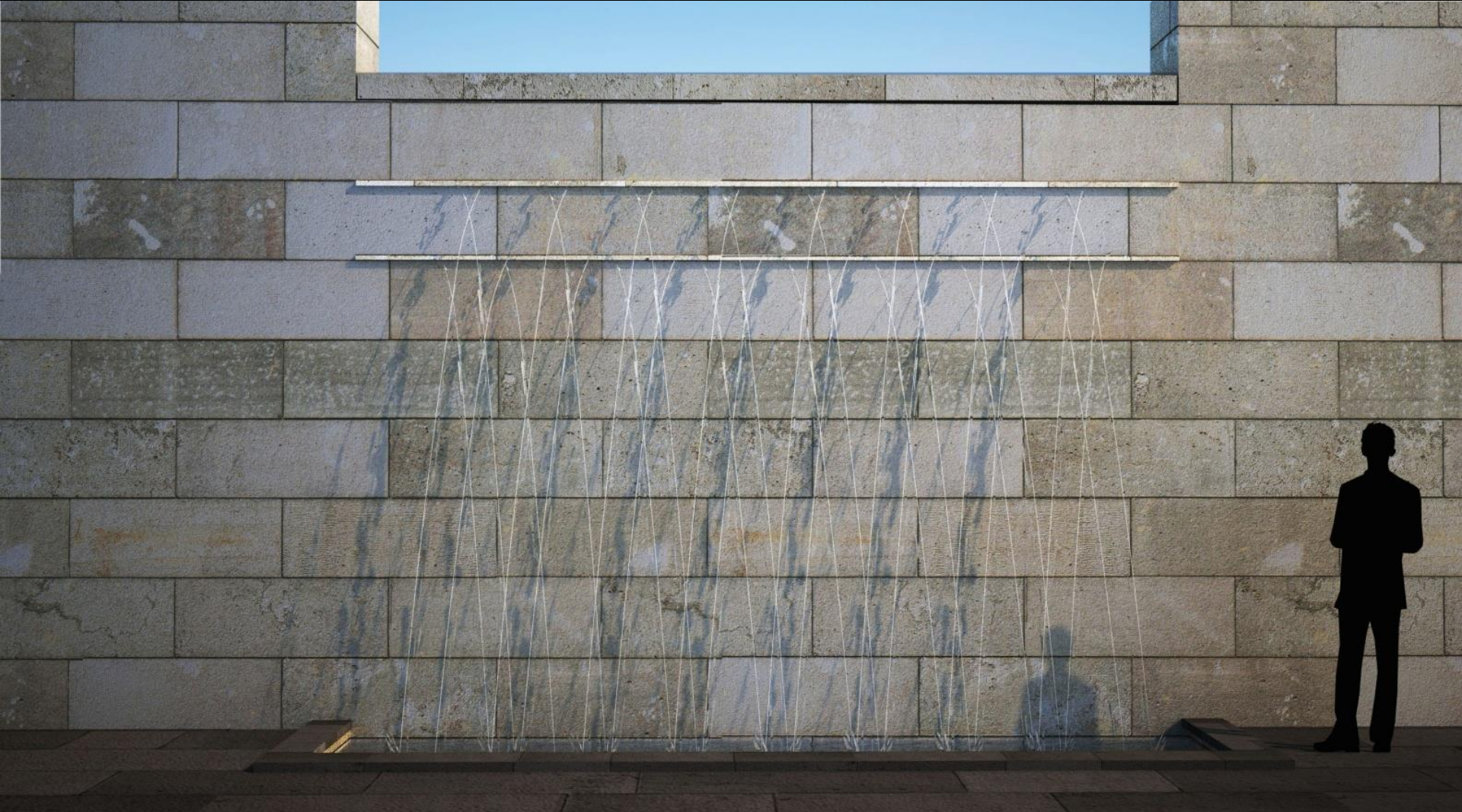
AGA KHAN GARDEN



























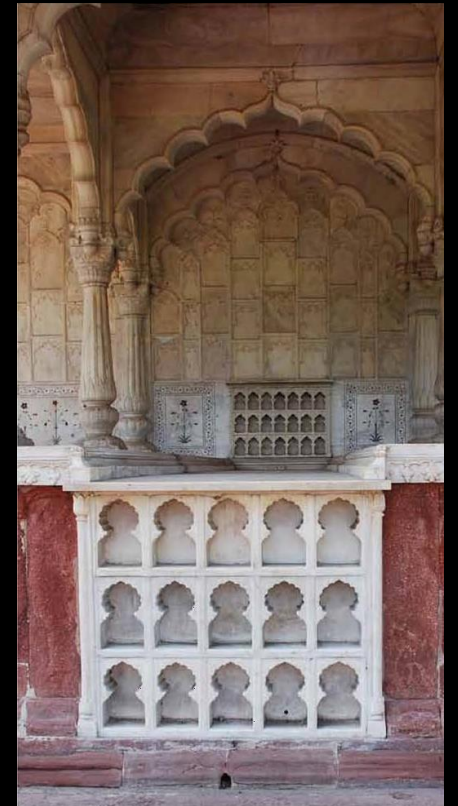




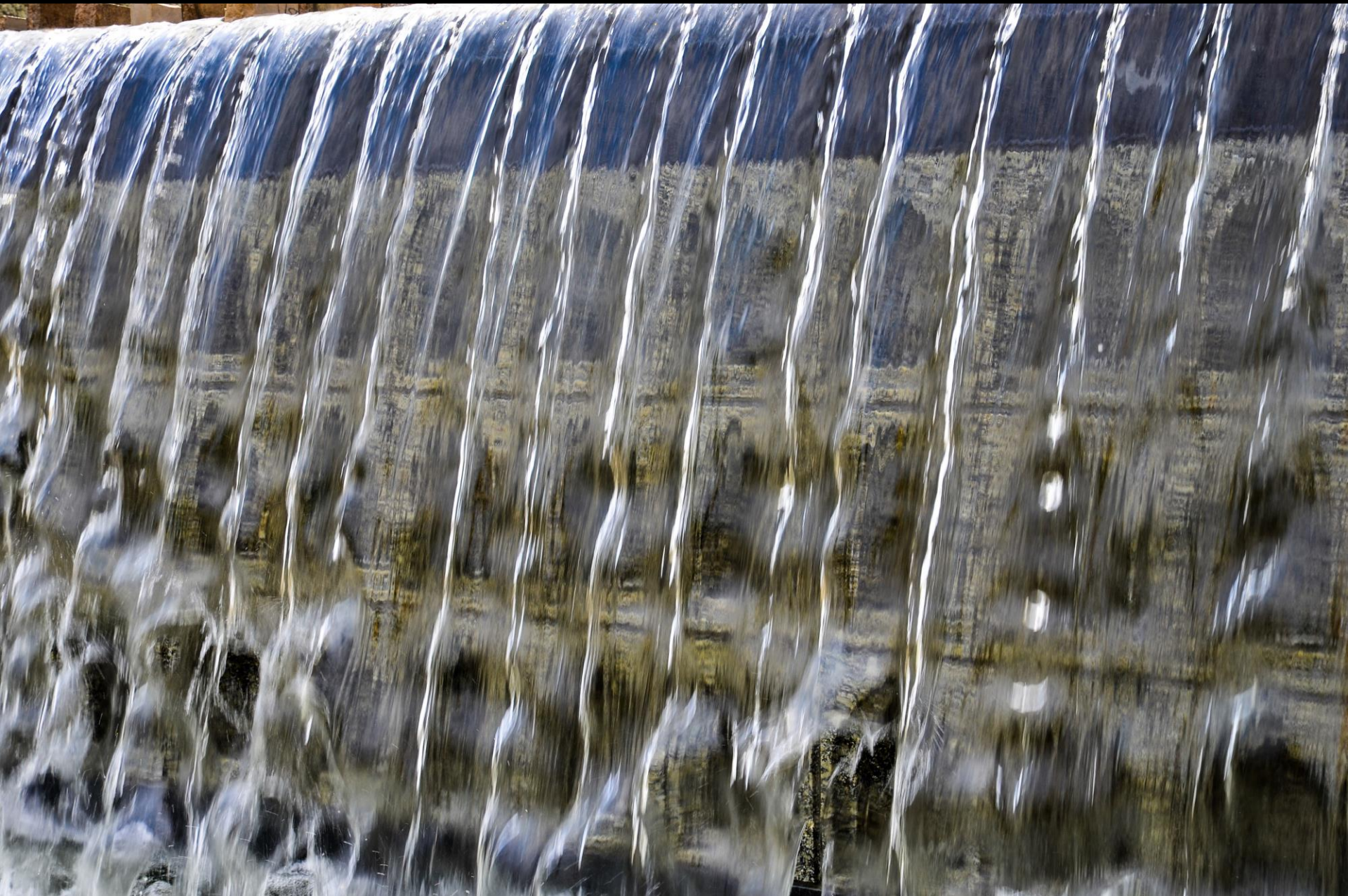






















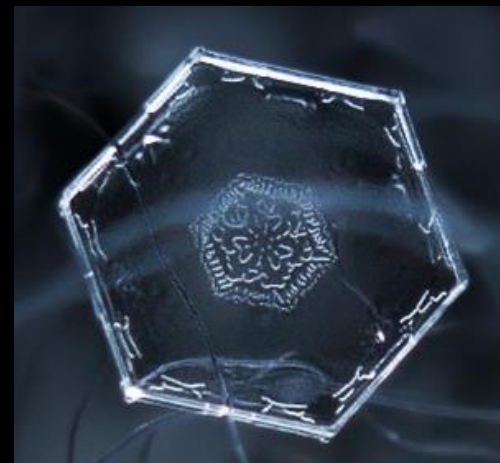
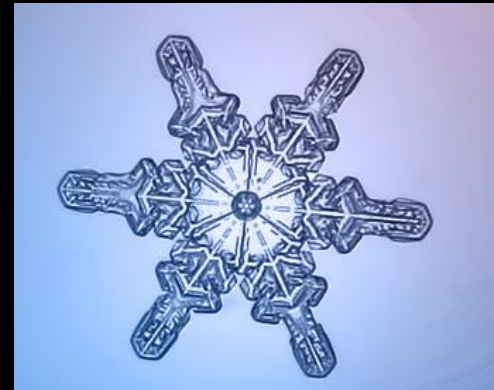
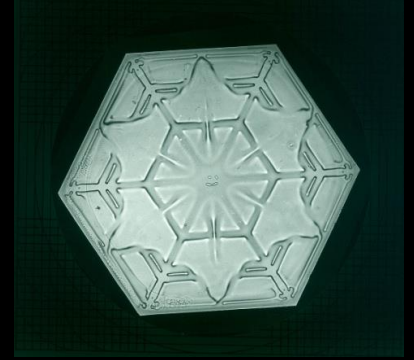
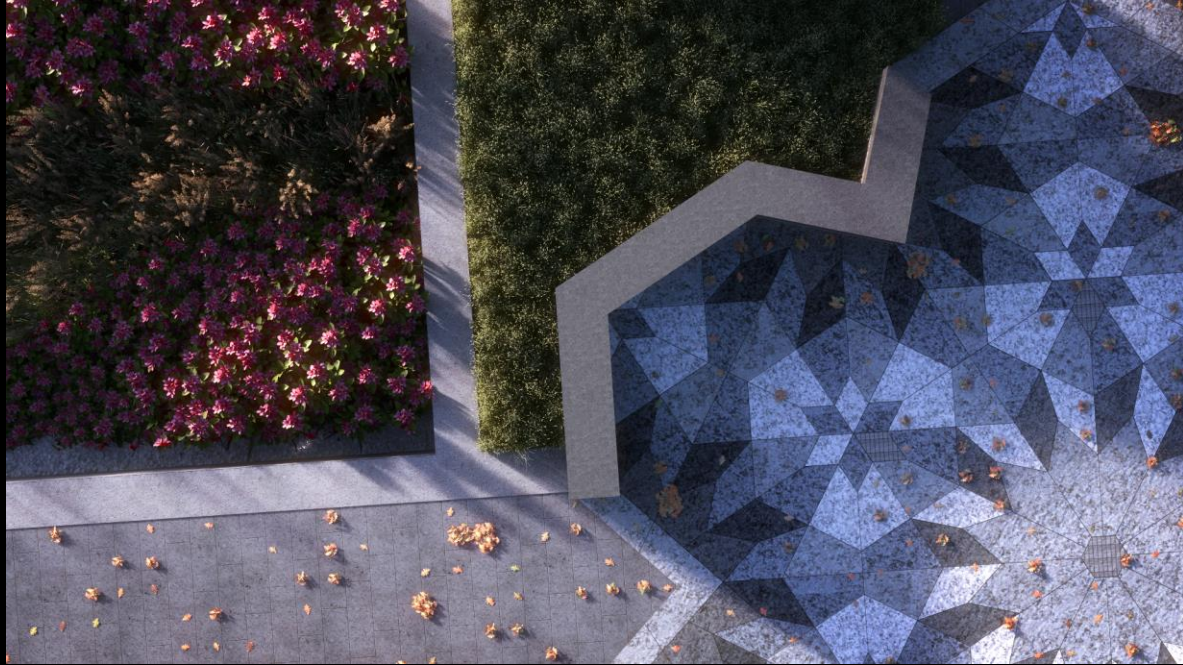


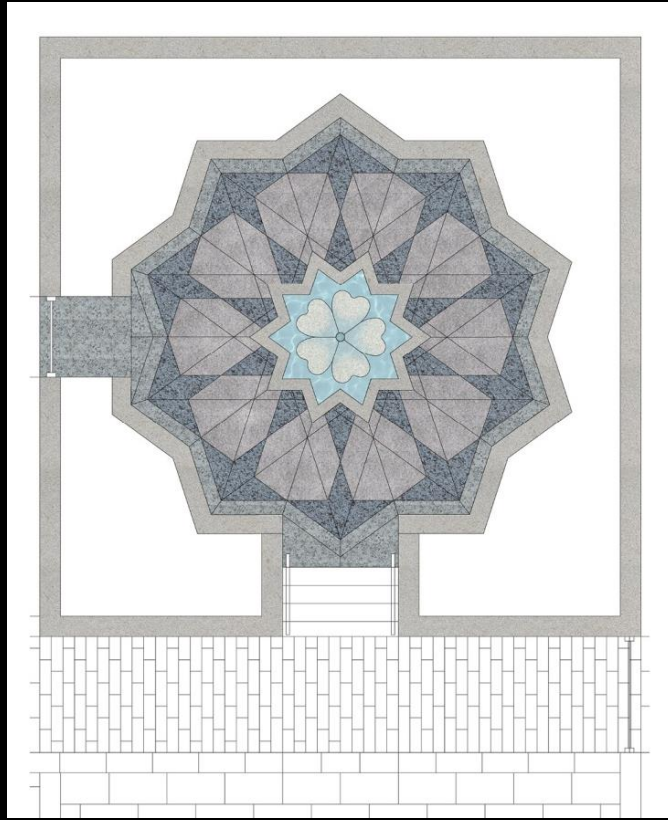








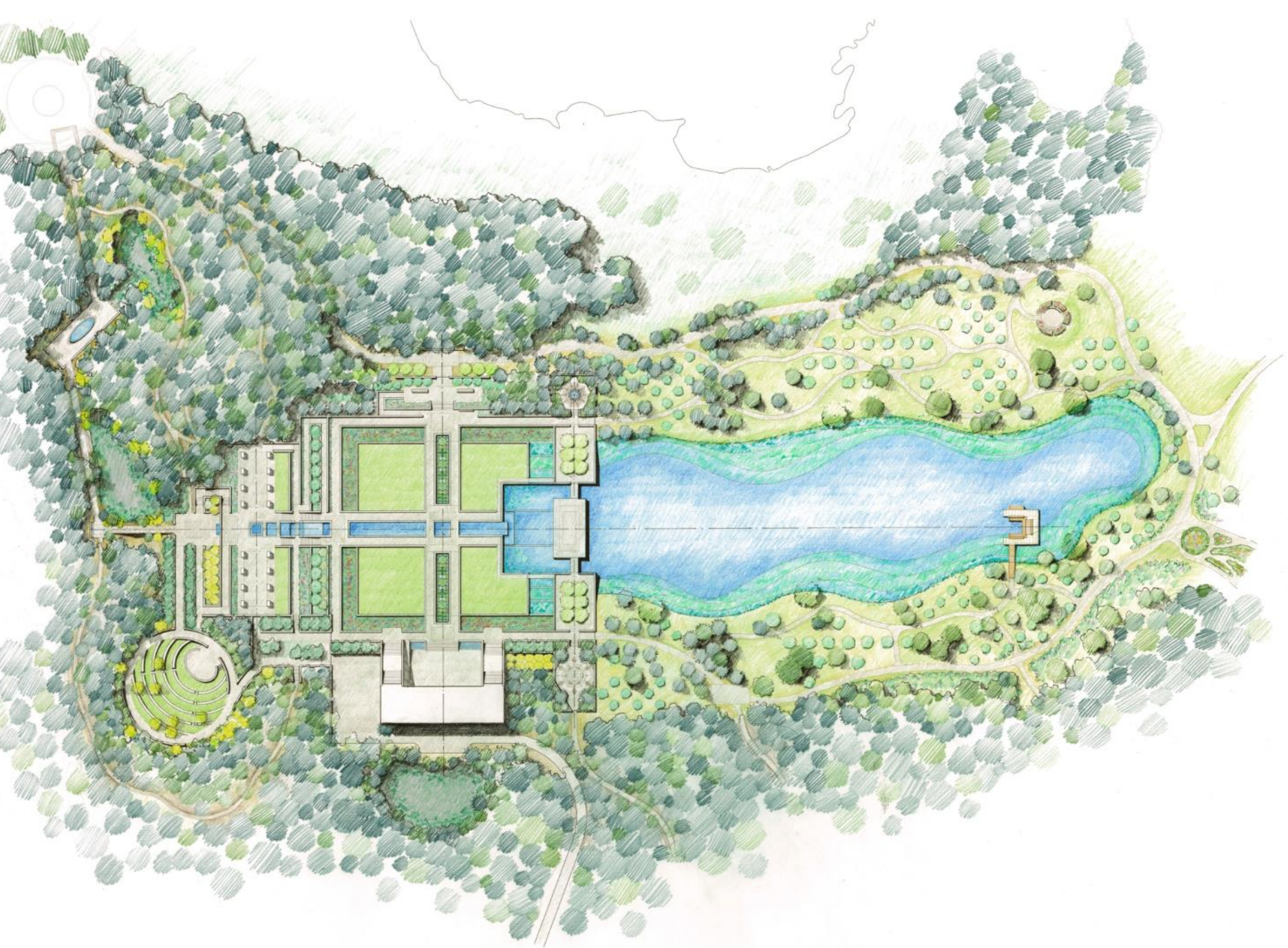












AGA KHAN GARDEN  
ALBERTA

EDMONTON, CANADA

AGA KHAN GARDEN  
ALBERTA

EDMONTON, CANADA