

Plant Records Methods and Databases



**SPRINGS
PRESERVE**
WWW.SPRINGSPRESERVE.ORG

Brandi Eide

Botanical Garden Supervisor

Why do we keep plant records?

- Care & control of collection
 - ✓ efficient usage
 - ✓ security
 - ✓ health
 - ✓ evaluate
- Preserve data
 - ✓ long-term availability of info
- Use of collection
 - ✓ education
 - ✓ interpretation
 - ✓ publication
 - ✓ research
 - ✓ conservation
 - ✓ restoration
 - ✓ display

Why do we keep plant records?

- **Know** what you have
- **Find** what you have
- **Analyze** & make decisions
- Increases value
- Monitor legal agreements & permits
- Care & control
- Facilitate use



No matter how good or extensive your data, if it is not organized & documented in an accessible way & stored appropriately it is or could become useless.



Collection Policy

- Informs & guides development, management & review of the plant holdings
- Plant records management procedures- acquisition & documentation standards to ensure core data are captured & retained
- De-accessioning & disposal
- Updated & current information
- Review of holdings

Plant Records

- Valuable asset
- Protocol
 - Clear & consistent –labeling, tracking, database & mapping are easily linked/changed
- Stay current
 - Data collection, tracking & updating are needed
- Plan for the future
 - Collections records should outlive the creators & users

Plant Records *Collections Policy*

- Protocol for tracking
- Who is responsible for each step?
- What do you accession?
 - All plants? Those with data? Wild collected?
- When do you accession?
 - After 1 yr? Seedlings? Certain container size?
- How do you track lineage?
 - Seedlings (controlled pollination?), divisions, pups, cuttings? Track back to mother plant?



Echinocereus triglochidiatus

Who is responsible?

- Critical to identify information needed, who will collect & maintain it at every step
 - Collection/acquisition
 - Health/inventory/mapping
 - Moving/removing
 - Propagation if needed & subsequent tracking
 - De-accessioning/disposal
 - Regulatory- sales, exchanges, permits, grants, tracking
- Ensure you have enough staff to follow necessary procedures and forms contain sufficient data
- Train all staff & volunteers (raking, dead)

Tracking accessions

How will you label, what does accession number convey?

- **Plan ahead.** Current accessions 7,000/yr, assume +10,000 in the future and allow enough digits.
- Plant tag include what information? What is needed for **quick decisions** like moving/pruning/propagating?
- **Training**, staff, maintenance, volunteers

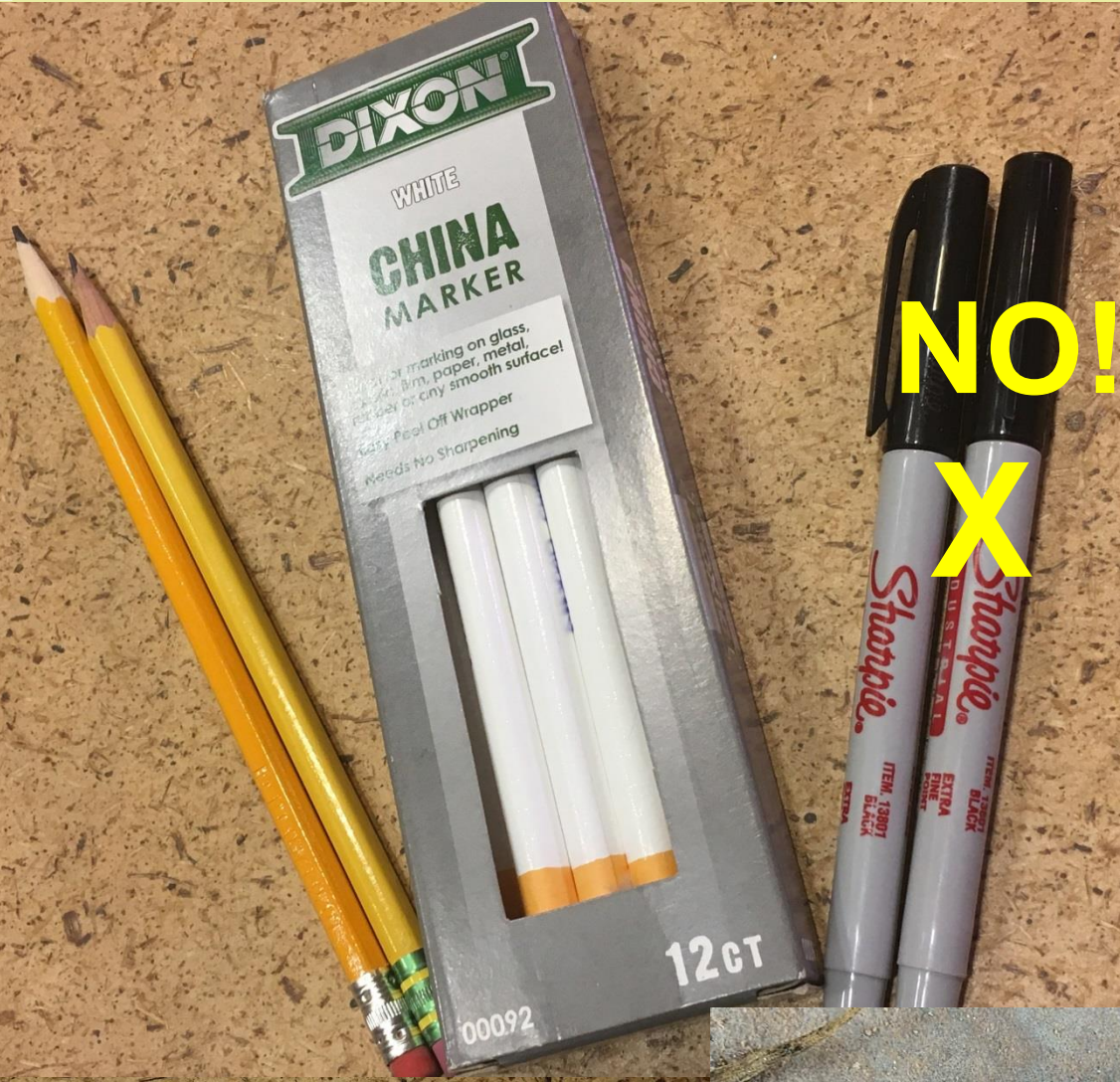
How will you physically track each plant/accession? Bed number, maps, physical tag with plant?

MOBOT



Brooklyn BG





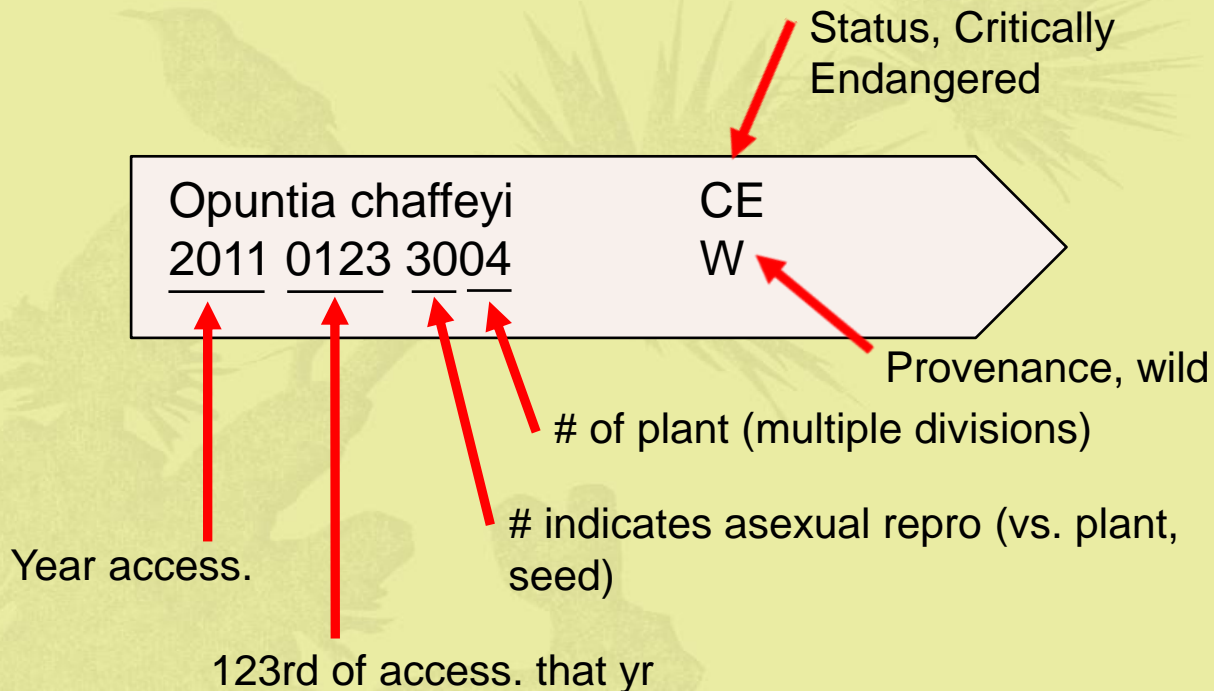
AGAVE UTAHENSIS
2018 0123 1004 W

DAT SECTINARO
SPRINGS PRESERVE
2018
GARDENER
EXTRAORDINAIRE

Accession number information

- How many digits?
- Plan for the future

- What do you want to know from the number/label alone?



- Year
- # accessioned that year
- Data -seed, plant, asexual propagated clone, herbarium specimen
- Provenance
- Family
- Critical/endangered status

San Francisco Botanical Garden



Australian National Botanic Gardens

Prop. Number series – A = ANBG, pre-1977
– B = CBG, 1977-1999
– C = CANB, from 2000

Prop. Number

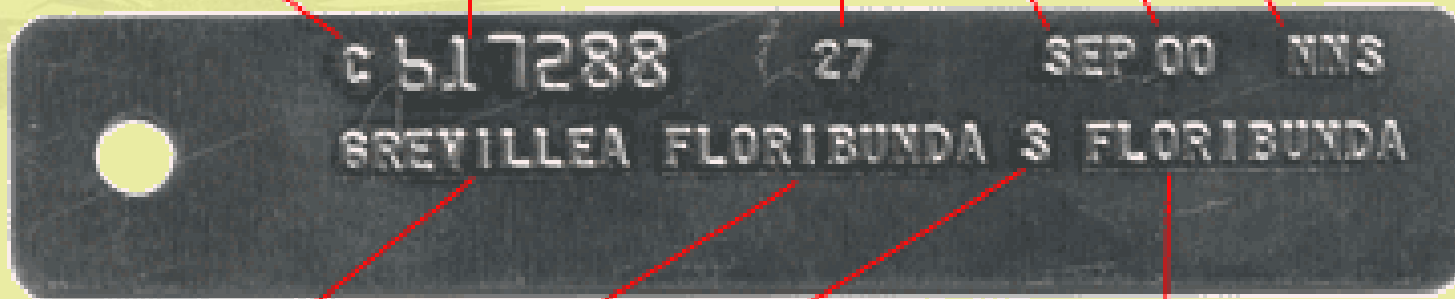
Section number of Garden bed

Month of propagation

Year of propagation

source botanical region

NNS
(NSW)



Genus

species

s = subspecies

subspecies name

Tracking genetic information

- Research
- Restoration efforts, genetic source
- Disease/pest resistance, e.g. Dutch Elm disease
- Controlled pollination
- Clonal/asexual propagation, how to track monocots and multiple generations/lineage



Considerations for records/database

- What is required/optional
- What might you want in the future
- What can your database handle



Considerations for records/database

- Data transfer
- Service, training
- Maps
- Remote access
- Public access
- Label creation
- Report creation/running
- Tasks
- Cost

Backup



AccYear	AccNoFull	TaxonNameFull	Family	OriginName	OriginRef	CollDate	Collector
2001	2001-1	Echinomastus johnsonii	Cactaceae	Springs Preserve		2001-05-30	Harrison, Russell
2002	2002-2	Opuntia polyacantha Haw.	Cactaceae	Springs Preserve		2002-08-19	
2002	2002-3	Echinomastus johnsonii	Cactaceae	Springs Preserve		2002-06-17	Harrison, Russell
2005	2005-1	Echinocactus polycephalus Engelm. & J. Bigelow	Cactaceae	Springs Preserve		2004-03-01	Harrison, Russell
2007	2007-4	Ferocactus cylindraceus	Cactaceae	Springs Preserve		2007-10-20	Harrison, Russell
2007	2007-3	Ferocactus cylindraceus	Cactaceae	Springs Preserve		2007-10-17	Harrison, Russell
2007	2007-1	Cylindropuntia ramosissima	Cactaceae	Springs Preserve		2001-10-05	Harrison, Russell
2008	2008-3	Cylindropuntia multigeniculata	Cactaceae	Barnett, Donnie		2008-09-10	Barnett, Donnie

LocalityFull	MaterialType	ProvenanceCode	Comment
USA: Nevada, Clark, Apex Generating Station	Whole plant	W	
USA: Nevada, Clark, James Hardy Gypsum Mine, Blue Diamond		W	
USA: Nevada, near Searchlight		W	salvaged during US 95 widening project
USA: Nevada, Clark, Apex Generating Station	Whole plant	W	
USA: Nevada, Clark, Cheyenne and 215 Beltway	Whole plant	W	
USA: Nevada, Clark, Cheyenne and 215 Beltway	Whole plant	W	
USA: Nevada, Clark, Cheyenne and 215 Beltway	Whole plant	W	
USA: Nevada, Clark, Blue Diamond foothills	Whole plant	W	

Introduction

BG-BASE is a PC-based database application written primarily to handle the information management needs of institutions and individuals holding living and/or preserved collections of biological material, including botanic gardens, arboreta, zoos, herbaria, museums, libraries, university campuses, horticultural societies and private collections.

The objective is to develop and share a standard design that ensures compatibility, and at the same time one that allows for fine-tuning to meet specific individual needs. The result is a powerful, well proven system that not only facilitates basic inventory control, but also enables users to fully document, label and curate their collections so that these collections, no matter how large or small, can be of the highest possible value to the research, conservation and education communities. *BG-BASE* is compatible with relevant international data standards.

Initiated in 1985 at the request of the Arnold Arboretum of Harvard University in Boston (US) and the Threatened Plants Unit (TPU) of the World Conservation Monitoring Centre (WCMC) in Cambridge (UK), it is now used around the world in over 200 [sites](#) in 25 countries. The system is regularly updated and enhanced based on user input; its two development and support centers are the [Royal Botanic Garden Edinburgh](#) (UK) and *BG-BASE*, Inc., located in Topsham, Maine (US).

BG-BASE is designed to manage information in six broad categories:

- collection management (living collections, herbarium and museum collections, seed banks, DNA repositories, etc.)
- taxonomy / nomenclature (any level from kingdom down to sub-form, cultivar, cultivar group, etc.)
- distribution (from global down to exact latitude/longitude)
- bibliography (books, journals, unpublished references, images, etc.)
- conservation (threats, conservation status, protected areas, laws and conventions, etc.)
- people management (addresses, institutional affiliations, education programs, events tracking, etc.).

Its aim is to provide a seamless interface to taxon-, specimen-, bibliographic-, image- and geographically-based information. Instead of having separate database systems for each of these kinds of data, they can be managed using a single, fully integrated system. *BG-BASE* is unique in offering this breadth and depth of information management across such a wide range of topics.

BG-BASE can be used on stand-alone machines or as part of a Local Area Network (LAN). *BG-BASE* is composed of a series of [modules](#), each of which links with the other modules using shared fields / tables and a common user interface that does as much or as little as the user requires. Within the modules information on a wide range of topics can be managed:

- living collections (including propagation and horticultural tasks)
- herbarium and other museum specimens (including loans, gifts, exchanges, label production, etc.)
- collecting notebooks (can be used in the field on a laptop or tablet)
- gene banks
- DNA sequences
- nomenclature
- taxonomy
- bibliography (published and unpublished)
- images
- gazetteers
- geographic distributions
- floristic and faunistic surveys
- protected areas
- conservation status (local, national and global; including threats, policies)
- national and international conservation laws and conventions
- institutional and individual contacts
- education programs
- events and facilities tracking
- institutional and personal calendars.

No single installation of *BG-BASE* uses all of its modules or functionality; rather, each uses a different subset of the whole. However, all users are fully compatible with one another because all share the same field definitions in a common data dictionary. In addition to the standard fields, there are 5-10 user-defined fields in each major database table that can be used to meet specific needs.



BG-BASE Collections Management Software

Price Sheet

Modules

- **LIVING COLLECTIONS module** (*includes Web publishing, Propagations and Image management*) \$ 4250
- **PRESERVED COLLECTIONS module** (*includes Web publishing and Image management*) \$ 4250
- **LIVING COLLECTIONS + PRESERVED COLLECTIONS** \$ 7250
- **CONSERVATION module** \$ 1500
- **ARCGIS CONNECTOR** (*USING SQL*) \$ 1500
- **BG-CAPTURE MOBILE** (*FOR IPAD AND ANDROID*) CONTACT US

**** All prices include one year of technical support from date of installation ****

Multi-user configuration

- **3 CONCURRENT USERS ADD:** \$ 2750
- **5 CONCURRENT USERS ADD:** \$ 3500
- **10 CONCURRENT USERS ADD:** \$ 7500

Training

On-site or off-site training is required for each new *BG-BASE* installation. Two days of training are included for two individuals at BG-BASE, Inc. at no additional charge. Travel, lodging, and meal expenses are the responsibility of the trainees. On-site training at your institution may be arranged for a maximum of four participants. The total number of days of on-site or off-site training is dependent upon the number of modules purchased. Six hours of on-line training are also included at no additional charge with every purchase.

- **TWO DAYS OFF-SITE TRAINING AT BG-BASE INC. OFFICES** (*DALLAS, TX / PORTLAND, ME*) included
- **TWO DAYS ON-SITE TRAINING AT CLIENT SITE** (*TRAVEL AND LODGING CHARGED SEPARATELY*) \$ 1850
- **THREE DAYS ON-SITE TRAINING AT CLIENT SITE** (*TRAVEL AND LODGING CHARGED SEPARATELY*) \$ 2775

Annual Support Agreements

Annual Support Agreements

Support Agreement holders receive technical support via phone, email, remote access, and our on-line discussion forum, as well as receiving first priority for upgrades, reduced rates for upgrades, and reduced rates on training courses. Annual Support costs reflect **concurrent** user access.

	<u>1-user</u>	<u>3-user</u>	<u>5-user</u>	<u>10-user</u>
• One module	\$ 875	\$ 975	\$1225	\$1725
• Two or more modules	\$ 975	\$1075	\$1325	\$1825

Additional services (customization, data conversion, re-training)

• Hourly	\$ 125/hr
• Daily	\$ 925/day

How to order

BG-BASE is available from either BG-BASE, Inc. or BG-BASE (UK) Ltd. Please contact either office to receive an exact price quote for your institution. Prices in US dollars; contact BG-BASE (UK) Ltd for pricing in pounds sterling. Last modified May 2017.

For further information

www.bg-base.com

BG-BASE, Inc.
P.O. Box 1732
Addison, TX 75001
USA
phone: +1 207 522-4333

BG-BASE (UK) Ltd.
c/o Royal Botanic Garden
Inverleith Row
Edinburgh EH3 5LR
Scotland, UK
phone: +44 131 248-2879
fax: +44 131 248-2901
mail: bg-base@bg-base.com

Also of direct interest to the small garden group, creating a prototype, *BG-BASIC*, a slimmed down and far less expensive version of BG-BASE. We hope to have this available for demonstration by this summer and expect to price it around \$1200-\$1500.

Taxonomic Summary Report

COUNT_TAXA results X

Results (press Alt-PrtScr to print)

The Arnold Arboretum
Arnold Arboretum
Taxon count from the PLANTS table
Selection criterion: WITH ALIVE = 'A'
14 December 2017

Code	Major taxon	Families	Genera	Species	Taxa	Accessions	Plants	Records
G	gymnosperm	10	32	208	581	3,217	4,426	4,426
D	dicot	87	305	1,870	3,189	7,374	11,080	11,080
M	monocot	8	21	37	39	41	48	48
	TOTAL	105	358	2,115	3,809	10,632	15,554	15,554

Print

Save

View

Graph

Close

Help

Standard Inventory Report

Arnold Arboretum - Plants in 38 as of 14 DEC 2017
 Jamaica Plain, Map 38
 Page 1 (Living plants only)

ACC NUM*QUAL	PT	NAME	LOC AND GR	C	CURRENT CHECK	# PL	CUR CK DT
1299-81*A	U	Abies homolepis var. homolepis	38-NW	G	Evidence of recent cro	1	25 Jul 2012
12435*J	W	Abies recurvata var. recurvata	38-NW	F	Leader lost, 2 lateral b	1	25 Jul 2012
626-87*B	U	Acer grosseri var. hersii	38-NE	E	2-leaderd at ca. 2m.	1	24 Jul 2012
626-87*C	U	Acer grosseri var. hersii	38-NE	A	GREEN CARD FOR R	1	22 Feb 2017
260-81*A	G	Acer palmatum 'O sakazuki'	38-NE	E		1	24 Jul 2012
1201-82*D	W	Acer triflorum	38-SW	G	3-leadered at ca. 3m.	1	3 Sep 2013
262*A	W	Aesculus glabra var. glabra	38-SW	A	Moderate deadwood; i	1	29 Aug 2013
262*B	W	Aesculus glabra var. glabra	38-SE	F	Major damage on sout	1	29 Aug 2013
389-2007*A	Z	Betula occidentalis var. occidentalis	38-SW	P	GREEN CARD FOR R	1	11 Sep 2017
389-2007*B	Z	Betula occidentalis var. occidentalis	38-SW	G	Not well established;	1	24 Jul 2012
785-94*D	G	Calycanthus chinensis	38-NW	G	Minor insect damage (1	24 Aug 2017
22868*K	U	Carya ovata	38-NW	G	Flagging on less than	1	24 Jul 2012
251-2012*A	U	Carya ovata	38-NW	G	Very minor deadwood;	1	17 Aug 2017
206-2012*A	U	Carya sp.	38-SW	A	Care	1	22 Sep 2016
207-2012*A	U	Carya sp.	38-SW	G		1	25 Jul 2012
208-2016*A	U	Carya sp.	38-SW	A		1	6 Jan 2016
4697*O	W	Cedrus libani	38-NW	F	2-leadered at ca. 10 m	1	25 Jul 2012
202-2016*A	U	Comus florida	38-SW	A		1	6 Jan 2016
205-2012*A	U	Comus florida	38-SW	G	Competing with Rhodo	1	4 Feb 2016
414-2011*A	U	Comus florida	38-NE	F	2-leadered at ca. 2m;	1	24 Jul 2012
415-2011*A	U	Comus florida	38-SW	P	GREEN CARD FOR R	1	4 Feb 2016
416-2011*A	U	Comus florida	38-SW	P	GREEN CARD FOR R	1	4 Feb 2016
417-2011*A	U	Comus florida	38-NW	F	Major anthracnose	1	24 Jul 2012
418-2011*A	U	Comus florida	38-NW	P	GREEN CARD FOR R	1	4 Feb 2016
1207-82*A	W	Comus kousa	38-SW	A		1	4 Feb 2016
1207-82*B	W	Comus kousa	38-SW	A		1	4 Feb 2016
4480*B	U	Crataegus dunbarii	38-SW	F	Split at base from soil l	1	29 Aug 2013
236-2012*MASS	U	Enkianthus campanulatus	38-NW	G	Good regeneration.	9	25 Jul 2012
24-98*A	W	Fagus crenata	38-SW	G	Excellent form; minor i	1	24 Jul 2012
24-98*B	W	Fagus crenata	38-SW	G	Excellent form; minor i	1	24 Jul 2012
383-27*A	Z	Fagus engleriana	38-NW	G	2-leadered at ca. 1m.	1	25 Jul 2012
383-27*B	Z	Fagus engleriana	38-NW	G	4-leadered at ca. 1m;	1	25 Jul 2012
7418*A	W	Fagus lucida	38-NW	F	Northern lean, competi	1	24 Aug 2017
18159*A	G	Fagus sylvatica	38-SW	G	Recent breakage of pri	1	24 Jul 2012
308-43*B	G	Fagus sylvatica 'Atropunicea'	38-SW	G	2-leadered at ca. 6m;	1	24 Jul 2012
14595*A	G	Fagus sylvatica 'Laciniata'	38-SW	G	2-leadered at ca. 4m;	1	24 Jul 2012
14597*A	G	Fagus sylvatica 'Pendula'	38-SW	E	Excellent callus wood f	1	24 Jul 2012
2420*A	Z	Fagus sylvatica 'Tortuosa'	38-SW	F	2-leadered at ca 1.5m;	1	24 Jul 2012
17867*A	Z	Fagus sylvatica 'Zlatia'	38-NW	F	Remarkable example	1	24 Aug 2017
214-75*A	G	Ilex (serrata x verticillata) 'Apollo'	38-SW	F	Major split in 1 stem;	1	20 Aug 2013
213-75*A	G	Ilex (serrata x verticillata) 'Sparkleberry'	38-SW	F	No regeneration; parti	1	3 Sep 2013
213-75*B	G	Ilex (serrata x verticillata) 'Sparkleberry'	38-SW	F	Poor regeneration; par	1	3 Sep 2013

On-line
Help for
all fields

Abelia chinensis

Name num

Distribution

Range

BRU (Biological Recording Unit)
BRU code > Biological r

Continent or region
Code > Continent or regi
ASI Asian

TNC ecoregion
Code > TNC ecoregion

Conservation status
'Old' IUCN

'New' IUCN

Global rank FWS

Help for field RANGE in table NAMES

RANGE

field name: RANGE

-

Enter the natural range of this taxon as it should appear on public display labels. For example:

 pantropical
 largely confined to the tropics
 New Caledonia
 warm Asia & Australia, E. US

NOTE: You are responsible for all capitalization and punctuation.

NOTE: Use ampersands (&) instead of "and"; separate different parts of the range with a comma.

Close
Print
To clipboard
Table links

Accession entry window

ACCESSIONS - <QBF Browse: 10 of 10> - [ACCESSIONS_ENTRY_1A]

File Edit Browse Configure Multimedia Window S/List Shortcuts Help

Record 10 of 10

Line 1 of 1 / text length: 4 (limit: 82)

HGS 28 APR 89 KDP 26 JUL 99

Accession # Rhododendron canadense

Acc date

Name num

Lineage num

Material received

Recd as

Recd how

Recd dt Recd size Recd amt Container

Recd notes Restriction

Prov type Sample

Seed source Prop hist

Source information (first value is current) (use Ctrl-N to create a blank line for a more recent source)

Source #	Source name	Source acc #	IS yr	IS item	Q>	Acc dt	Misc
1707	E. Alstrup, Halifax, N.S., Canac						

Query Wizard to retrieve data

S/List Query Wizard



Choose your query columns

Create your query by choosing fields and comparison values. (Right clicking on highlighted row will display dictionary column information.)

Available Columns

- ACC_ALIVE
- ACC_DESCRIPTION
- ACC_DT
- ACC_GERMPLASM
- ACC_GERMPLASM_ALIVE
- ACC_GERMPLASM_ALIVE_STATUS
- ACC_KEYWORD

Comparison

Less Than

Value(s)

And

Queried Columns

WITH CURRENT_CONDITION_FULL EQ "POOR"
WITH GENUS EQ "ACER"
WITH CURRENT_LOCATION_FULL EQ "NURSERY"
WITH ACC_DT LT "1 JAN 2010"

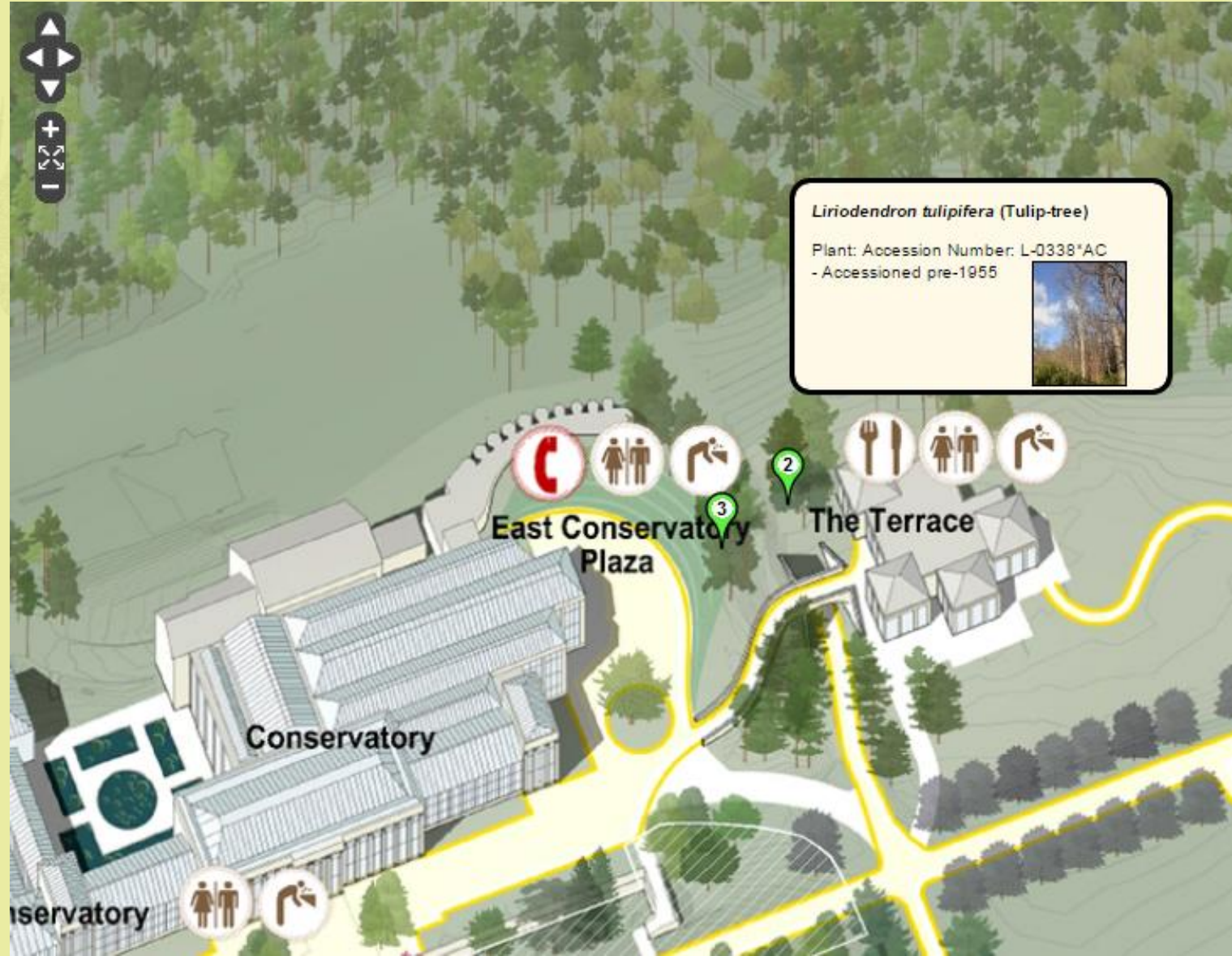


< Back

Next >

Cancel

BG-Map links directly to BG-BASE
AutoCAD or GIS import



Training

Personalized training as a supplement to the comprehensive help system that is embedded in *BG-BASE* allows us to fully understand the collection management needs of your institution and the resources that are available to you; such training also allows trainees and trainers to focus on both the conceptual and procedural aspects of managing biological collections. We recognize that each institution is different, and as such we develop a customized training regime instead of taking a 'one size fits all' approach. Our training staff have all worked in botanical gardens and arboreta and have years of teaching experience.

Retraining

Given the high turnover of staff at many institutions, the need frequently arises for new staff to be trained in how to use *BG-BASE* effectively. This can be arranged through the *BG-BASE* offices in the US or UK and can take place at one of the international development and support centers or at the user's site. Individual training may also be arranged in some circumstances on-line.

Training Seminars

Additionally, there are regular group Training Seminars offered, which can be offered at Beginner, Intermediate and Advanced levels. These 1 to 2 day sessions are designed for people just starting out as well as for people already familiar with the system who wish to extend their skills, understanding, and confidence. A significant amount of time is spent on intermediate and advanced query and reporting techniques, thereby helping participants become "super" users. Training Seminars also offer attendees the opportunity to meet colleagues from other institutions who share the same job responsibilities.

[Email](#) us for pricing and to reserve a place at one of these seminars.

Accessions

Manage collection accessions and items

 Accession: Taxon name: Family:

Locality/origin:

USA: AR, Benton Co., Devil's Eyebrow Natural Area, Nature Conservancy property, ca. 1.3 mi. e.s.e. of town of Garfield, 484 m, 36.444511° | -93.949586°

Save

Delete...

Details Items (13) Parentage Images References (10) Permit

Properties

Acc. year	no	type	2015	666	COLLECTION
-----------	----	------	------	-----	------------

Taxon name	Det. type	Philadelphus inodorus
------------	-----------	-----------------------

Determination

Det. as taxon name	Philadelphus inodorus				
Det. date	person	level	9/29/2015	?	Not determined
References	Comments				

Locality

Locality	USA: AR, Benton Co., Devil's Eyebrow Natural Area, Nature Conservancy
Habitat	Assoc. with Rhamnus caroliniana.
Aspect	Slope

Collection

Collector	Larson, R. A. (Dawes Arboretum); Brackman, B.; Augsburger, S.		
Coll. date	Coll. no	9/22/2015	TDAAR15-013
Pop. no	spec. no		
Coll. description	Beside gravel road ~.3 mi. into Devil's Eyebrow (Rob Walton) Wildlife Area		
Project	TDAAR15		

Origin

Contact	Donor type	DAWES ARBORETUM - The Dawes Arboretum	Bot. garden or Arboretum
Origin	ref.	Dawes Arboretum	
Provenance	Prop. hist.	Wild of Known Origin	Individual wild plant(s)

 Determination history

Taxon name	Det. type	Det. date	Det. person	Det. level	References	Comment
Philadelphus inodorus		9/22/2015	Larson, R. A. (Dawes Arbore...)	Not determined		

 Attributes

Name	Value
------	-------



IrisBG

Botanical Garden Collection Management



Taxon name: ~

Styphnolobium japonicum

Family: ~

Fabaceae

Save

Expire...

Names Details Parentage Images (2) References (5)

Scientific names	
▶	Styphnolobium japonicum
	Sophora japonica

Checked date	Checked by	Checked ref.
4/14/2003	Brandenburg, David	Additional information in comments.

Common names			
Type °	Name ~	Rank	Comments
▶ English	Chinese scholar-tree	1	
English	Japanese pagoda-tree	2	

Name properties

Styphnolobium japonicum (L.) Schott

Name status	Accepted name
Genus/monomial °	Styphnolobium
Species ~	Author ~ japonicum (L.) Schott
Infra-1 °	Name ~ Author ~
Infra-2 °	Name ~ Author ~
Cultivar ~	group ~
⊕ Hybrid formula	
Trade name ~	append <input type="checkbox"/>
Infra group ~	
⊖ Information	
LSID	ipni.org:names:1119529-2:1.3.2.4.1.1
Nomend. status ~	
Publication	Wiener Z. Kunst 1830(3): 844. 1830
Description (original)	
Distribution (original)	
Name source ~	NLds (Name Listed, authors disagree)
Comments	
Reg. init.	date gap 7/16/2013

- ← → ▢
- Collections
 - Accessions
 - Item management
 - Localities
 - Projects
 - Inbox
- Taxonomy
 - Taxa
 - Taxonomic groups
- Reports
 - Reports
 - Maps
 - Labels
- Events
 - Tasks
 - Inspections
 - Trails
 - Fundings
 - Exchanges
- Management
 - Institutions
 - Collections
 - Locations
 - Assets
 - Contacts
 - Personnel
 - Library
 - Permits
- Store
- Authorization
- Definitions
- Maintenance

Accessions

Manage collection accessions and items

Accession: Taxon name: Family:

Locality/origin:

Save
Delete...

Details **Items (13)** Parentage Images References (10) Permit

Item no. °	Type °	Location °	Loc. ref. °	Status °	Date °	No. sp. °	...
1	Living	BD14		Planted	10/25/2017	1	
1	Living	CFE2		NUR: Inventoried	8/9/2017	1	
1	Living	CFE2		NUR: Inventoried	9/8/2016	1	
1	Living	COLDSTRAT		NUR: Propagated	3/7/2016	27	
1	Living	COLDSTRAT		NUR: Preparing propagation	10/6/2015	pkg	
2	Living	BD14		Planted	10/25/2017	1	
3	Living	BD14		Planted	10/25/2017	1	
4	Living	CFE2		NUR: Inventoried	11/22/2017	1	
5	Living	CFE2		NUR: Inventoried	11/22/2017	1	
6	Living	PSH		NUR: Sold at Plant Sale	10/27/2017	1	
7	Living	PSH2		NUR: Plant Sale	11/22/2017	5	
20	Living	CFE1		NUR: Discarded	6/2/2017	6	
21	Living	PSH		NUR: Sold at Plant Sale	10/27/2017	1	
22	Living	PSH		NUR: Sold at Plant Sale	10/27/2017	1	
31	Living	CFW2		NUR: Discarded	5/30/2017	6	
98	Living	COOLER		NUR: Discarded	1/9/2017		
9999	Herbarium	HERBARIUM		Collected	9/22/2015		

Item properties

Item no. Current **D2015-0666.001**

Type

References

Cons. no. ° External ref. °
 Storage no. ° Item ref. °

Location

Location code °
 Location name °
 Location ref. ° subref. °
 Coord. lat. |x long. |y
 Coord. precision Altitude

Status

Status °
 Condition ° No. specimens
 Date ° Person °

Label type-1 ° no. status °
 Label type-2 ° no. status °

Measurements (meter)

Material

Restriction °
 Comments °

Reg. init. date gap

Accessions
 Item management
 Localities
 Projects
 Inbox

Taxa
 Taxonomic groups

Reports
 Maps
 Labels

Tasks
 Inspections
 Trails
 Fundings
 Exchanges

Institutions
 Collections
 Locations
 Assets
 Contacts
 Personnel
 Library
 Permits

Accessions

Manage collection accessions and items

Accession: Taxon name: Family:
 Locality/origin:

Save

Delete...

Details Items (6) Parentage (24) **Images (10)** References (5)

Max. resolution: MegaPix 3

Image 2 Rank: 1 Image 3 Rank: 2 Image 4 Rank: 10



1224 x 1632 px, (2 MP, 249 KB)



Rank	Date	1	6/15/2017
Item	D1941-0044.003		
Origin	Dawes Arboretum		
Provider	Ecker, Michael E.		
File name	pseudocamellia23.jpg		
Web image			
Image lib. Id			
Properties	Image:		
Comments			
Reg. init.	date	mee	6/20/2017

Accessions

Manage collection accessions and items

 Accession: Taxon name: Family:

Locality/origin:

USA: AR, Benton Co., Devil's Eyebrow Natural Area, Nature Conservancy property, ca. 1.3 mi. e.s.e. of town of Garfield, 484 m, 36.444511° | -93.949586°

Save

Delete...

 Details Items (13) Parentage Images **References (10) Permit**

Library items		Pages	Comments	Item	Type
Author(s)	Year	Title			

Permits		Status	Status comment	Permit	Permit types
<input checked="" type="checkbox"/>	<input type="checkbox"/>	Permit available	Permit Completed	2: USA • Arkansas Natural Heritage Commission • 2015-09-0...	COLLPERM

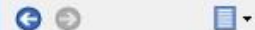
Events								
Event kind	Text	Item	Status	Status date	Priority	Start date	End date	
Exchange	Exchange 1759: BAKER ARBORETUM - Baker Arboretum of Western Ke...	D2015-0666.001	Completed	6/25/2016	0: None			
Exchange	Exchange 1765: CHICAGO BOTANIC GARDEN - Chicago Botanic Garden	D2015-0666.030	Completed	11/15/2016	0: None			
Exchange	Exchange 1763: JOHNSTON, JACK - Johnston, Jack	D2015-0666.030	Completed	10/13/2016	0: None			
Task	Task 153: Fall 2017 Planting List	D2015-0666.001	Completed	10/27/2017	3: High			
Task	Task 152: 2017/2018 Planting List	D2015-0666.001	Completed	10/27/2017	3: High	8/7/2017		
Task	Task 153: Fall 2017 Planting List	D2015-0666.002	Completed	10/27/2017	3: High			
Task	Task 152: 2017/2018 Planting List	D2015-0666.002	Completed	10/27/2017	3: High	8/7/2017		
Task	Task 153: Fall 2017 Planting List	D2015-0666.003	Completed	10/27/2017	3: High			
Task	Task 152: 2017/2018 Planting List	D2015-0666.003	Completed	10/27/2017	3: High	8/7/2017		

Drag marker to alter the coordinates. Then press the Select and close button.



IrisBG is delivered with more than 30 base maps from different internet map providers ready for use. With the supplied base maps you can switch between display styles, including traditional map display, terrain, satellite, hybrid etc.

ref. ~			
ref. ~	CB15		
	RAR: CB15		
ref. ~	CB15.014		
ily	379,171.37	4,425,727.06	
ude			306.42
	Inventoried		
ens	Good	1	
	9/27/2016	Payton, Gregory	
atus°	Ab	OK	
atus°	P,NE	OK	
	No restrictions		
gap		9/27/2016	



Localities
Projects
Inbox

Taxonomy

Taxa
Taxonomic groups

Reports

Reports
Maps
Labels

Events

Tasks
Inspections
Trails
Fundings
Exchanges

Management

Institutions
Collections
Locations
Assets
Contacts
Personnel
Library
Permits

Store

Authorization

Definitions

Maintenance

System tasks
Configurations
Import data

Import data

Perform import of data from external sources

Job status: ° Source type: ° Source name: ~ Reg. person: ° Reg. date: °

Accept Delete

Import results

Job status	No	Source type	Source name	Information	Reg. person	Reg. date
Accepted	146	XlsxFile	newherbs.xlsx		gap	07.11.2013 15:38:35

Localities *	Accessions *	Items *	Taxon names *	Tax. groups *	Taxa *												
Action	Status	Row	Genus/mon.	Species	Author	Infratype-1	Infraname-1	Author-1	Infratype-2	Infraname-2	Author-2	Infratype-3	Infraname-3	Author-3	Cultivar	Cultivar group	Trade name
+ None	None	152	Viburnum	molle													
+ None	None	153	Phelloden...	amurense	Rupr.												
+ None	None	156	Prunus	laurocerasus	L.												
+ None	None	157	Ligustrum	× vicaryi													
+ None	None	158	Kyllinga	pumila													
+ None	None	160	Ptelea	trifoliata	L.												
+ None	None	162	Fraxinus	quadrangulata	Michx.												
+ None	None	163	Euonymus	americana	L.												
+ None	None	165	Calocedrus	decurrens	(Torr.) Florin												
+ None	None	166	Bignonia	capreolata													
+ None	None	167	Hypericum	hypericoides													
+ None	None	168	Quercus	falcata													
+ None	None	169	Lyonia	ligustrina	(L.) DC.												
+ None	None	170	Magnolia	macrophylla	Michx.												
+ None	None	172	Pyrularia	pubera													
+ None	None	173	Stewartia	ovata	(Cav.) Weath.												
+ None	None	175	Vaccinium	stamineum													
+ None	None	176	Vaccinium	arboreum													
+ None	None	178	Pachysandra	procumbens													
+ None	None	179	Morus	rubra	L.												
+ None	None	184	Passiflora	incarnata													
+ None	None	185	Cladrastis	kentukea	(<Dum. -Cours...												



- ← → []
- Collections
- Accessions
- Item management
- Localities
- Projects
- Inbox
- Taxonomy
- Taxa
- Taxonomic groups
- Reports
- Reports
- Maps
- Labels
- Events
- Tasks
- Inspections
- Trails
- Fundings
- Exchanges
- Management
- Institutions
- Collections
- Locations
- Assets
- Contacts
- Personnel
- Library
- Permits
- Store
- Authorization
- Definitions
- Maintenance

Reports

Create reports and print, view or export to file

Code	Name
+ 01	Accession objects
- 02	Accession items
ACERPCN	Plant Collection Network: Acer data
AllPlts	All Plants
allpropdat	Propagations
INVBOOK	Inventory Book
INVLIST	Inventory List
Item02	All items data
ItemHist01	Items history
ItemImp01	Items import - new accessions
ItemImp02	Items import - new items
ItemProp01	Propagations
LabelData	Label data
Planting	Planting Sheet
PLANTSALE	Plant Sale List
PLTLIST	Planting List
REMOVALS	Removal list
+ 03	Taxa
+ 04	Events
+ 05	Management
+ 06	Statistics
+ 10	Store
+ 99	Miscellaneous

Plant Collection Network: Acer data

Export all data for accession items

Saved filters: ACERPCN*1 : PCN Maple inventory

Caption	Use	Operator	Value	Sort#	Sort order
Item					
I Item type					
Item status	<input type="checkbox"/>	Equal			
Label type-1	<input type="checkbox"/>	Equal			
Label type-2	<input type="checkbox"/>	Equal			
Prep. type	<input type="checkbox"/>	Equal			
Prep. treatment	<input type="checkbox"/>	Equal			
Storage container	<input type="checkbox"/>	Equal			
Storage medium	<input type="checkbox"/>	Equal			
Item location code	<input type="checkbox"/>	Starts with			Ascending
Item location name	<input type="checkbox"/>	Starts with			Ascending
Item location ref.	<input type="checkbox"/>	Starts with			Ascending
Item location map ref.	<input type="checkbox"/>	Starts with			Ascending
Item location active	<input type="checkbox"/>	Equal			
Item location type	<input type="checkbox"/>	Equal			
Item status type	<input checked="" type="checkbox"/>	Equal	Existing	0	Ascending
Item status date	<input type="checkbox"/>	Greater or equal		0	Ascending
Condition	<input type="checkbox"/>	Equal			
Item no	<input type="checkbox"/>	Equal		0	Ascending
Cons. no	<input type="checkbox"/>	Equal		0	Ascending
Label status-1	<input type="checkbox"/>	Equal			
Label status-2	<input type="checkbox"/>	Equal			
Image count	<input type="checkbox"/>	Greater or equal			
Usage restriction	<input type="checkbox"/>	Equal		0	Ascending
Publish restriction	<input type="checkbox"/>	Equal		0	Ascending
Accession					

Living, Herbarium, Bonsai

- Living
- Herbarium
- In Situ Pop.
- Bonsai
- DNA Sample

OK Cancel

- View...
- Print...
- Export...

Accessions
Item management
Localities
Projects
Inbox

Taxa
Taxonomic groups

Reports
Maps
Labels

Tasks
Inspections
Trails
Fundings
Exchanges

Institutions
Collections
Locations
Assets
Contacts
Personnel
Library
Permits

Tasks

Manage tasks

Task										Save
No°	Status°	date~	118	● Open	7/29/2016	Date start~	end~			Delete...
Name~		Spring 2017 Planting List				Contact°				
Type°	Planting List				Exp. cost	Act. cost				
Description						Comments				
Priority°	Owner°	3: High		Payton, Gregory	Reg. init.	date	gap	7/29/2016		

Entry kind° Item

Code/Name°	Info-1	Info-2	Comments	Image	Status	Status date	Sort
* Click here to add a new row							
D2016-0730.001	Cladrastis kentukea 'White Rain'	NURSERY•CFE•CFE1•	NEN		● Completed	4/28/2017	72
D2013-0247.005	Clethra barbinervis	NURSERY•LATH•	PKW		● Completed	5/4/2017	51
D2013-0247.006	Clethra barbinervis	NURSERY•LATH•	PKW		● Completed	5/4/2017	52
D2015-0066.002	Cornus × rutgersensis 'KF111-1' Hy...	NURSERY•CFE•CFE2•	BGC		● Completed	5/2/2017	54
D2015-0066.001	Cornus × rutgersensis 'KF111-1' Hy...	NURSERY•CFE•CFE2•	BGC		● Completed	5/2/2017	55
D2013-0012.001	Cornus controversa 'Variegata'	NURSERY•CFE•CFE1•	NEN		● Completed	5/15/2017	14
D2014-0099.001	Cornus florida 'Kay's Appalachian Mist'	NURSERY•FIELD•FBW•FBW1•	BGC		● Completed	5/2/2017	67
D2013-0737.001	Cornus kousa 'Madison' Crown Jewel™	NURSERY•CFE•CFE1•	EDU?		● Completed	10/25/2017	56
D2015-0786.003	Cornus kousa 'Rutpink' Scarlet Fire™	NURSERY•CFE•CFE2•	BGC		● Completed	5/2/2017	17
D2013-0733.001	Cornus kousa 'Silver Cup'	NURSERY•CFE•CFE1•	EDU?		● Completed	10/25/2017	41
D2014-0004.001	Cornus kousa 'Tsukuba no mine'	NURSERY•CFE•CFE1•	JPG		● Completed	5/4/2017	19
D2011-0564.007	Cornus kousa var. chinensis	NURSERY•LATH•	UJC		● Completed	5/24/2017	49
D2011-0557.002	Cornus kousa var. chinensis	NURSERY•LATH•	UJC		● Completed	5/24/2017	50
D2011-0557.001	Cornus kousa var. chinensis	NURSERY•CFE•CFE1•	UJC		● Completed	5/24/2017	57
D1993-0405.001	Cornus sericea 'Silver and Gold'	EDU•AP14•	NEN		● Completed	4/13/2017	102
D2015-0336.002	Cornus wilsoniana	NURSERY•LATH•	HOL		● Completed	4/27/2017	53
D2014-0066.001	Corylus avellana 'Santiam'	NURSERY•CFE•CFE1•	OAK		● Completed	10/25/2017	83
D2014-0066.002	Corylus avellana 'Santiam'	NURSERY•CFE•CFE1•	OAK		● Completed	10/25/2017	84
D2014-0069.003	Corylus avellana 'Uebov'	NURSERY•CFE•CFE1•	OAK		● Completed	10/25/2017	82
D2017-0319.001	Cupressus nootkatensis 'Glauca Pen...	CON•	CON		● Completed	4/28/2017	112

40 / 140

Region

North America

Pricelist for customers in North America

12/3/2017 - All prices are in USD

Concurrent users 1

Number of gardens 1

Free 60 day trial version to test

IrisBG

Licensed for one concurrent user

Modules	Price	Annual Support and Maintenance
<input checked="" type="checkbox"/> Standard Package	2 420.00	480.00
<input type="checkbox"/> Mapping	770.00	150.00
<input type="checkbox"/> Preserved Material	300.00	60.00
<input type="checkbox"/> Data Import	300.00	60.00
<input type="checkbox"/> Store Management	450.00	90.00
<input type="checkbox"/> Index Seminum (Website)	520.00	100.00
<input type="checkbox"/> Garden Explorer (Website)	910.00	180.00
<input type="checkbox"/> Full Suite	4 540.00	1 120.00
<input type="checkbox"/> Multilingual Data Entry	300.00	60.00
<input type="checkbox"/> IrisBG Mobile	570.00	110.00
Sub-total (Software licences)	\$ 2 420.00	\$ 480.00

Services	Setup fee	Annual fee
<input type="checkbox"/> Data Migration	Price on application	
<input type="checkbox"/> Cloud Database	450.00	430.00
<input type="checkbox"/> IrisBG Map Hosting Service	580.00	430.00
Garden Explorer Website		
<input type="checkbox"/> Configuration and Styling	1 260.00	
<input type="checkbox"/> Hosting		580.00
Index Seminum Website		
<input type="checkbox"/> Configuration and Styling	280.00	
<input type="checkbox"/> Hosting		290.00
Sub-total (Services)	\$ 0.00	\$ 0.00

Sum purchase \$ 2 420.00
 Sum 1st year support/fee \$ 480.00
Total \$ 2 900.00

Request Quote Place Order Print Bookmark

Data migration is usually required, and the cost will vary depending on the database platform, complexity and data quality. Read more about our [data migration service](#).

Region

North America

Pricelist for customers in North America

12/3/2017 - All prices are in USD

Concurrent users 3

Number of gardens 1

IrisBG

Licensed for 3 concurrent users

Modules	Price	Annual Support and Maintenance
<input checked="" type="checkbox"/> Standard Package	4 640.00	930.00
<input checked="" type="checkbox"/> Mapping	1 480.00	300.00
<input type="checkbox"/> Preserved Material	580.00	120.00
<input checked="" type="checkbox"/> Data Import	580.00	120.00
<input type="checkbox"/> Store Management	870.00	170.00
<input type="checkbox"/> Index Seminum (Website)	990.00	200.00
<input type="checkbox"/> Garden Explorer (Website)	1 750.00	350.00
<input type="checkbox"/> Full Suite	8 710.00	2 190.00
<input type="checkbox"/> Multilingual Data Entry	580.00	120.00
<input type="checkbox"/> IrisBG Mobile	570.00	110.00
Sub-total (Software licences)	\$ 6 700.00	\$ 1 350.00

Services	Setup fee	Annual fee
<input type="checkbox"/> Data Migration	Price on application	
<input type="checkbox"/> Cloud Database	450.00	430.00
<input checked="" type="checkbox"/> IrisBG Map Hosting Service	580.00	430.00
Garden Explorer Website		
<input type="checkbox"/> Configuration and Styling	1 260.00	
<input type="checkbox"/> Hosting		580.00
Index Seminum Website		
<input type="checkbox"/> Configuration and Styling	280.00	
<input type="checkbox"/> Hosting		290.00
Sub-total (Services)	\$ 580.00	\$ 430.00

Sum purchase \$ 7 280.00
 Sum 1st year support/fee \$ 1 780.00
Total \$ 9 060.00

Request Quote Place Order Print Bookmark

Data migration is usually required, and the cost will vary depending on the database platform, complexity and data quality. Read more about our [data migration service](#).

IrisBG Question & Answer Webinar

by [Havard](#)

Event Details

This event is running from 2 February 2017 until 4 June 2020. It is next occurring on December 7, 2017

- **Categories:** [Webinar](#)
- **Upcoming Dates:**
 - [December 7, 2017](#)
 - [January 4, 2018](#)
 - [February 1, 2018](#)
 - [March 1, 2018](#)
 - [April 5, 2018](#)

[Show More](#)

This webinar, scheduled to last 50 minutes, is a chance for you to ask questions and listen in on general discussions on using IrisBG.

If you already have questions or ideas about topics you would like us to cover during the sessions, please send them to us directly.

When?

Our webinar will be held the first Thursday of the month at 3 pm **Western European Time / 16:00 Central European time.**

OR

- **North America** : Eastern Standard Time 10:00
- **Indochina Time** : 22:00

How to join?

To sign up, just send and email to QAwebinar2017@irisbg.com.

What is a webinar?



About the IrisBG blog

Welcome to the IrisBG Blog. We will write about topics related to software and its use in botanical gardens. Please send in your comments and questions, and we will respond as soon as we can. Thank you, The IrisBG Team

Upcoming Events

[IrisBG Question & Answer Webinar on December 7, 2017](#)

[IrisBG Question & Answer Webinar on January 4, 2018](#)

[IrisBG Question & Answer Webinar on February 1, 2018](#)

[IrisBG Question & Answer Webinar on March 1, 2018](#)

[IrisBG Question & Answer Webinar on April 5, 2018](#)

[IrisBG Question & Answer Webinar on May 3, 2018](#)

[IrisBG Question & Answer Webinar on June 7, 2018](#)

Recent Posts

[Back from 2017 APGA in Canada + 6GBGC in Switzerland](#)

[UK and European User Conference – Recordings, Slides and Summary](#)

[Upcoming IrisBG Conference, Meetings, Workshops and Webinars](#)

Other Articles

[Examples of implementing IrisBG](#)

[Getting Started Guide for New Users](#)

[Getting Started with the IrisBG 60 Day Trial](#)

[Installation environment for IrisBG](#)

[IrisBG Cloud Database Service](#)

[Using IrisBG for multiple gardens \(collections\)](#)





IrisBG video tutorials

Expand any panel below and click to view a video tutorial.

Some of the tutorials will require Adobe Flash. If your browser does not support Adobe Flash, a selection of our video tutorials are also available on the [IrisBG Youtube channel](#)

[\[Expand All\]](#)

 **Introduction**



 **Intermediate**



 **Advanced**



 **Recorded Training**



Cypripedium calceolus (Photo: Ø. H. Rustan)



Cypripedium calceolus (Photo: Ø. H. Rustan)

Introduction



Getting Started



Search and Update + Reports

Updating Accessions



Excerpt from Getting started

Using Web Search



Including IPNI validation

Intermediate



Using Maps



Local and global maps

Item Management



Bulk updates + producing labels

12 Tips to be more productive



Inspections



Inspections of long lived plants

Tasks and Inventories



Create and manage lists of Accessions, Taxa, Locations, etc.

Using Custom Attributes



Adding your own data fields to IrisBG

Mobile Synchronizer



Synhronize data with IrisBG Mobile

Advanced

Managing your Taxa



Advanced Reporting



Man...



Data Import



Importing taxa, accessions, etc.

Designing plant labels



Using MS Word + other labeling software Try out

Add a...



Recorded Training

IrisBG Training, 4 x 90 minute sessions covering Introduction, Interme... Topics, March 2017

Main data model + Terminology

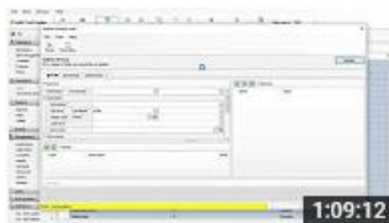




IrisBG

- Home
- Videos
- Playlists
- Channels
- Discussion
- About

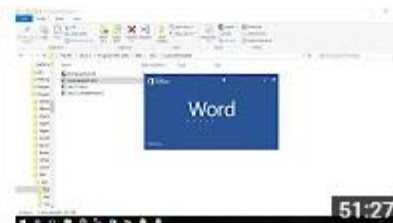
Uploads



IrisBG Q&A Webinar 2017-11-02
7 views • 2 weeks ago



IrisBG Q&A Webinar 2017-10-06
(Topics: Version 3.6.3 + Trackin...
41 views • 1 month ago



IrisBG Q&A Webinar 2017-09-07
(Topics: Labels, Propagation, Re...
19 views • 2 months ago



IrisBG Q&A Webinar 2017-08-03
(Topic : Report and Label design...
31 views • 3 months ago

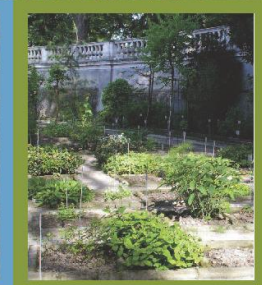
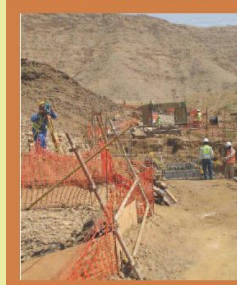
Search: BGCI Botanic Garden Manual

Chapter 5- Collection Record Management Systems

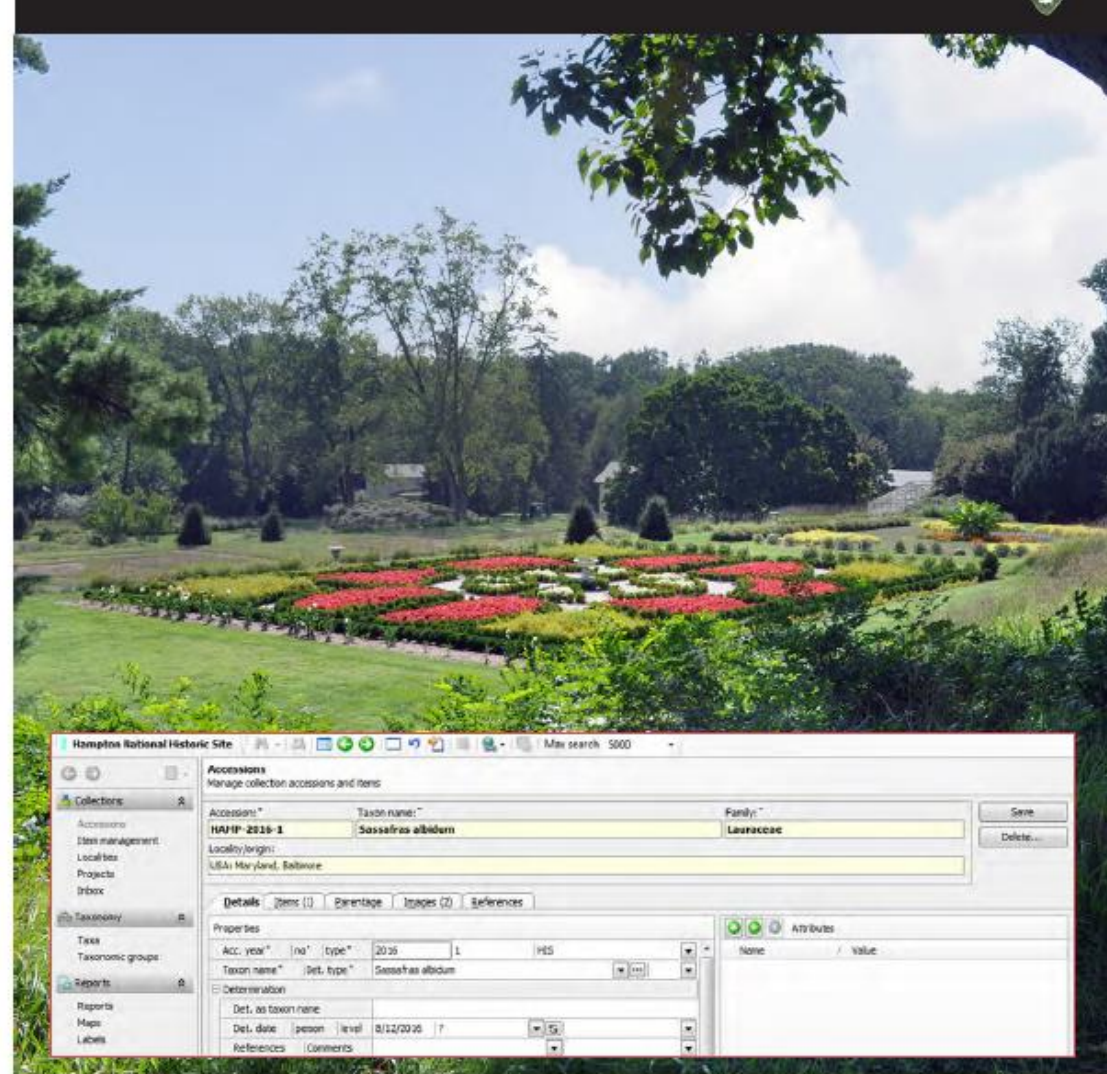
https://www.bgci.org/files/BG_Manual2017/chapter5.pdf

From Idea to Realisation

BGCI's Manual on Planning, Developing
and Managing Botanic Gardens



Search: National Park Service Modernizing Plant Records Management



OLMSTED
CENTER
for LANDSCAPE PRESERVATION



MODERNIZING PLANT RECORDS
MANAGEMENT

AN OVERVIEW AND EVALUATION OF DIGITAL RECORDKEEPING TOOLS



Argemone corymbosa

Thank
you!