

# The Triumphs and Tribulations of Trialing: All-America Selections and Beyond

Jessie Liebenguth, Horticulturist, Reiman Gardens

Mark Konlock, Director of Horticulture, Green Bay  
Botanical Garden

# Panel Overview

- Our gardens and trials
- Trial programs options
- Positives of trialing
- Difficulties of trialing
- Our favorite intros!



# Reiman Gardens



# Reiman Gardens

- Ames, Iowa
- Botanic Gardens of Iowa State University
- Opened in 1995
- Third site for horticulture garden at Iowa State University
- Approximately 15,000 square feet of formal trials (17.1 acres of informal trials!)





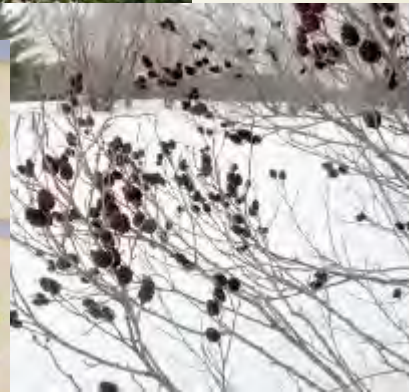
# Reiman Gardens (& ISU) Trial History



- ▶ Horticulture crop evaluations – 1877
  - ▶ Several hundred introductions from ISU
- ▶ All-America Rose Selections trial site – late 1930s
- ▶ Involved in pre-introductory test program of All-America Selections

# ISU Trial Successes

- ▶ 'Jonadel,' 'Chieftain' apples
- ▶ 'Pink Princess,' 'Red Prince,' 'White Knight' *Weigela*
- ▶ 'September Sun' seaside alder
- ▶ 'Carefree Beauty' rose
- ▶ 'Ames' rugosa rose
- ▶ 'Bantam,' 'Redspike' indiagrasses
- ▶ 'Crimson Sweet' watermelon





# Current Trials at Reiman Gardens





# Green Bay Botanical Garden





# Green Bay Botanical Garden



# Green Bay Botanical Garden



- ▶ Green Bay, Wisconsin
- ▶ Non profit 501 (c) (3)
- ▶ Lease land from Northeast Wisconsin Technical College
- ▶ Opened in 1996
- ▶ With Grand Garden addition 23.5 developed acres – largest botanic garden in Wisconsin



# Green Bay Botanical Garden



# Green Bay Botanical Garden



- ▶ Trialing started in 2011
- ▶ Earth-Kind® - 2011
  - ▶ Observational Rose
  - ▶ Now Only Northern Earth-Kind® Modern Rose trial site in United States – 2015
- ▶ A.R.T.S.® - 2015



# Green Bay Botanical Garden



- ▶ AAS – 2013
- ▶ Ball Horticultural Company – 2014
- ▶ Callicarpa – Chicago Botanic Garden - 2015

# What Can You Trial?





# Trialing for Breeders



## ► Breeders

- New introductions
- New lines
- Improved genetics in previous introductions
- Collect data on performance on site
- Verify or refute their trialing
- Get visitors excited about new plants—on site marketing

# Trialing for Breeders





# Trialing for Breeders



# Trialing for Breeders





# Trialing for Breeders

## Top Nine Annuals Selected in the Ball Horticultural Trial

### Whopper® Experimental 1630-5T2 Begonia

*Begonia* '1630-5T2'  
Large habit, bronze leaf, pink flower,  
very floriferous  
height 34" x width 24"; full sun or shade



### Whopper® Experimental 1620-8T1 Begonia

*Begonia* '1620-8T1'  
Large habit, green leaf, rose flower,  
Very floriferous  
height 34" x width 24"; full sun or shade



### Whopper Experimental 1630-13T1 Begonia

*Begonia* '1630-13T1'  
Large habit, bronze leaf, red flower,  
very floriferous  
height 34" x width 24", full sun or shade



### Purple Prince Joyweed

*Alternanthera brasiliana* 'Purple Prince'  
Deep purple foliage, great "spilling" habit,  
Heat resistant  
height 14" x width 20"; full sun



### Inferno Coleus

*Plectranthus scutellarioides* 'Inferno'  
Flery orange-red foliage, low maintenance,  
Consistent growth habit  
height 28" x width 24"; full sun or shade



### Red Green Foliage Whopper® Wax Begonia

*Begonia semperflorens-cultorum* 'Red Green Foliage'  
Large habit, green leaf, red flower,  
Very floriferous  
height 34" x width 24"; full sun or shade



### French Quarter Coleus

*Plectranthus scutellarioides* 'French Quarter'  
Green, magenta, burgundy foliage,  
Vigorous, low maintenance  
height 36" x width 28"; full sun or shade



### Rose Bronze Foliage Whopper® Wax Begonia

*Begonia semperflorens-cultorum* 'Rose Bronze Foliage'  
Large habit, bronze leaf, rose flower,  
Consistent habit, very floriferous  
height 34" x width 24"; full sun or shade



### Double Pink 17 MiniFamous™ Calibrachoa

*Calibrachoa* 'Double Pink 17'  
Consistent spilling habit, green foliage,  
Pink double flowers, very floriferous  
height 6" x width 12"; full sun



# Trialing with AAS

- ▶ All-America Selections
  - ▶ 501(c)5 non-profit with the goal of promoting new garden varieties and conducting impartial trials in North America
  - ▶ 85 years of trials





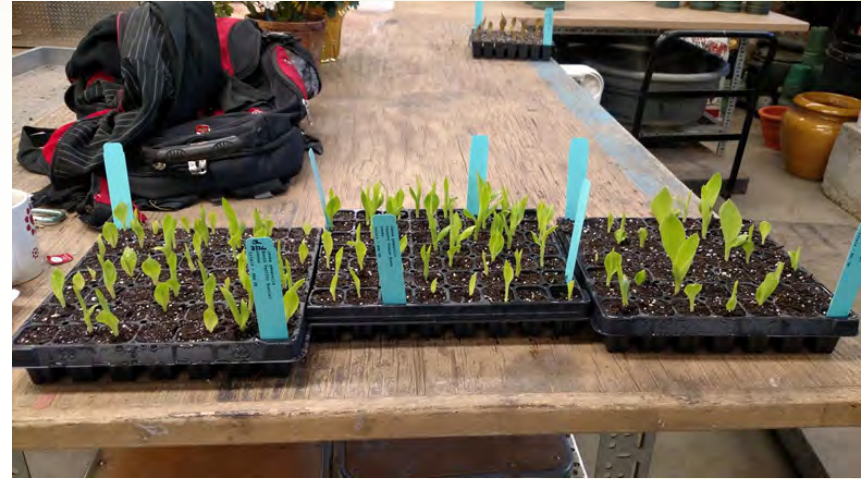
# Trialing with AAS

- ▶ AAS Trial Types
  - ▶ Ornamental from Seed
  - ▶ Ornamental from Vegetative Cuttings
  - ▶ Edibles (fruits, vegetables, and herbs)
  - ▶ Herbaceous perennials (three winter trial, first winners announced 2019)



# AAS Trialing Protocol

- ▶ Entries are submitted to AAS, then the comparison committee selects 1-3 comparison plants donated by competing breeding companies
- ▶ Entries are judged against the industry standards with similar traits





# AAS Trialing Protocol



- ▶ Entry and comparisons are grown exactly the same (seeding, transplanting, PGRs, etc.)
- ▶ Trial entry and comparisons are planted side-by-side
- ▶ Trials are evaluated through the season and results are submitted to AAS office in mid-fall

# AAS Trialing Protocol



- ▶ Scores are tabulated and winners are announced in three rounds (November, January, and July)
- ▶ Staggered announcements allow breeders to prepare publicity, seed supply, germination test results and other award requirements



# Trialing with AAS



- ▶ Approximately 80 judges
- ▶ Unbiased, unpaid horticulture professionals
- ▶ Sites include colleges and universities, breeders, public gardens, wholesale nurseries

# AAS Display Gardens

- Looking for gardens willing to display AAS Winners and narrate the AAS Story
- Option to chose flowers, edibles, or both
- Long-term partnerships with gardens dedicated to community outreach and education





# AAS Display Gardens

- Display space for 5 years of winners—either spread throughout displays or in one garden
- Signs, variety markers, and seed all provided
- No judging required, just visitor engagement
- Publicity through AAS website

Noelridge Park Gardens



# Rose Trialing with AGRS

- ▶ American Garden Rose Selections
  - ▶ One of two rose trialing programs introduced after AARS
  - ▶ First award winners announced in 2015
  - ▶ Revisiting previously introduced cultivars that may have not been recognized
  - ▶ Rules and protocols based on ADR trials





# Rose Trialing with AGRS



- ▶ Regional awards
  - ▶ Allows entries to earn awards without being perfect for every climate
- ▶ Fragrance award
- ▶ Approximately 12 trial sites
  - ▶ Public gardens, universities, municipal parks

# Rose Trialing with A.R.T.S.



- ▶ American Rose Trials for Sustainability™
  - ▶ Second rose trialing program in North America
  - ▶ First regional winners announced this year
  - ▶ Highest scoring weights given to seasonal flowering and attractive floral attributes, as well as foliage health and quality.



# Rose Trialing with A.R.T.S.®



"DOUBLE 10" (PPA)



- ▶ Awards A.R.T.S.® Local Artist designation, 4 or more Local Artist awards earns a Master Rose title
- ▶ Approximately 15 test sites
  - ▶ Public Gardens, universities, and municipal parks

# Rose Trialing with A.R.T.S.®

**2018 Master Rose Awards**  
(each won in Köppen Climate Regions  
CSA, CFA, DfA and Dfb)

**Master Rose**



**AMERICAN ROSE TRIALS  
FOR  
SUSTAINABILITY®**



© Courtney, 2018/2019

Double '10'™ ('LIM10') is a petal-packed, vibrantly colored orange hybrid tea. Bred by Ping Lim and introduced by Altman Plants.



Icecap™ ('MEiradens') is a double-white shrub rose with a mounded plant habit. Bred by Meiland International and William Radler and introduced by Star Roses and Plants.



The Peachy Knock Out Rose ('RADgo') is a semi-double, peachy-pink shrub rose with a mounded plant habit. Bred by William Radler and introduced by Star Roses and Plants.

**List of A.R.T.S.® Trial Gardens**

- Boerner Botanical Gardens, Hales Corners, Wisconsin
- City of Farmers Branch, Farmers Branch, Texas\*
- City of Tyler, Tyler, Texas\*
- Descanso Gardens, La Cañada Flintridge, California\*
- Green Bay Botanical Garden, Green Bay, Wisconsin\*
- Longwood Gardens, Kennett Square, Pennsylvania\*
- Louisiana State University, Hammond, Louisiana\*
- Mesa Community College, Mesa, Arizona
- Morcom Rose Garden, Oakland, California
- Naugatuck Valley Community College, Waterbury, Connecticut\*
- North Dakota State University, Absaraka, North Dakota\*
- Swarthmore College, Swarthmore, Pennsylvania\*
- Tulsa Parks and Recreation, Tulsa, Oklahoma\*
- University of Minnesota Extension - Clay County, Moorhead, Minnesota\*
- University of Utah, Salt Lake City, Utah

\* Sites hosting the trial group of roses resulting in the 2018 A.R.T.S.™ winners



# Rose Trialing with A.R.T.S.®

**Farruca® Courtyard®** ("POUlc032") is a compact growing climber with double, deep red blooms. (Won in region: CSA) Bred by Pernille & Mogens Nyegaard Olesen and distributed for Poulsen Roser A/S by several growers and brokers in North America among others; Rocket Farms Inc., Aldershot of Canada Ltd. and Griffin Greenhouse Supplies Inc.

**2018 Local Artist Awards**  
(Winning in the designated Köppen Climate Region)

**Local Artist**

**AMERICAN ROSE TRIALS**  
FOR  
**SUSTAINABILITY.ORG**

**Petaluma Cover® Towne & Country®** ("POUlc004") is a compact, spreading shrub rose with semi-double, vibrant, orange-pink blooms. (Won in region: DFB) Bred by Pernille & Mogens Nyegaard Olesen and distributed for Poulsen Roser A/S by several growers and brokers in North America among others; Rocket Farms Inc., Aldershot of Canada Ltd. and Griffin Greenhouse Supplies Inc.

**Look-A-Likes! BougainFeeYa ("MEickinawa")** is a compact, spreading shrub rose with vibrant red single blooms. (Won in region: DFB) Bred by Meiland International and introduced by Star Roses and Plants.

**Look-A-Likes! Apple Dapple ("MEIplumty")** is a spreading shrub rose with bluish-pink, single blooms. (Won in regions: CFA and DFB) Bred by Meiland International and introduced by Star Roses and Plants.

# Earth-Kind® Trials: Roses and Beyond



▶ Texas AgriLife Extension Service



- ▶ Roses and other plants hydrangeas, ninebark
- ▶ Observational feeds into replicated and randomized evaluations
- ▶ Modern Rose Trial (hybrid tea and floribunda)
  - ▶ Green Bay Botanical Garden – Northern Site
  - ▶ Houston, Texas – Southern Site



# Earth-Kind® Trials: Roses and Beyond

## Top Nine Roses Selected in the Earth-Kind® Rose Trial

### **Icy Drift™** shrub rose

*Rosa 'MEllpicdevoj'*

Repeat bloomer, great border plant

Height 1' x Width 4'



### **Sunshine Daydream** grandiflora rose

*Rosa 'MElkokan'*

2012 All-America Rose Selection Winner

Height 4' x Width 5'



### **Radler Yellow** shrub rose

*Rosa 'CP034131'* (Has not been released to the public.)

Yellow flowers turning pink as they mature

Height 3' x Width 3'



### **Carefree Beauty™** shrub rose

*Rosa 'BUCbl'*

Fragrant blooms with orange-red hips

Height 5' x Width 5'



### **Sigrid™** shrub rose

*Rosa 'UMNlsigrd'*

Northern Accents™ shrub rose collection

Height 2' x Width 3'



### **Salmon Crossover** shrub rose

*Rosa 'CP981537'* (Has not been released to the public.)

Unique salmon colored flowers

Height 3' x Width 3'



### **Cloud 10™** climbing floribunda rose

*Rosa 'RADclean'*

Fragrant, English rose-like flowers

Height 4' x Width 5'



### **Pomponella®** floribunda rose

*Rosa 'KORpompan'*

Cottage garden or specimen plant

Height 4' x Width 5'



### **Summer Memories** shrub rose

*Rosa 'KORutell'*

Upright, arching, compact growth

Height 3' x Width 4'



# Other trials...

- ▶ *Callicarpa*
  - ▶ Chicago Botanic Garden
  - ▶ Early fruit coloration for colder climates
  - ▶ Leaf drop so visible fruit
  - ▶ Winter hardiness
  - ▶ Form
  - ▶ Fruit production and size





“Ok, what do I do with all my data and evaluations?”



Email

Password

LOGIN

*Need a password reminder?*

APPLY FOR ACCESS

Consolidated Plant Trial Results

HOME | TRIAL GARDENS | HOW IT WORKS | SPONSORS | TRIAL RESULTS | CONTACT US



To view plants & results,  
please login.

Email

Password

LOGIN

*Need a password reminder?*

APPLY FOR ACCESS

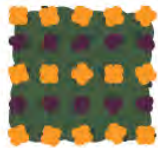
## National Plant Trials Database

Consolidated Plant Trials Results

The National Plant Trials Database serves as one central repository for trial data of the plants from the breeders who choose to participate. The trials grounds that choose to participate agree to adopt a standardized trialing protocol and a minimum set of standardized scoring procedures. At the end of



# Plant Trials Database



**PLANT  
TRIALS  
DATABASE**

Welcome back Iowa State University - Reiman Gardens!  
[Trial Garden Logout](#) | [Trial Garden Center](#)

**Consolidated Plant Trial Results**

[HOME](#) | [TRIAL GARDENS](#) | [HOW IT WORKS](#) | [SPONSORS](#) | [TRIAL RESULTS](#) | [CONTACT US](#)

**Welcome back, Iowa State University - Reiman Gardens!**

Trial Gardens Main Post Login Landing Page

*Tuesday, June 06, 2017*

Select Any of the links below to access the corresponding functionality.

- [Submit Trial Results](#)
- [Modify Contact Info](#)
- [View All Trial Results](#)
- [Professionals Receiving Access to Plant Trials](#)
- [Download Plant Trials Logo](#)
- [View Trial Statistics](#)
- [NEW - My Region Filters](#)
- [Logout](#)

**NEW!**

Select Specific  
Trial Gardens to  
Create Your Own  
**Custom Region**  
and view the results only  
from the trial gardens in  
your custom region.

**Additional Trial Garden Options**

[Submit Trial Results](#) | [Modify Contact Info](#) | [View All Trial Results](#) | [Professionals Receiving Access to Plant Trials](#)  
[Download Plant Trials Logo](#) | [View Trial Statistics](#) | [NEW - My Region Filters](#) | [Logout](#)

[Home](#) | [Trial Gardens](#) | [How it Works](#) | [Sponsors](#) | [Trial Results](#) | [Contact Us](#)

© 2017 All America Selections. All Rights Reserved. Site Administered by: All America Selections. Site Produced by Clarity Connect, Inc.





# Plant Trials Database: See Averages—Results at a Glance

Variety	Score	Variety	Score
Lamium maculatum Dead Nettle (Pink Chablis) from Proven Winners	3.41	Lobelia erinus 'Techno® Heat Electric Blue' Techno® Heat Lobelia from Syngenta Flowers	3.00
Lamium maculatum 'Purple Chablis™' Dead Nettle from Proven Winners	3.28	Lobelia erinus 'Techno® Heat Light Blue' Techno® Heat Lobelia from Syngenta Flowers	3.50
Lantana 'Evita Compact Yellow' Evita from Dummen Orange	4.53	Lobelia erinus 'Techno® Heat Upright Dark Blue' Techno® Heat Upright Lobelia from Syngenta Flowers	4.00
Lantana 'Evita Yellow' Evita from Dummen Orange	4.50	Lobelia erinus 'Techno® Heat Upright Light Blue' Techno® Heat Upright Lobelia from Syngenta Flowers	5.00
Lantana camara 'Lucky™' Red' Lantana from Ball FloraPlant	4.19	Lobelia erinus 'Techno® Heat Upright Purple' Techno® Heat Upright Lobelia from Syngenta Flowers	2.80
Lantana camara 'Bandana® Red Imp' Bandana® Lantana from Syngenta Flowers	3.97	Lobelia erinus 'Techno® Heat Upright White Imp.' Techno® Heat Upright Lobelia from Syngenta Flowers	4.50
Lantana camara 'Landscape Bandana® Lemon Zest' Landscape Bandana® Lantana from Syngenta Flowers	3.82	Lobelia erinus 'Techno® Heat Violet' Techno® Heat Lobelia from Syngenta Flowers	4.00
Lantana camara 'Landscape Bandana® Red Imp' Landscape Bandana® Lantana from Syngenta Flowers	3.71	Lobelia erinus 'Techno® Heat White' Techno® Heat Lobelia from Syngenta Flowers	3.00
Lantana camara 'Berry Blend' Lantana from Proven Winners	4.20	Lobelia hybrid 'Suntory Lobelia® Compact Blue' Lobelia from Suntory Flowers Ltd.	3.38
Lantana camara 'Citrus Blend' Lantana from Proven Winners	4.20	Lobelia hybrid 'Suntory Lobelia® Compact Pink' Lobelia from Suntory Flowers Ltd.	3.07
Lantana camara 'Pinkberry Blend' Lantana from Proven Winners	3.50	Lobelia hybrid 'Suntory Lobelia® Compact Sky Blue' Lobelia from Suntory Flowers Ltd.	4.49
Lantana camara 'Landscape Bandana® Yellow' Landscape Bandana® Lantana from Syngenta Flowers	4.38	Lobelia hybrid 'Suntory Lobelia® Trailing Blue with Eye' Lobelia from Suntory Flowers Ltd.	4.02
Lantana camara 'Landscape Bandana® Pink' Landscape Bandana® Lantana from Syngenta Flowers	4.33	Lobelia hybrid 'Suntory Lobelia® Trailing Pink' Lobelia from Suntory	3.63
Lantana camara 'Landscape Bandana® Gold' Landscape Bandana® Lantana from Syngenta Flowers	4.25		
Lantana camara 'Bandana® White' Bandana® Lantana from Syngenta Flowers	3.30		
Lantana camara 'Bandana® Rose' Bandana® Lantana from Syngenta	3.00		



# Plant Trials Database: Look at Specific Plants and Individual Ratings

The screenshot shows a web browser window with the Plant Trials Database interface. The browser's address bar and tabs are visible at the top. The website header includes a logo for 'PLANT TRIALS DATABASE' and a welcome message for Iowa State University. A navigation menu is located below the header. The main content area features the 'BallFloraPlant' logo and the title 'Lantana camara 'Lucky™ Red''. Below the title, there are links for 'Previous Plant' and 'Next Plant', and a section for '2016 Trial Year' with the text 'sun annual'. The 'Plant Type' is listed as 'Annual' and the 'Bloom Color' as 'Multi-Color'. To the right, a 'Ratings Summary' box displays a '2016 Rating' of 4.19, with a low of 2.5, a high of 5.0, 57 total ratings, and 40 ratings of 4 or higher. A 'Rating Chart' bar graph shows the average rating for each of the five rating periods, with ratings increasing from Period 1 to Period 5. At the bottom, there is a section for '2016 Individual Ratings for Lantana camara 'Lucky™ Red'' and a footer with contact information for The Trial Gardens at UGA, Mississippi State University, and Penn State Trial Gardens.

ff for my eyeb... HELP!! my google docs Web VQF Staff (BG B... Lexmark XM1145 CYBox tree stuff Life ISU Germinating and Gro ISU Propagating Plants w... kids and trees DIY Heat Mat Spe

Welcome back Iowa State University - Reiman Gardens!  
[Trial Garden Logout](#) | [Trial Garden Center](#)

## PLANT TRIALS DATABASE

**Consolidated Plant Trial Results**

HOME | TRIAL GARDENS | HOW IT WORKS | SPONSORS | TRIAL RESULTS | CONTACT US

BallFloraPlant.

### Lantana camara 'Lucky™ Red'

Lantana or Lucky™ Red

[<< Previous Plant](#) | [Next Plant >>](#)

**2016 Trial Year**  
sun annual

*Plant Type:* Annual

*Bloom Color:*  
Multi-Color

**Ratings Summary:**  
Low: 2.5 | High: 5.0  
# of Ratings: 57  
# of 4+ Ratings: 40

**2016 Rating**  
**4.19**

#### Rating Chart

Rating Week	Rating
Period 1	4.0
Period 2	4.2
Period 3	4.3
Period 4	4.4
Period 5	4.6

Rating

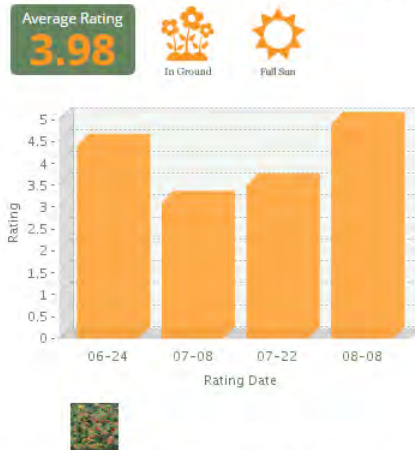
Rating Week

2016 Individual Ratings for Lantana camara 'Lucky™ Red'

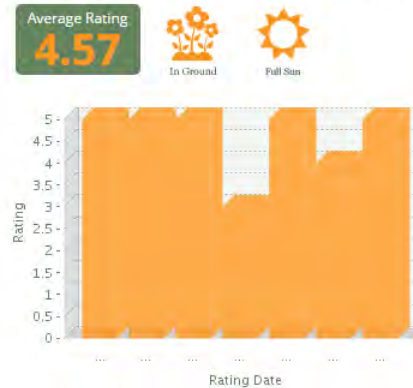
The Trial Gardens at UGA Mississippi State University - Truck Crops Branch Experiment Station Penn State Trial Gardens

# Plant Trials Database: See Scores and Images from Each Site (that submits data!)

## Cornell University Trial Gardens (Ithaca)



## Mississippi State University - South Mississippi Branch Experiment Station Trial Gardens



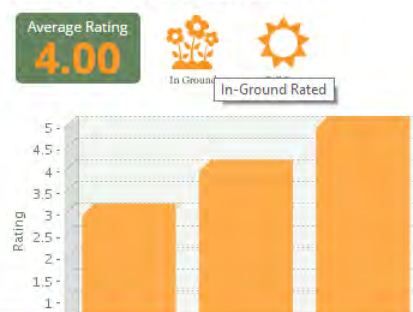
## University of Tennessee Trial Gardens



## University of Wisconsin West Madison Ag Research Station



## University of Minnesota West Central Research and Outreach Center



## Cornell Long Island





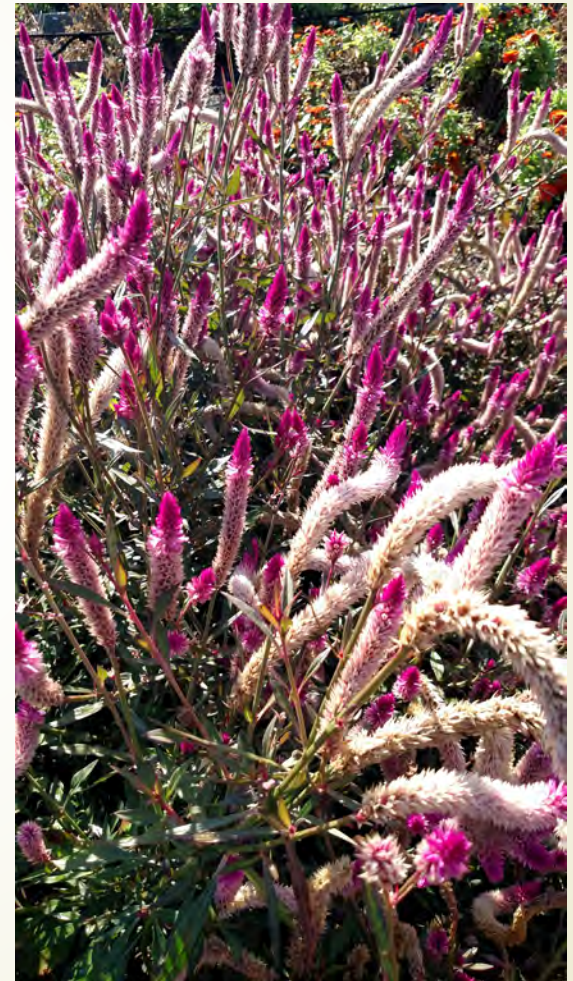
# Why Do We Love Trials?

- Sneak peak at new materials



# Why Do We Love Trials?

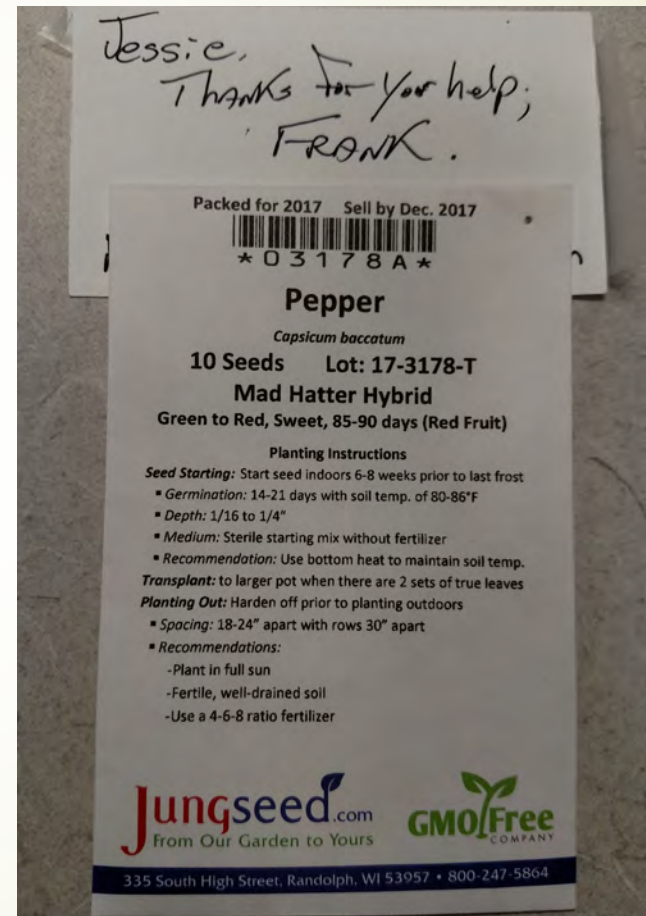
- ▶ Helping our industry
  - ▶ Anecdotal information about new introductions





# Why Do We Love Trials?

- Helps our gardens with missions, guides outreach, furthers our institutions



# Why Do We Love Trials?

➤ Free plants!!





# Why Do We Love Trials?

- Involve Board Members
- Learn new skills – iPad data collection





# Why Do We Love Trials?

- ▶ Educational opportunity for interns





# Why Do We Love Trials?

- ▶ Educational opportunity for interns





# Why Do We Love Trials?

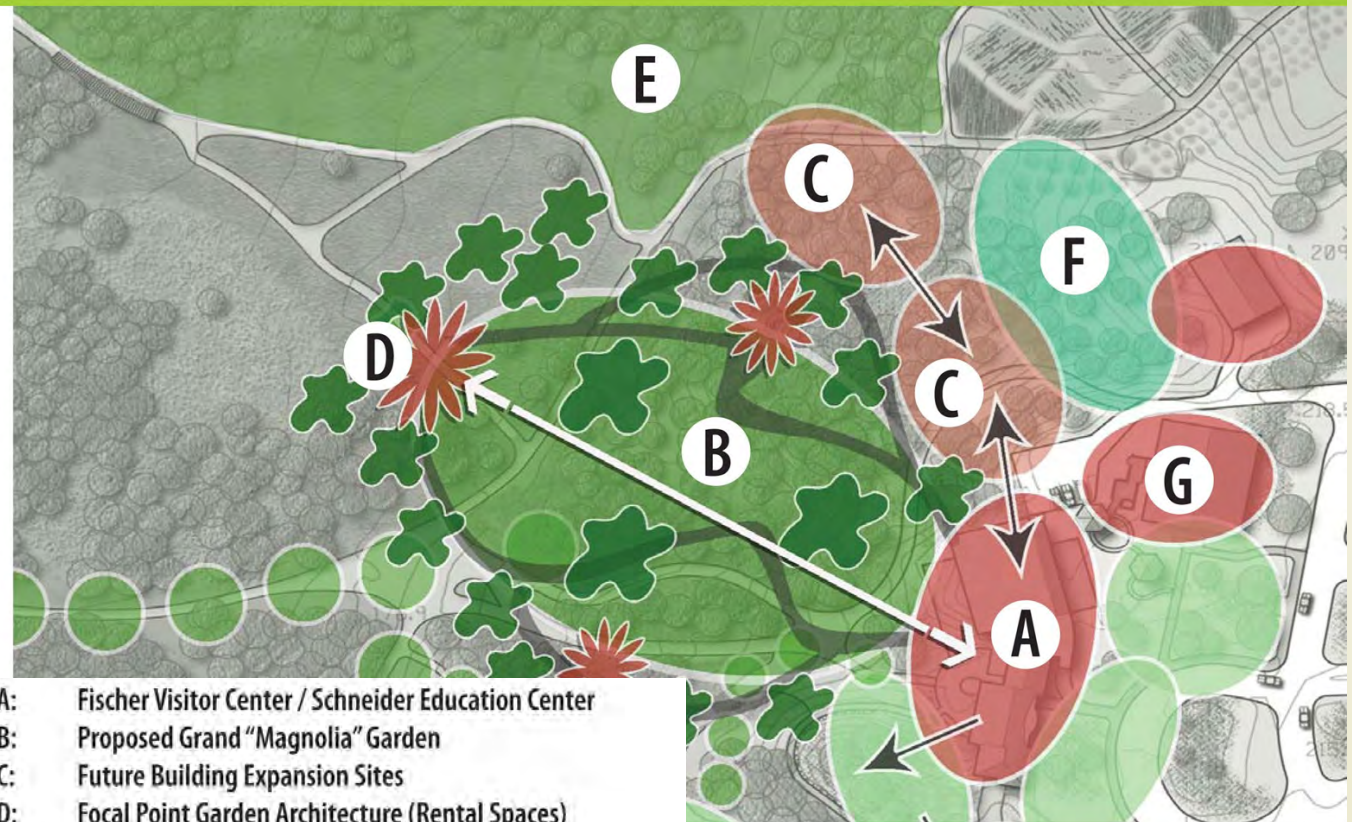
- ▶ Community involvement
- ▶ Cross campus education





# Why Do We Love Trials?

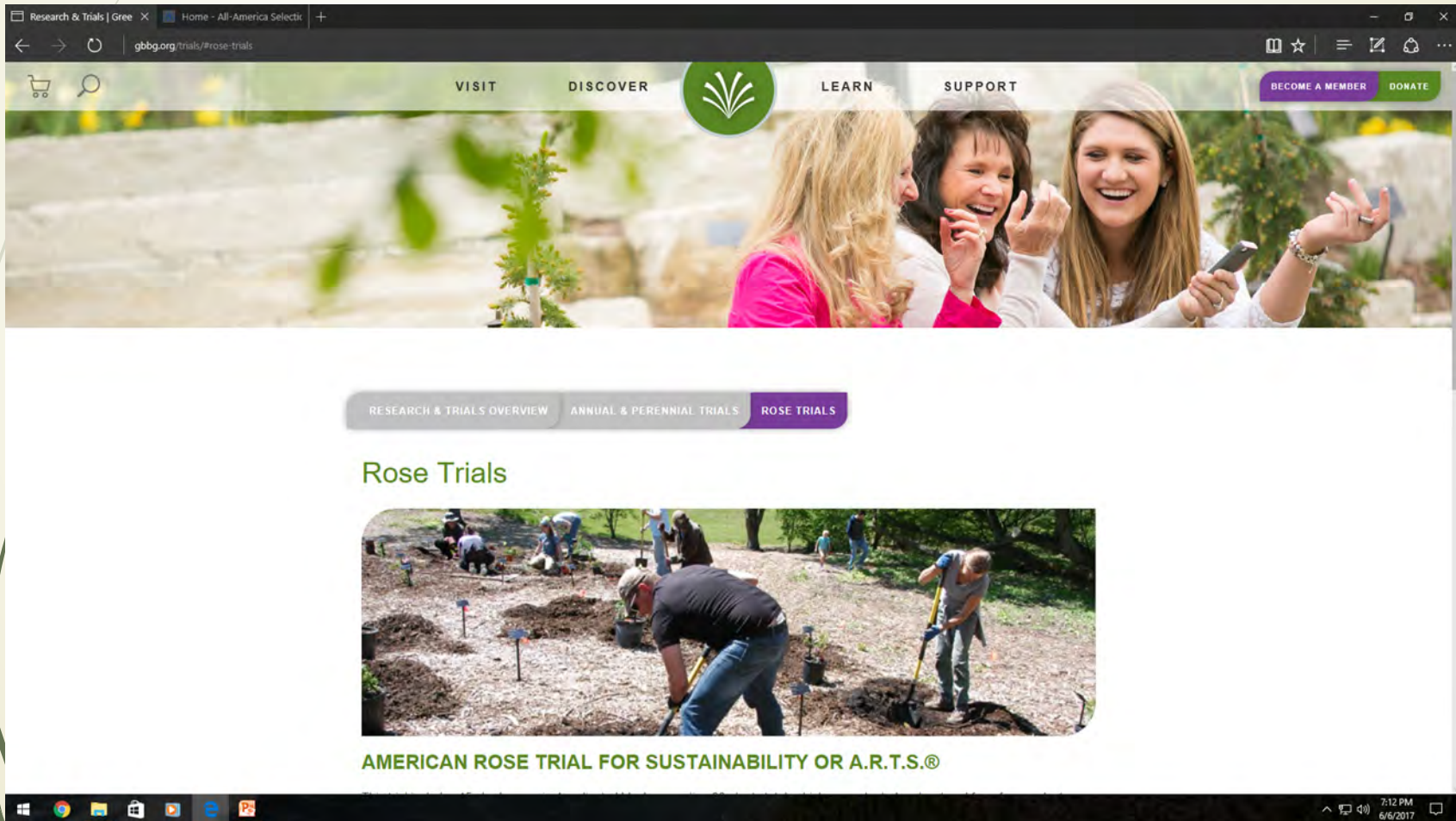
## Organizational Buy In



- A: Fischer Visitor Center / Schneider Education Center
- B: Proposed Grand "Magnolia" Garden
- C: Future Building Expansion Sites
- D: Focal Point Garden Architecture (Rental Spaces)
- E: Proposed Arboretum Area
- F: Future Location for Trial Gardens
- G: NWTC Horticulture Learning Center

# Why Do We Love Trials?

- ▶ Sharing results with visitors and the public



The screenshot displays the GBBG website interface. At the top, there is a navigation bar with links for 'VISIT', 'DISCOVER', 'LEARN', and 'SUPPORT', along with buttons for 'BECOME A MEMBER' and 'DONATE'. Below the navigation bar is a large banner image showing three women smiling and looking at a smartphone. Underneath the banner is a horizontal menu with three tabs: 'RESEARCH & TRIALS OVERVIEW', 'ANNUAL & PERENNIAL TRIALS', and 'ROSE TRIALS'. The 'ROSE TRIALS' tab is currently selected. Below the menu, the heading 'Rose Trials' is displayed. Underneath the heading is a photograph of several people working in a garden, planting and tending to rose bushes. At the bottom of the page, the text 'AMERICAN ROSE TRIAL FOR SUSTAINABILITY OR A.R.T.S.®' is visible. The browser's address bar shows 'gbbg.org/trials/#rose-trials' and the system tray at the bottom indicates the time is 7:12 PM on 6/6/2017.



# What Don't We Love About Trials?

- ▶ Big time investment!
  - ▶ Seeding, transplanting, scheduling, planting, maintaining, evaluating, data entry
  - ▶ Reiman Gardens: approximately 200 entries



# What Don't We Love About Trials?

- ▶ Time Management





# What Don't We Love About Trials?

- Space Management



# What Don't We Love About Trials?

- Poor germination





# What Don't We Love About Trials?

- Bad things happen to good plants



# What Don't We Love About Trials?

- ▶ Trialing our least favorites...



Territorial Seed, Burpee Seed



# What Don't We Love About Trials?

➤ Failure





Any questions yet?





# Jessie's Picks!

*Salvia coccinea* Summer Jewel series



# Jessie's Picks!

'Escamillo' cornito di  
toro pepper



'Cornito Giallo'  
cornito di toro pepper





# Jessie's Picks!

*Canna Cannova series*



American Takii, Ball Seed

# Jessie's Picks!



Ball Seed





# Jessie's Picks!

Tomato 'Patio  
Choice Yellow'



Kale 'Prizm'



# Mark's Picks!

Petunia Tidal  
Wave Red Velour





# Mark's Picks!

Begonia  
Whopper series



# Mark's Picks!

Alternanthera  
Purple Prince





# Mark's Picks!

Rose Look-A-Likes®  
BougainFeelYa



Thank You!

