

Visualizing a Garden's Night Potential with Light



CHANGING PERSPECTIVES: **PLANTING FOR THE FUTURE**

2016 AMERICAN PUBLIC GARDENS ASSOCIATION ANNUAL CONFERENCE





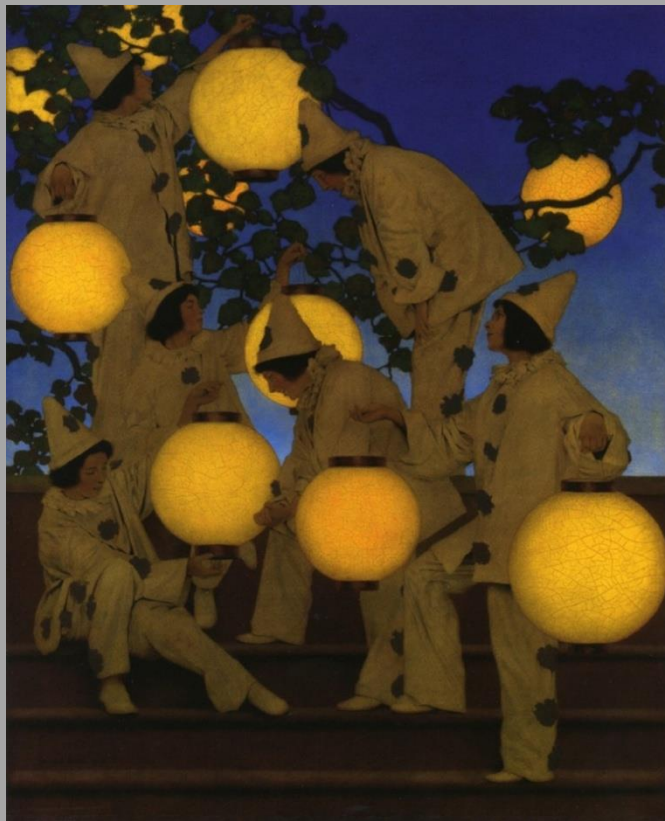
Teignmouth by Moonlight by Thomas Luny



CHANGING PERSPECTIVES: PLANTING FOR THE FUTURE

2016 AMERICAN PUBLIC GARDENS ASSOCIATION ANNUAL CONFERENCE





Lantern Bearers by Maxfield Parrish



CHANGING PERSPECTIVES: **PLANTING FOR THE FUTURE**

2016 AMERICAN PUBLIC GARDENS ASSOCIATION ANNUAL CONFERENCE



Light vs Lighting

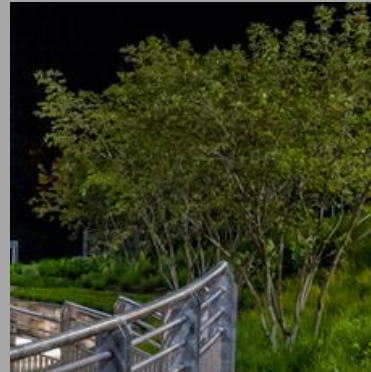
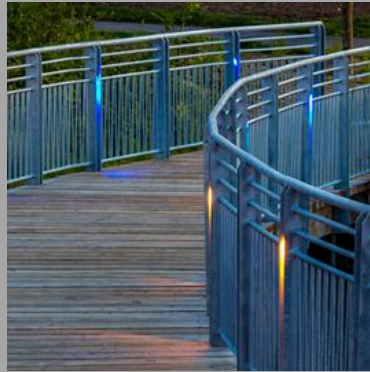


CHANGING PERSPECTIVES: **PLANTING FOR THE FUTURE**

2016 AMERICAN PUBLIC GARDENS ASSOCIATION ANNUAL CONFERENCE



Primary Elements of Exterior Lighting Composition



CHANGING PERSPECTIVES: **PLANTING FOR THE FUTURE**

2016 AMERICAN PUBLIC GARDENS ASSOCIATION ANNUAL CONFERENCE



Signage

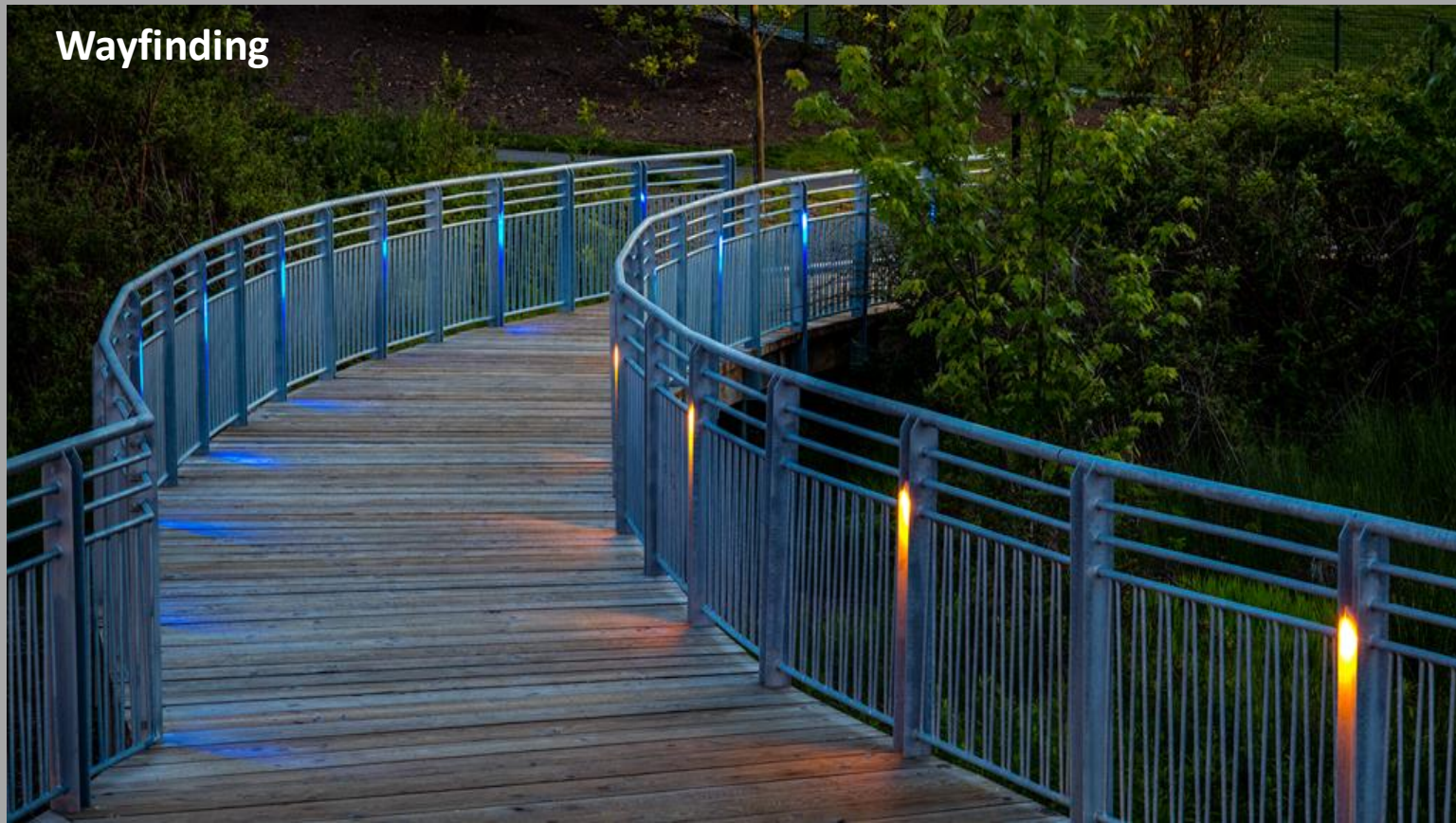


CHANGING PERSPECTIVES: **PLANTING FOR THE FUTURE**

2016 AMERICAN PUBLIC GARDENS ASSOCIATION ANNUAL CONFERENCE



Wayfinding



CHANGING PERSPECTIVES: **PLANTING FOR THE FUTURE**

• *Image by*

2016 AMERICAN PUBLIC GARDENS ASSOCIATION ANNUAL CONFERENCE



Security/Safety



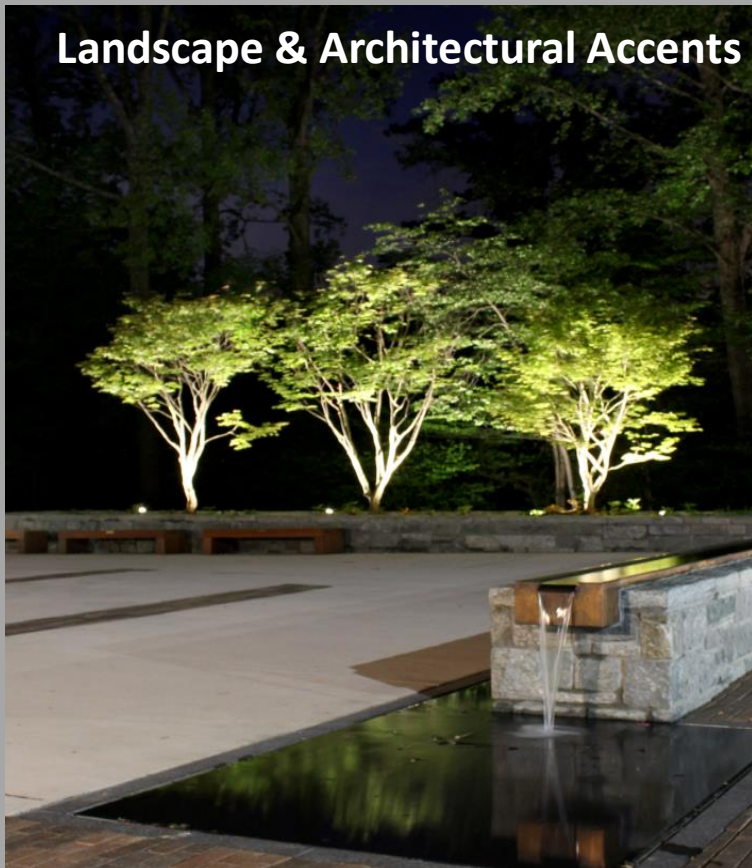
CHANGING PERSPECTIVES: PLANTING FOR THE FUTURE

• *Image by*

2016 AMERICAN PUBLIC GARDENS ASSOCIATION ANNUAL CONFERENCE



Landscape & Architectural Accents



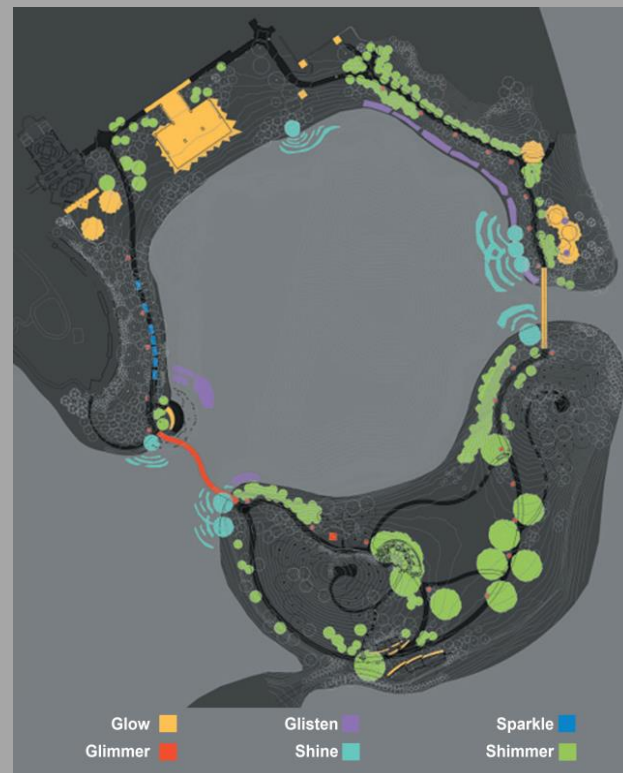
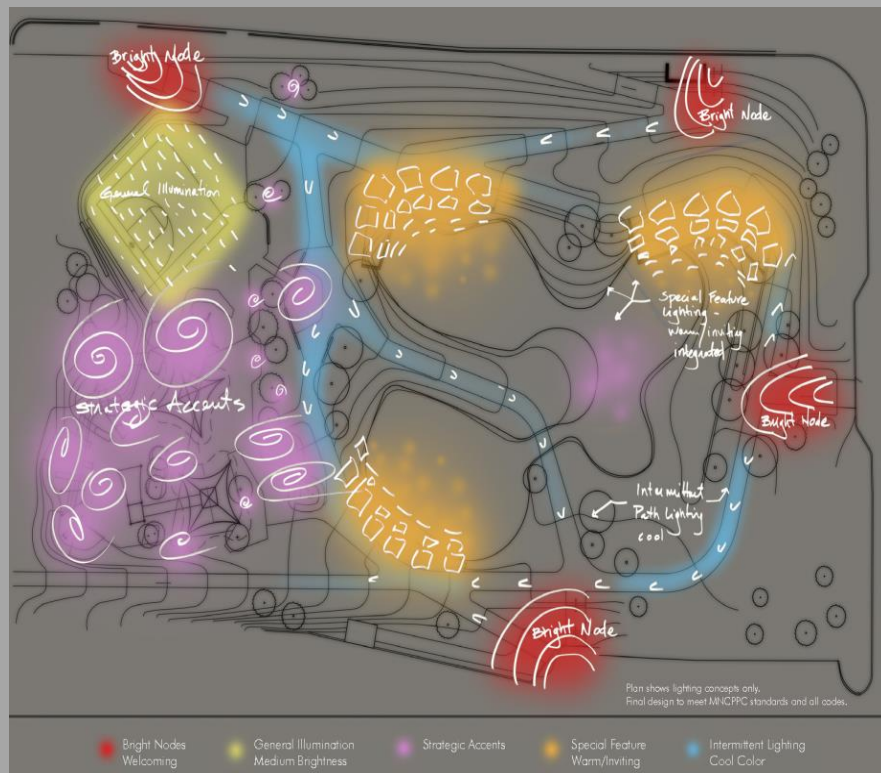
CHANGING PERSPECTIVES: PLANTING FOR THE FUTURE

• *Image by*

2016 AMERICAN PUBLIC GARDENS ASSOCIATION ANNUAL CONFERENCE



Lighting Concepts

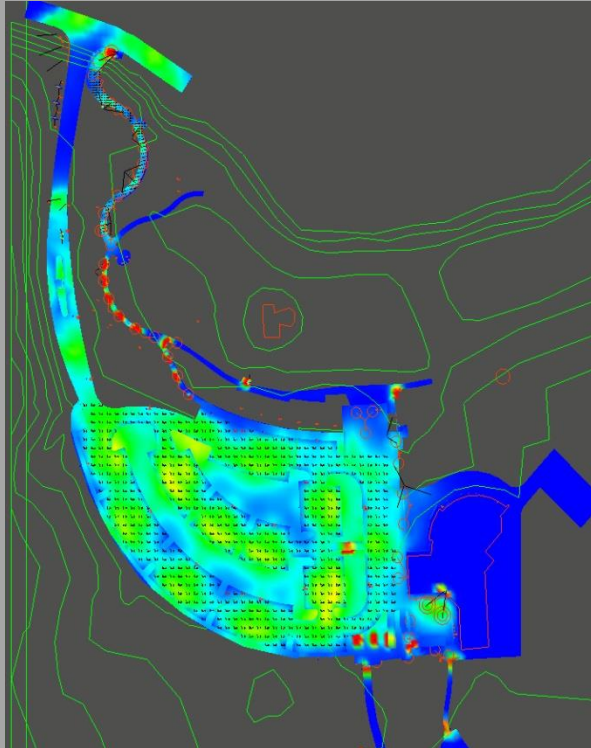


CHANGING PERSPECTIVES: PLANTING FOR THE FUTURE

2016 AMERICAN PUBLIC GARDENS ASSOCIATION ANNUAL CONFERENCE

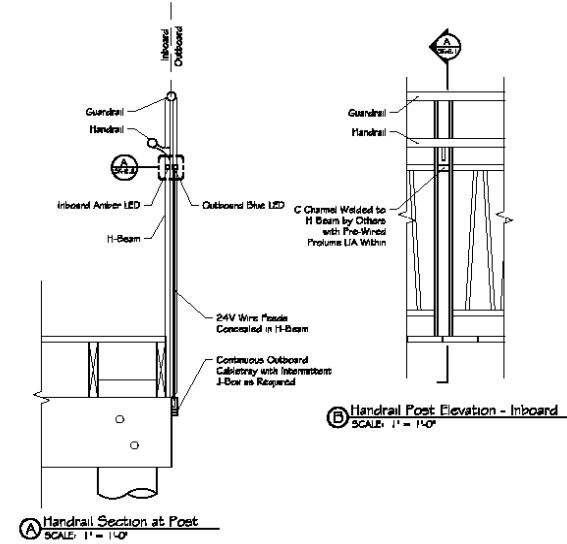


Planning



SKETCH

D. Gilmore/Lighting Design, Inc.
D. Gilmore/Lighting Design, Inc.
418 Hargrave Dr. #218, Pompano Beach, FL 33062 P: 954-389-4511 F: 954-389-4511



Schematic Mounting Details - Guardrail Post Lighting As Noted 10/20/09
DRAWING TITLE DRAWING SCALE DRAWING REFERENCE DATE
Germantown Town Park SK-2.1
PROJECT NAME
\\server\share\proj\sk\1\sketches\guardrail\germantown park\lighting\development\sk-2.1\sketches\germantown - sk-2.1 notes - guardrail set - 10/20/09.dwg



CHANGING PERSPECTIVES: PLANTING FOR THE FUTURE

2016 AMERICAN PUBLIC GARDENS ASSOCIATION ANNUAL CONFERENCE



Budgeting



CHANGING PERSPECTIVES: **PLANTING FOR THE FUTURE**

2016 AMERICAN PUBLIC GARDENS ASSOCIATION ANNUAL CONFERENCE





CHICAGO BOTANIC GARDEN
MASTER SITE PLAN - OCTOBER 2012

Chicago Botanic Garden



CHANGING PERSPECTIVES: PLANTING FOR THE FUTURE

2016 AMERICAN PUBLIC GARDENS ASSOCIATION ANNUAL CONFERENCE





Photos © OvS



CHANGING PERSPECTIVES: **PLANTING FOR THE FUTURE**

2016 AMERICAN PUBLIC GARDENS ASSOCIATION ANNUAL CONFERENCE





Photo © OvS



CHANGING PERSPECTIVES: **PLANTING FOR THE FUTURE**

2016 AMERICAN PUBLIC GARDENS ASSOCIATION ANNUAL CONFERENCE





Photos © Richard Felber



CHANGING PERSPECTIVES: PLANTING FOR THE FUTURE

2016 AMERICAN PUBLIC GARDENS ASSOCIATION ANNUAL CONFERENCE





Photos © Chicago Botanic Garden



CHANGING PERSPECTIVES: **PLANTING FOR THE FUTURE**

2016 AMERICAN PUBLIC GARDENS ASSOCIATION ANNUAL CONFERENCE





Photo © Chicago Botanic Garden



CHANGING PERSPECTIVES: **PLANTING FOR THE FUTURE**

2016 AMERICAN PUBLIC GARDENS ASSOCIATION ANNUAL CONFERENCE





CHANGING PERSPECTIVES: **PLANTING FOR THE FUTURE**

2016 AMERICAN PUBLIC GARDENS ASSOCIATION ANNUAL CONFERENCE





Photo © Hoachlander Davis



Photo © Maxwell Mackenzie



Photo © George Brown



Photo © The Cultural Landscape Foundation

Brookside GARDENS



CHANGING PERSPECTIVES: **PLANTING FOR THE FUTURE**

2016 AMERICAN PUBLIC GARDENS ASSOCIATION ANNUAL CONFERENCE





CHANGING PERSPECTIVES: **PLANTING FOR THE FUTURE**

2016 AMERICAN PUBLIC GARDENS ASSOCIATION ANNUAL CONFERENCE



Why not lighting before?

- Parks culture: no one in park after dark
- Traditional programming audience (very young & retired) aren't out after dark
- Dated and failing infrastructure
- Difficulty of obtaining funding for smaller CIP projects

Why lighting now?

- Build new audiences
- Develop new programs and add value to existing programs
- Make connections to a broader community to be relevant and fundable
- Generate revenue to supplement inadequate (and proportionately declining) operating budget



Brookside Gardens Master Plan 2003



Legend

- Phase I – 1800 Glenallan Ave Entry**
- Phase II – Parking Lot Expansion**
- Phase III – Stream Bank Stabilization**
- Phase IV – Gude Garden Renewal**
- Phase V – Propagation Area A**
- Phase VI – Overflow Parking**
- Phase VII – Propagation Area B**
- Phase VIII – Aquatic Garden Renewal**
- Phase IX – Tent Terraces**
- Phase X – Visitors Center Renovation**
- Phase XI – Woodland Garden Renewal**
- Phase XII – Forest Boardwalk Loop**
- Phase XIII – Conservatory**
- Phase XIV – Feature Garden Renewal**
- Phase XV – Native Wetland Garden**



CHANGING PERSPECTIVES: **PLANTING FOR THE FUTURE**

2016 AMERICAN PUBLIC GARDENS ASSOCIATION ANNUAL CONFERENCE



Brookside GARDENS

A Garden Gateway

KEY

- | | |
|-----------------------------|-------------------------|
| 1. Entry Terrace | 14. Water Feature |
| 2. Magnolia Art Work | 15. Gude Garden Path |
| 3. Boardwalk | 16. Pedestrian Path |
| 4. Ginkgo Canopy | 17. Composting Toilet |
| 5. Entry Drive | 18. EV Charging Station |
| 6. Entry Gate | 19. Accessible Ramp |
| 7. Gate House | 20. Gabion Wall |
| 8. Permeable Paving/Parking | 21. Bike Rack |
| 9. Bioretention | 22. Crosswalk |
| 10. Overlook/Bus Parking | 23. Bridge |
| 11. Underlook Terrace | 24. Stairs |
| 12. Entry Court | 25. Terrace |
| 13. South Terrace | 26. Gate |



CHANGING PERSPECTIVES: PLANTING FOR THE FUTURE

2016 AMERICAN PUBLIC GARDENS ASSOCIATION ANNUAL CONFERENCE



Intent **MOON LIGHT**

Through variations in the overall lighting composition, articulated zones of illumination define night spaces in a welcoming and informative fashion.

Quantity of light, color temperature, and fixture spacing comprise the overall palette by using discrete hardware integrated into the landscape, rendering an energy-efficient, maintenance-friendly and dark sky compliant design.

The visitor arrives intrigued, and later departs with a lasting nocturnal memory of Brookside Garden.



CHANGING PERSPECTIVES: **PLANTING FOR THE FUTURE**

2016 AMERICAN PUBLIC GARDENS ASSOCIATION ANNUAL CONFERENCE



<p>Furnish and install site lighting luminaires at bus parking Overlook, including install luminaires and poles, wiring/connection. Complete in place. Lighting, \$10,200 Electrical, \$3000</p>	914	10,200.00	50,690.00	45,000.00	2,500.00
<p>Furnish and install electrical work for site lighting luminaires at Underlook, including wiring/connection. Complete in place.</p>	915	800.00	39,426.00	35,000.00	3,600.00
<p>Furnish and install site lighting luminaires at Underlook, and associated electrical work including install luminaires and poles, and connection. Complete in place. Lighting, \$900 Electrical, \$300</p>	916	1,200.00	73,219.00	65,000.00	3,600.00
<p>Furnish and install lighting/electrical at Gatehouse, including install luminaires and poles, trenching, wiring/conduits, poles, connection to lighting control panels, duplex GFI weatherproof, underground mark tape, insulated GW, reinforced concrete footing. Complete in place. Exterior only. Lighting, \$2,300.00 Electrical, \$</p>	917	2,300.00	36,046.00	32,000.00	4,600.00
<p>Furnish and install electrical work for (1) one EV charging station with (2) two charging ports, including grounding connection, ss hardware and fasteners, reinforced concrete footing, electrical stub out and shop drawings.</p>	918	1,800.00	1,352.00	1,200.00	2,500.00
<p>Furnish and install (1) one EV charging station with (2) two charging ports, including wiring and connection, ss hardware and fasteners.</p>	919	12,000.00	2,816.00	2,500.00	7,500.00
Subtotal		376,500.00	772,405.00	717,570.00	897,800.00



CHANGING PERSPECTIVES: PLANTING FOR THE FUTURE

2016 AMERICAN PUBLIC GARDENS ASSOCIATION ANNUAL CONFERENCE

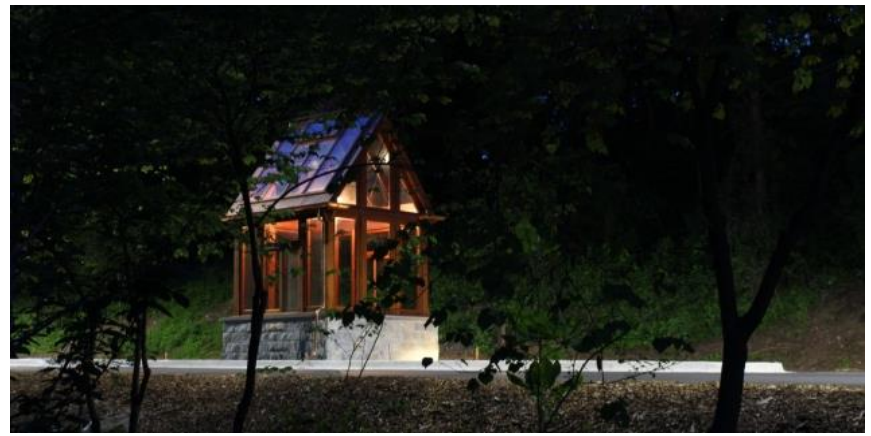
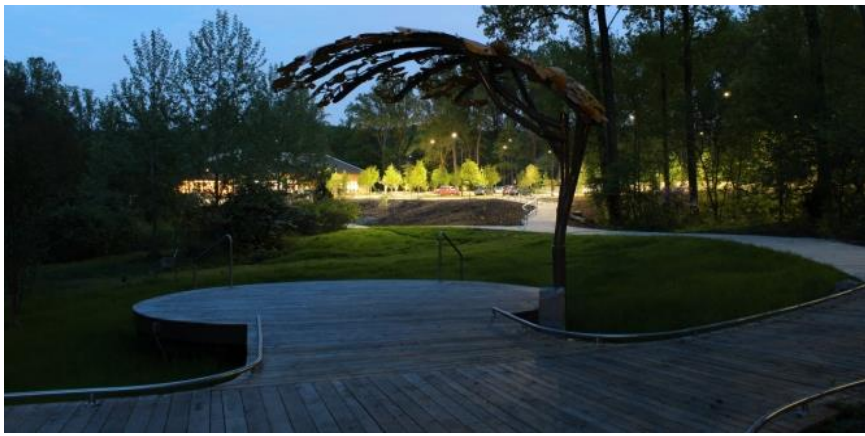




CHANGING PERSPECTIVES: **PLANTING FOR THE FUTURE**

2016 AMERICAN PUBLIC GARDENS ASSOCIATION ANNUAL CONFERENCE





CHANGING PERSPECTIVES: **PLANTING FOR THE FUTURE**

2016 AMERICAN PUBLIC GARDENS ASSOCIATION ANNUAL CONFERENCE



Questions?

Claire Sawyers

csawyer1@swarthmore.edu

Debra Gilmore

gilmore@gilmorelight.com

Lisa Delplace

led@ovsla.com

Stephanie Oberle

Stephanie.Oberle@montgomeryparks.org



CHANGING PERSPECTIVES: **PLANTING FOR THE FUTURE**

2016 AMERICAN PUBLIC GARDENS ASSOCIATION ANNUAL CONFERENCE

