

# Preserving 20th Century Garden Design Excellence While Adapting As Resilient 21st Century Public Gardens

## Part 1: Buying Scuba Gear for Visitors

Ian Simpkins, Deputy Director for Horticulture and Urban Agriculture  
Vizcaya Museum and Gardens



CHANGING PERSPECTIVES: **PLANTING FOR THE FUTURE**

2016 AMERICAN PUBLIC GARDENS ASSOCIATION ANNUAL CONFERENCE





CHANGING PERSPECTIVES: **PLANTING FOR THE FUTURE**

2016 AMERICAN PUBLIC GARDENS ASSOCIATION ANNUAL CONFERENCE





# CHANGING PERSPECTIVES: **PLANTING FOR THE FUTURE**

2016 AMERICAN PUBLIC GARDENS ASSOCIATION ANNUAL CONFERENCE





# CHANGING PERSPECTIVES: **PLANTING FOR THE FUTURE**

2016 AMERICAN PUBLIC GARDENS ASSOCIATION ANNUAL CONFERENCE





# CHANGING PERSPECTIVES: PLANTING FOR THE FUTURE

2016 AMERICAN PUBLIC GARDENS ASSOCIATION ANNUAL CONFERENCE





# CHANGING PERSPECTIVES: **PLANTING FOR THE FUTURE**

2016 AMERICAN PUBLIC GARDENS ASSOCIATION ANNUAL CONFERENCE





# CHANGING PERSPECTIVES: **PLANTING FOR THE FUTURE**

2016 AMERICAN PUBLIC GARDENS ASSOCIATION ANNUAL CONFERENCE



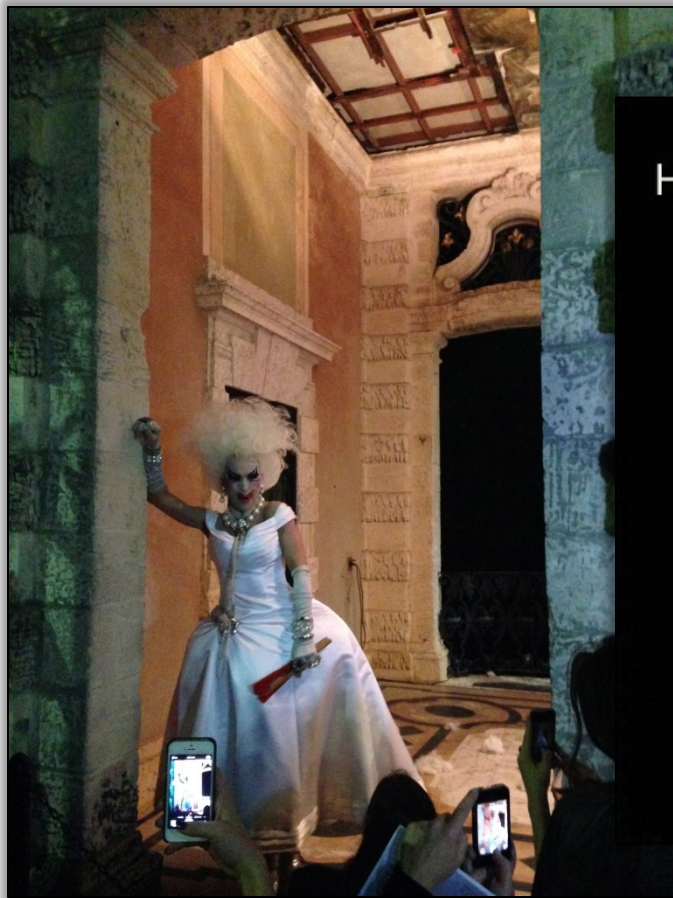


CHANGING PERSPECTIVES: **PLANTING FOR THE FUTURE**

2016 AMERICAN PUBLIC GARDENS ASSOCIATION ANNUAL CONFERENCE

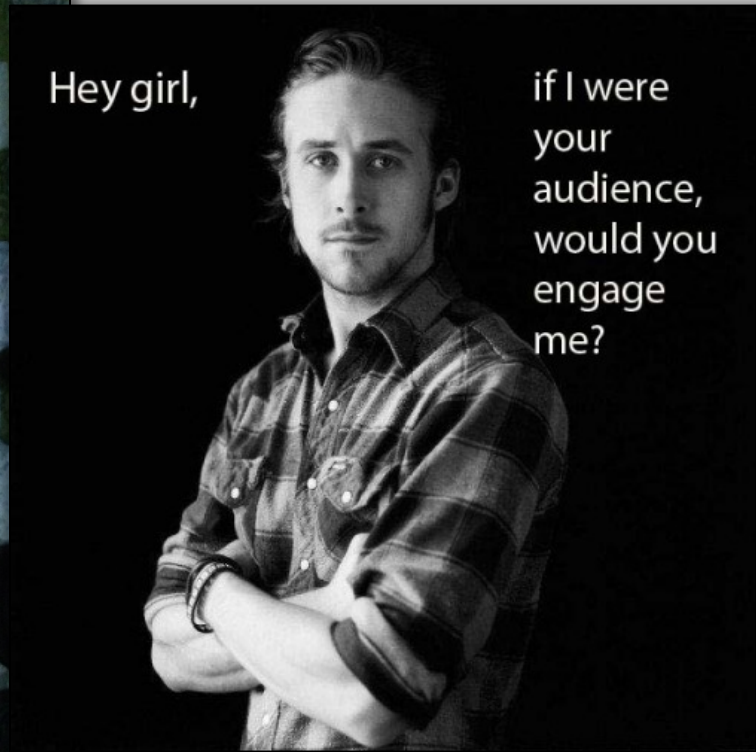






Hey girl,

if I were  
your  
audience,  
would you  
engage  
me?



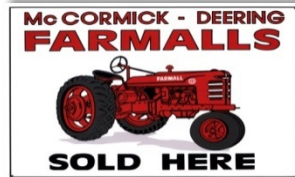
# CHANGING PERSPECTIVES: PLANTING FOR THE FUTURE

2016 AMERICAN PUBLIC GARDENS ASSOCIATION ANNUAL CONFERENCE





*James Deering*



CHANGING PERSPECTIVES: **PLANTING FOR THE FUTURE**

2016 AMERICAN PUBLIC GARDENS ASSOCIATION ANNUAL CONFERENCE





# CHANGING PERSPECTIVES: PLANTING FOR THE FUTURE

2016 AMERICAN PUBLIC GARDENS ASSOCIATION ANNUAL CONFERENCE



# VIZCAYA

CULTURAL LANDSCAPE REPORT  
STEWARDSHIP & MANAGEMENT PLAN



VOLUME 1 OF 2

VIZCAYA MUSEUM & GARDENS  
THE VIZCAYANS, INC.

HERITAGE LANDSCAPES LLC  
PRESERVATION LANDSCAPE ARCHITECTS & PLANNERS

FEBRUARY 2011

## CHAPTER 7: VIZCAYA LANDSCAPE RENAISSANCE



21<sup>ST</sup> CENTURY PRESERVATION & STEWARDSHIP

### A: VIZCAYA LANDSCAPE STEWARDSHIP PHILOSOPHY & OBJECTIVES

The Vizcaya landscape today exhibits an evolved character different from that of the Deering era appearance. As a result, preservation intervention is needed to recapture aspects of the former landscape character and features so that the rich history of the property can be effectively imagined, experienced, and interpreted. This chapter discusses the selection of a preferred treatment approach for landscape renewal. Recapture of the 1925 Deering era is discussed through the application of Preservation and Restoration with aspects of Rehabilitation and Reconstruction. Due to variations in history, authenticity and current conditions, all four preservation approaches are appropriate to apply to the renewal of specific components of the Vizcaya landscape through deliberate interventions and management.

The compelling qualities and design of the Vizcaya landscape are thoroughly documented in Chapters 1 to 6. This detailed background presents landscape history, evolution, and current conditions with emphasis on the early 20th century landscape and natural communities of the James Deering era. The collection of historic imagery and period plans presents the overall character and details through time, providing a deep and broad documentary basis and analysis that together underpin landscape preservation and management recommendations described in this chapter addressing primarily the cultural landscape and the following, Chapter 8, for natural communities.

Working from the detailed documentary understanding of landscape origins and development under plans by Chalfin, Hoffman, Suárez, and the whole of Deering's team, this chapter explores a preservation approach through the four treatment alternatives. As defined in federal guidance for historic properties, Preservation, Restoration, Rehabilitation, and Reconstruction are each viable conceptual approaches to treatment intervention. These four strategies are tested in terms of their application to the Vizcaya landscape. From there, the recommended preservation treatment interventions are discussed in some depth as they relate to specific issues and opportunities throughout the site. This chapter focuses on the overall estate with specific recommendations for the gardens and the designed landscape, while Chapter 8 focuses on natural communities. The chapter concludes with a synopsis of the overall preservation treatment approach, bringing the landscape to Deering brilliance while accommodating current needs.

CHAPTER 7, PAGE 1

2016  
MIAMI

CHANGING PERSPECTIVES: PLANTING FOR THE FUTURE

2016 AMERICAN PUBLIC GARDENS ASSOCIATION ANNUAL CONFERENCE





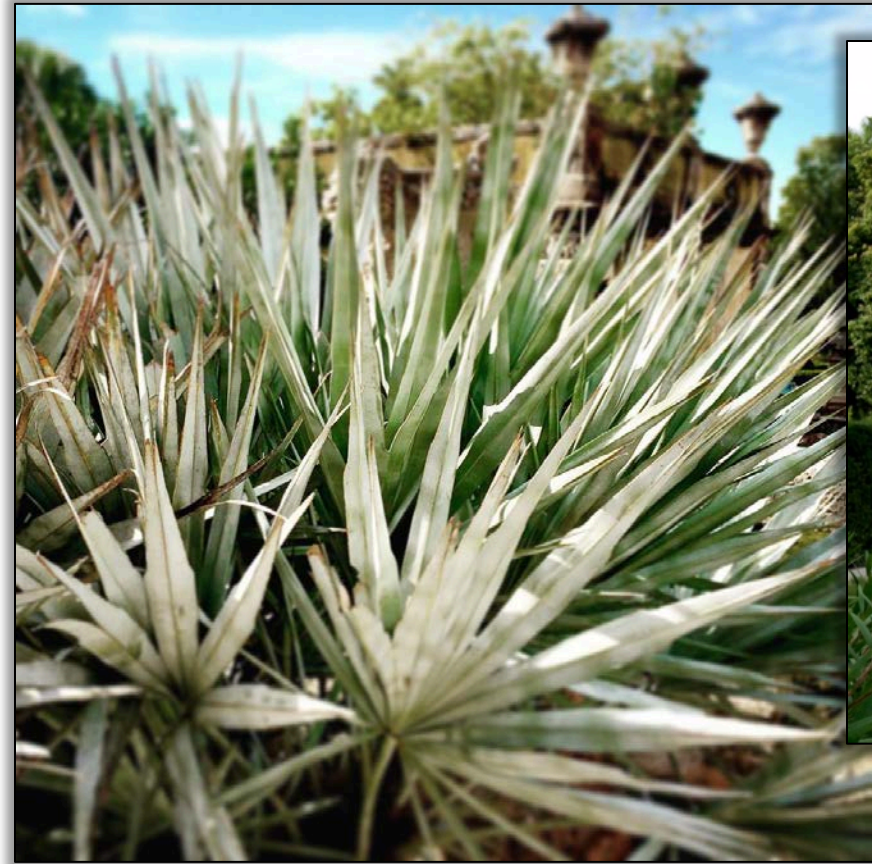
Vizcaya Museum & Gardens  
 Seersucker Social  
[www.memoryboothfl.com](http://www.memoryboothfl.com)



# CHANGING PERSPECTIVES: PLANTING FOR THE FUTURE

2016 AMERICAN PUBLIC GARDENS ASSOCIATION ANNUAL CONFERENCE





# CHANGING PERSPECTIVES: PLANTING FOR THE FUTURE

2016 AMERICAN PUBLIC GARDENS ASSOCIATION ANNUAL CONFERENCE





*After a hard day*

**Pompeii** EXPO 2000 11  
CASUAL FURNITURE COLLECTION

Circle 180

A Division of Miami Metal Products, Inc.  
Established 1955

EXECUTIVE OFFICES AND FACTORY:  
260 N.W. 20th STREET, MIAMI, FL 33137 • (305) 578-3800  
SHOWROOMS: LOS ANGELES • SAN FRANCISCO • MIAMI  
• W. PALM BEACH • TAMPA • ATLANTA • DALLAS •  
GRAND CAYMAN ISLAND • MYRTLE BEACH • SEATTLE  
• PHILADELPHIA



# CHANGING PERSPECTIVES: PLANTING FOR THE FUTURE

2016 AMERICAN PUBLIC GARDENS ASSOCIATION ANNUAL CONFERENCE



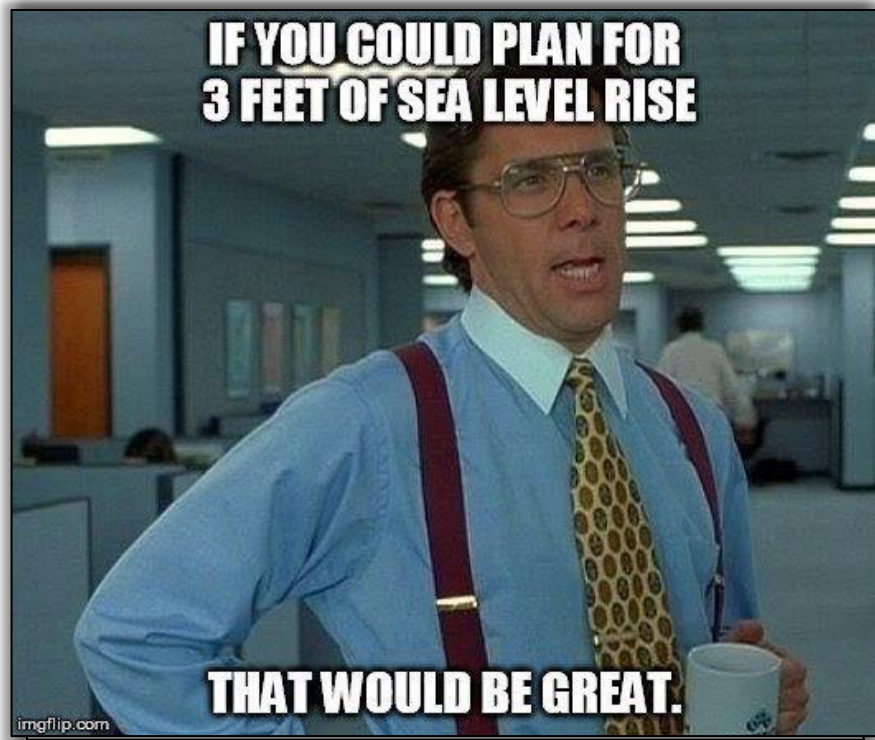


# CHANGING PERSPECTIVES: **PLANTING FOR THE FUTURE**

2016 AMERICAN PUBLIC GARDENS ASSOCIATION ANNUAL CONFERENCE







CHANGING PERSPECTIVES: **PLANTING FOR THE FUTURE**

2016 AMERICAN PUBLIC GARDENS ASSOCIATION ANNUAL CONFERENCE



**MEASURES OF DIVERSITY OF MARINE PLANTS**

Coastal Vizcaya includes six different habitat units, with a total of **69 different species of marine plants**. However, the greatest diversity of marine plants was found on the outside barge area and along the mangroves to the southwest. Red and Brown algae were particularly diverse in these zones. Seagrass meadows tend to be dominated by seagrass species, and thus would have few overall marine plant species. Our survey only included a small part of the large seagrass habitat across Biscayne Bay. The Vizcaya sea wall, a manmade surface, had the fewest marine plant species, and in areas, was dominated by cyanobacteria. Less marine plants were seen in the mangroves to the northeast as these areas were adjacent to a dredged channel. The attached appendix includes the Marine Plant Species list, with details of which species occurred in each habitat unit.

**SUMMARY OF MARINE PLANTS FOUND ACROSS SIX HABITAT UNITS ON MAY 13– 14, 2016**

<u>HABITAT UNIT</u>	<u>TOTAL MARINE PLANTS</u>	<b>Green Algae</b>	<b>Brown Algae</b>	<b>Red Algae</b>	<b>Sea-grasses</b>	<b>Cyano-bacteria</b>
1) Seagrass meadows	<u>16</u>	9	0	4	3	0
2) Vizcaya seawall	<u>21</u>	6	3	10	0	2
3) Eastern Mangrove Creek	<u>27</u>	9	4	9	4	1
4) Eastern Mangroves with riprap	<u>25</u>	9	1	12	3	0
5) Outside of Barge	<u>35</u>	10	5	16	3	1
6) Western Mangroves	<u>33</u>	7	4	18	3	1

**THREATS TO MARINE PLANT BIODIVERSITY FOR COASTAL VIZCAYA**

Coastal Vizcaya faces the real threats of 1) **Coastal pollution** and eutrophication, 2) **Sea Level Rise** and 3) **Extreme Storm Events**. When James Deering built Vizcaya a century ago, sea-level was 8 inches lower, and the waters of Biscayne Bay were brilliant shades of blue, not a soupy green. The estate and gardens represent one of the last stands of mangroves in the upper half of Biscayne Bay, thus the local water quality could be improved. The loss of water quality and clarity has to be one of the biggest changes environmentally in the view from Vizcaya.

Marine Plant diversity can be a method of monitoring near shore environmental condition, and impact of run-off and land-based sources of nutrients entering the near shore environments. Mangroves can provide a valuable “green infrastructure” to protect historic coastal structures from storm and wave damage. Marine plants work with mangroves to stabilize shorelines, process pollutants and provide important habitats for fish and invertebrates.





# CHANGING PERSPECTIVES: PLANTING FOR THE FUTURE

2016 AMERICAN PUBLIC GARDENS ASSOCIATION ANNUAL CONFERENCE





# CHANGING PERSPECTIVES: PLANTING FOR THE FUTURE

2016 AMERICAN PUBLIC GARDENS ASSOCIATION ANNUAL CONFERENCE





# CHANGING PERSPECTIVES: **PLANTING FOR THE FUTURE**

2016 AMERICAN PUBLIC GARDENS ASSOCIATION ANNUAL CONFERENCE





# CHANGING PERSPECTIVES: **PLANTING FOR THE FUTURE**

2016 AMERICAN PUBLIC GARDENS ASSOCIATION ANNUAL CONFERENCE





# CHANGING PERSPECTIVES: **PLANTING FOR THE FUTURE**

2016 AMERICAN PUBLIC GARDENS ASSOCIATION ANNUAL CONFERENCE



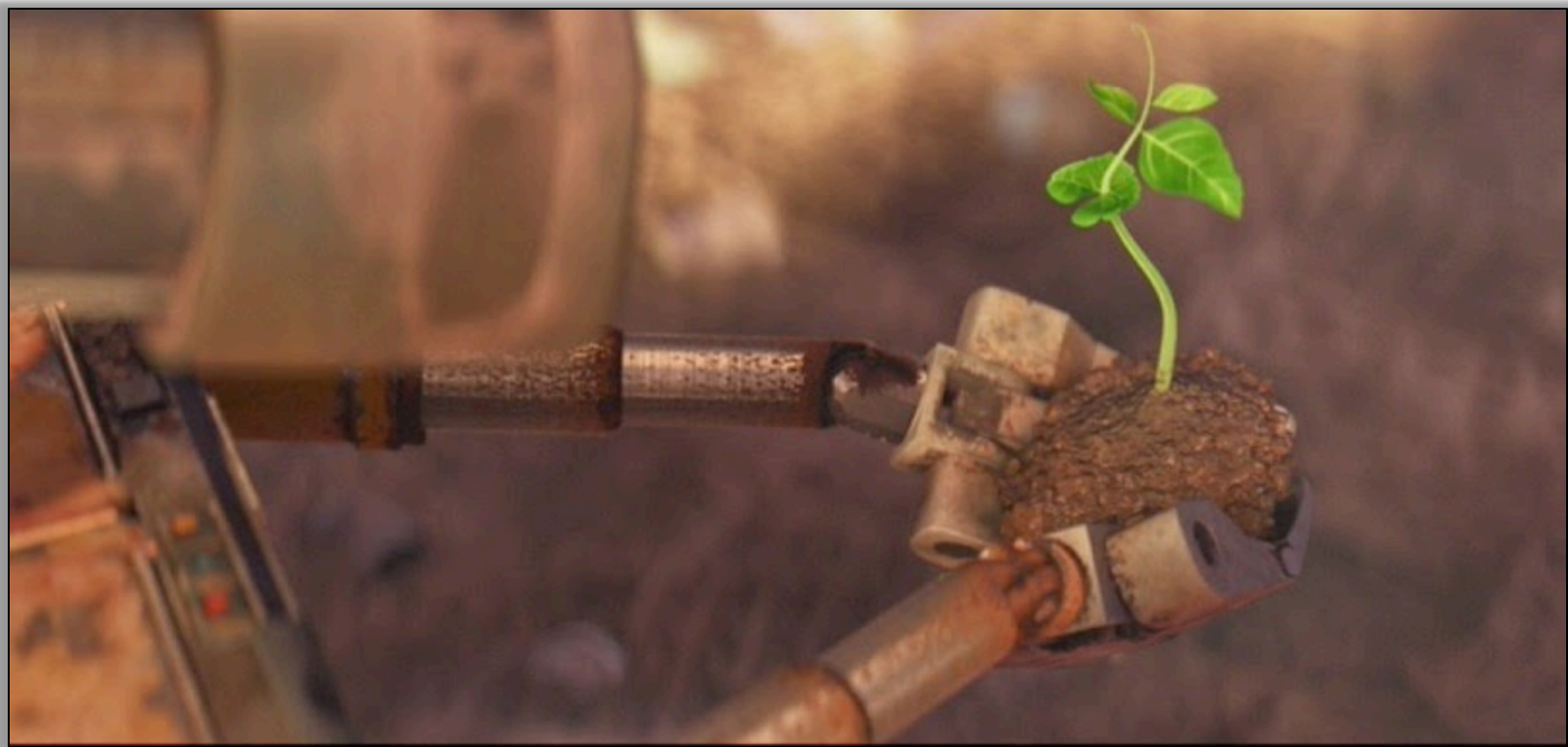


# CHANGING PERSPECTIVES: **PLANTING FOR THE FUTURE**

2016 AMERICAN PUBLIC GARDENS ASSOCIATION ANNUAL CONFERENCE







## CHANGING PERSPECTIVES: **PLANTING FOR THE FUTURE**

2016 AMERICAN PUBLIC GARDENS ASSOCIATION ANNUAL CONFERENCE





CHANGING PERSPECTIVES: **PLANTING FOR THE FUTURE**

2016 AMERICAN PUBLIC GARDENS ASSOCIATION ANNUAL CONFERENCE





# Preserving 20th Century Garden Design Excellence While Adapting As Resilient 21st Century Public Gardens Part 2: Bok Tower

Thomas Woltz, Principal  
Nelson Byrd Woltz Landscape Architects



CHANGING PERSPECTIVES: **PLANTING FOR THE FUTURE**

2016 AMERICAN PUBLIC GARDENS ASSOCIATION ANNUAL CONFERENCE





# CHANGING PERSPECTIVES: **PLANTING FOR THE FUTURE**

2016 AMERICAN PUBLIC GARDENS ASSOCIATION ANNUAL CONFERENCE

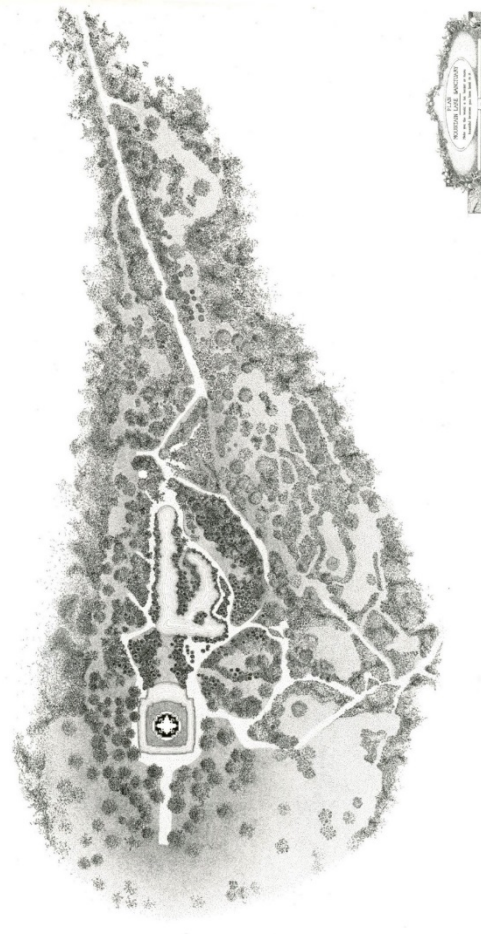




# CHANGING PERSPECTIVES: **PLANTING FOR THE FUTURE**

2016 AMERICAN PUBLIC GARDENS ASSOCIATION ANNUAL CONFERENCE





# CHANGING PERSPECTIVES: PLANTING FOR THE FUTURE

2016 AMERICAN PUBLIC GARDENS ASSOCIATION ANNUAL CONFERENCE





# CHANGING PERSPECTIVES: **PLANTING FOR THE FUTURE**

2016 AMERICAN PUBLIC GARDENS ASSOCIATION ANNUAL CONFERENCE







# CHANGING PERSPECTIVES: **PLANTING FOR THE FUTURE**

2016 AMERICAN PUBLIC GARDENS ASSOCIATION ANNUAL CONFERENCE





# CHANGING PERSPECTIVES: **PLANTING FOR THE FUTURE**

2016 AMERICAN PUBLIC GARDENS ASSOCIATION ANNUAL CONFERENCE





## CHANGING PERSPECTIVES: **PLANTING FOR THE FUTURE**

2016 AMERICAN PUBLIC GARDENS ASSOCIATION ANNUAL CONFERENCE





2016  
MIAMI

# CHANGING PERSPECTIVES: PLANTING FOR THE FUTURE

2016 AMERICAN PUBLIC GARDENS ASSOCIATION ANNUAL CONFERENCE





2016  
MIAMI

# CHANGING PERSPECTIVES: **PLANTING FOR THE FUTURE**

2016 AMERICAN PUBLIC GARDENS ASSOCIATION ANNUAL CONFERENCE





# CHANGING PERSPECTIVES: **PLANTING FOR THE FUTURE**

2016 AMERICAN PUBLIC GARDENS ASSOCIATION ANNUAL CONFERENCE





Bok Tower Gardens 2011 Master Plan - canopy trees not shown



# CHANGING PERSPECTIVES: PLANTING FOR THE FUTURE

2016 AMERICAN PUBLIC GARDENS ASSOCIATION ANNUAL CONFERENCE



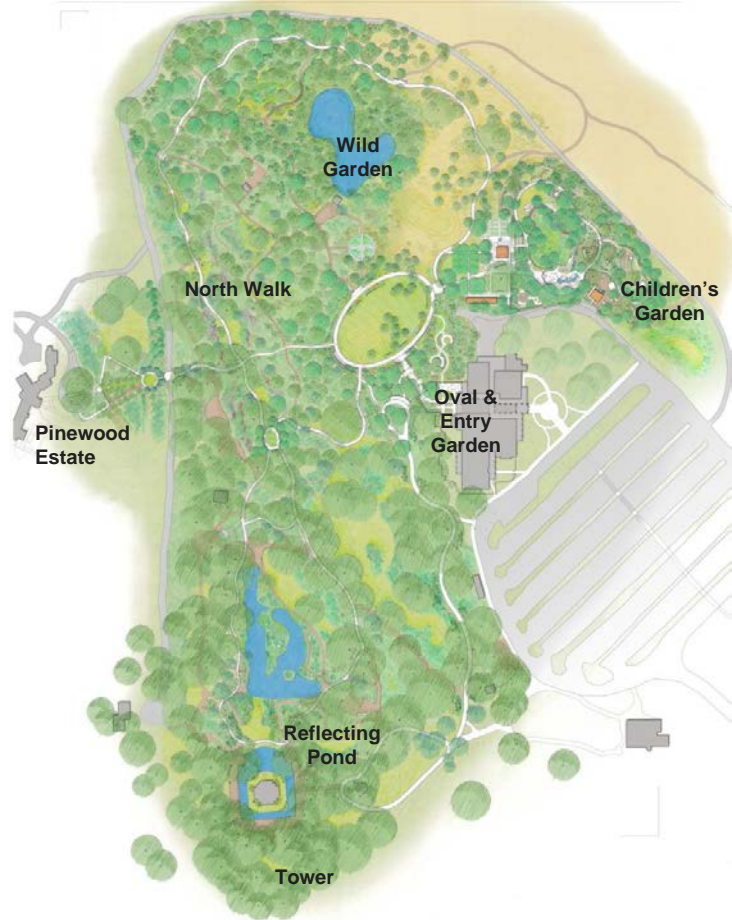


# CHANGING PERSPECTIVES: PLANTING FOR THE FUTURE

2016 AMERICAN PUBLIC GARDENS ASSOCIATION ANNUAL CONFERENCE





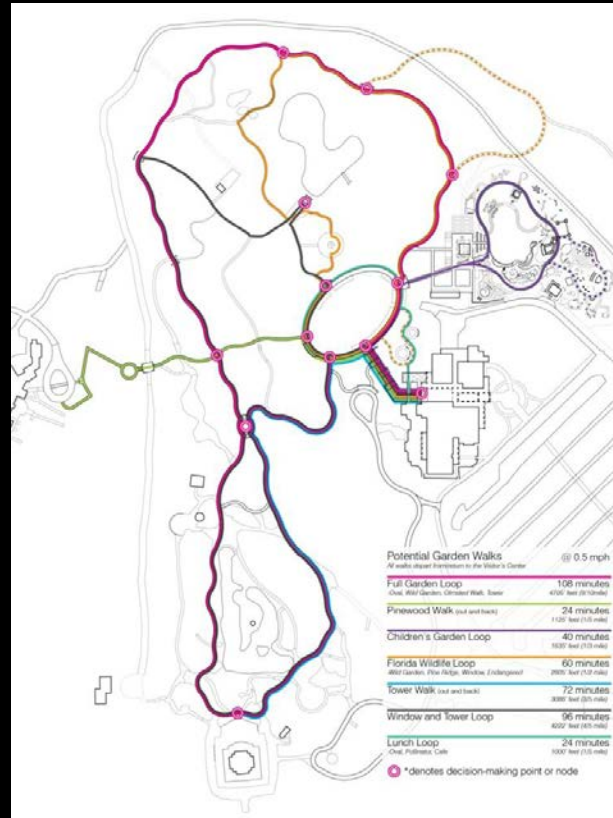
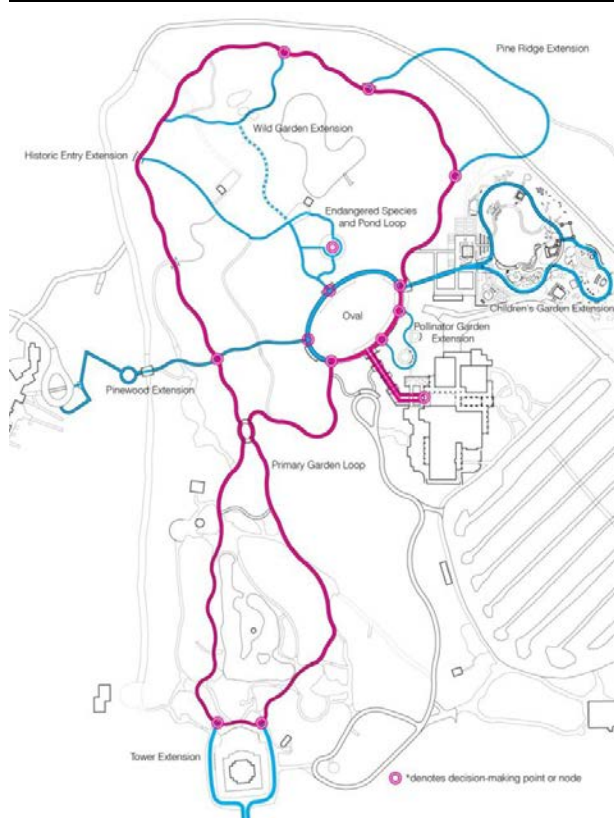


# CHANGING PERSPECTIVES: **PLANTING FOR THE FUTURE**

2016 AMERICAN PUBLIC GARDENS ASSOCIATION ANNUAL CONFERENCE



# CIRCULATION



CHANGING PERSPECTIVES: PLANTING FOR THE FUTURE

2016 AMERICAN PUBLIC GARDENS ASSOCIATION ANNUAL CONFERENCE





# CHANGING PERSPECTIVES: PLANTING FOR THE FUTURE

2016 AMERICAN PUBLIC GARDENS ASSOCIATION ANNUAL CONFERENCE





# CHANGING PERSPECTIVES: **PLANTING FOR THE FUTURE**

2016 AMERICAN PUBLIC GARDENS ASSOCIATION ANNUAL CONFERENCE





aerial  
Innovations



## CHANGING PERSPECTIVES: PLANTING FOR THE FUTURE

2016 AMERICAN PUBLIC GARDENS ASSOCIATION ANNUAL CONFERENCE





# CHANGING PERSPECTIVES: **PLANTING FOR THE FUTURE**

2016 AMERICAN PUBLIC GARDENS ASSOCIATION ANNUAL CONFERENCE





# CHANGING PERSPECTIVES: PLANTING FOR THE FUTURE

2016 AMERICAN PUBLIC GARDENS ASSOCIATION ANNUAL CONFERENCE



# CHILDREN'S GARDEN AND KITCHEN GARDEN



CH







# CHANGING PERSPECTIVES: **PLANTING FOR THE FUTURE**

2016 AMERICAN PUBLIC GARDENS ASSOCIATION ANNUAL CONFERENCE





# CHANGING PERSPECTIVES: **PLANTING FOR THE FUTURE**

2016 AMERICAN PUBLIC GARDENS ASSOCIATION ANNUAL CONFERENCE





# CHANGING PERSPECTIVES: **PLANTING FOR THE FUTURE**

2016 AMERICAN PUBLIC GARDENS ASSOCIATION ANNUAL CONFERENCE





### The Gopher Tortoise

Like a good landlord, the gopher tortoise provides a home for many. More than 420 species of animals have been known to use a single gopher tortoise burrow at some point in their lives.

- Classification: class Reptilia (the reptiles), order Testudines (the turtles)
- Scientific names: *Gopherus polyphemus*
- Age of maturity: 10-15 years
- Nesting season: May-June
- Size: 9-14 inches across the shell
- Feeds: low-growing plants such as prickly pear cacti, grasses, and gopher roots
- Status: now listed as Threatened

**Blind Hole Skink**  
*Blanus cinctus*

**Gopher Cricket**  
*Cratogeomys*

**Florida Mouse**  
*Peromyscus floridanus*

**Eastern Cottontail**  
*Sylvilagus floridanus*

**Eastern Edge Snake**  
*Phrynosoma macleayi*

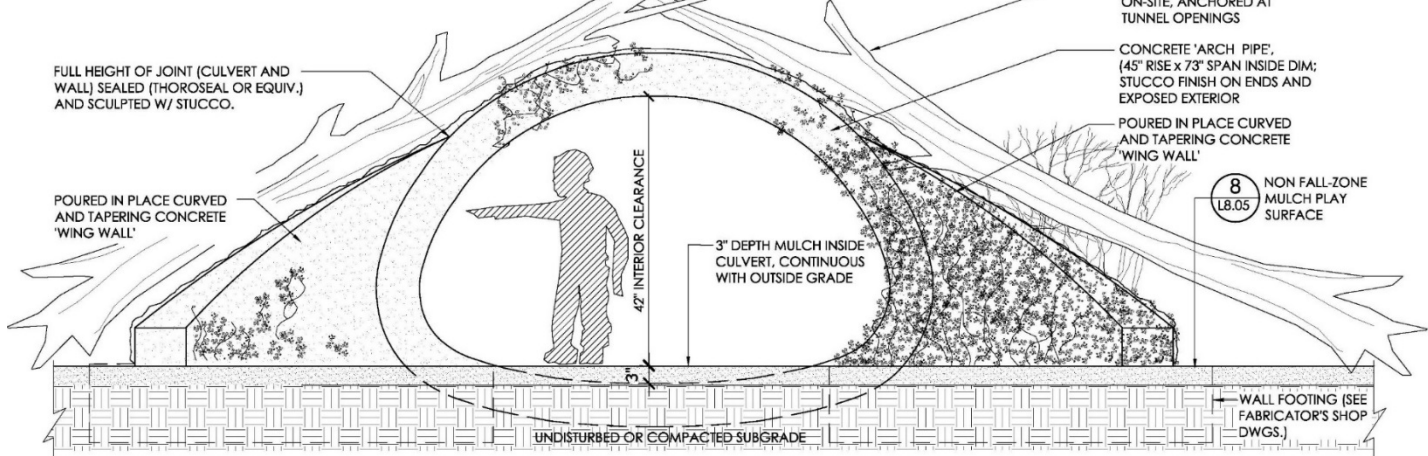
**Chise Wall Lizard**  
*Sceloporus chirostris*

**Eastern Diamondback Rattlesnake**  
*Crotalus durissus*

**Orange Whiptail**  
*Aspidoscelis*

**Gopher Frog**  
*Rana sylvatica*

**Be careful where you step!** Gopher tortoise eggs are often laid in open, sunny areas just outside burrow openings. When the hot sun dries the gopher tortoise can only 1-2 inches long. This makes them easy for ground ants, making juvenile tortoises vulnerable to predation.



**8B** KEYSTONE TUNNEL CROSS-SECTION  
LB.26 SCALE: 1" = 1'-0"



2016  
MIAMI

## CHANGING PERSPECTIVES: **PLANTING FOR THE FUTURE**

2016 AMERICAN PUBLIC GARDENS ASSOCIATION ANNUAL CONFERENCE





# CHANGING PERSPECTIVES: **PLANTING FOR THE FUTURE**

2016 AMERICAN PUBLIC GARDENS ASSOCIATION ANNUAL CONFERENCE

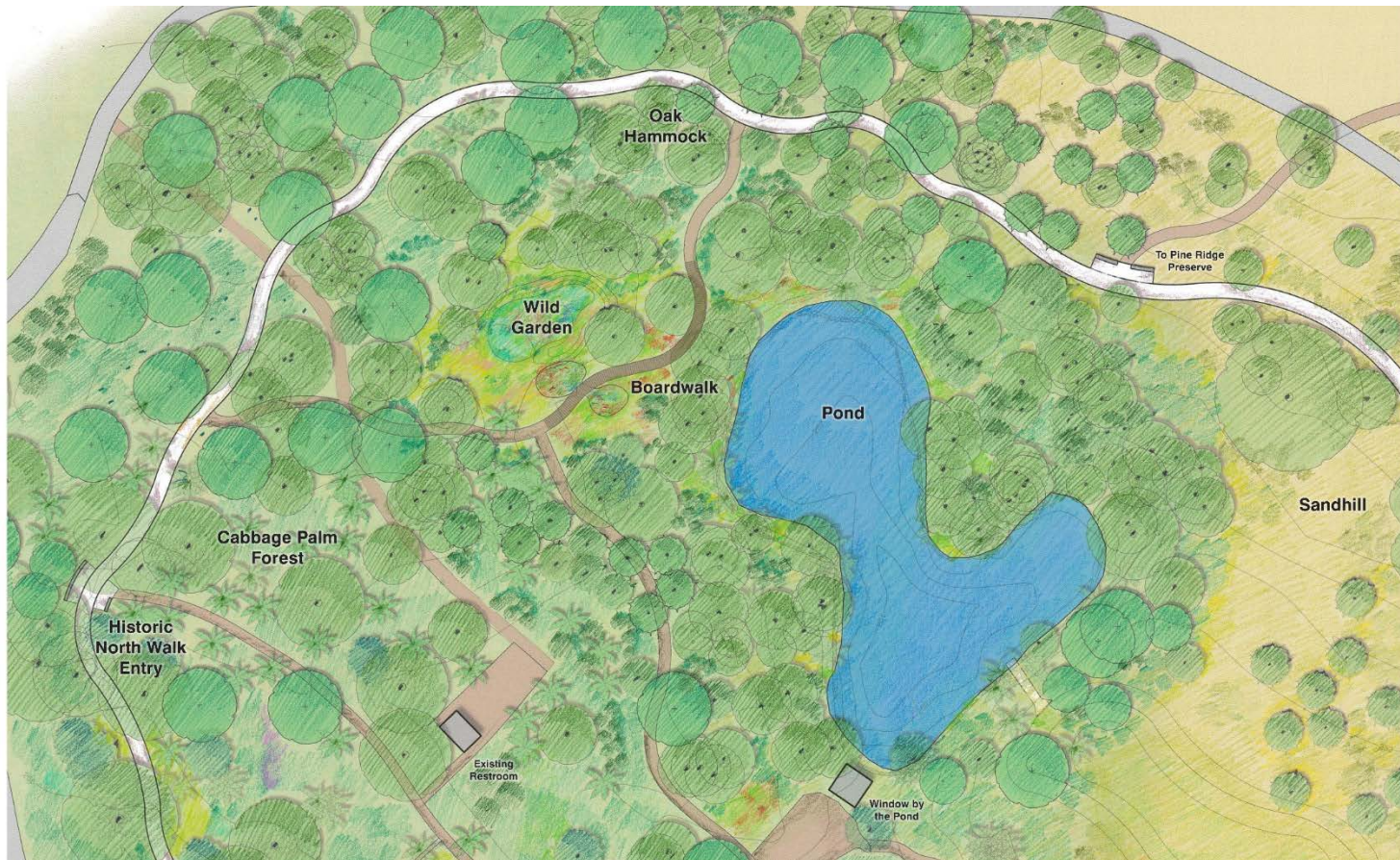




# CHANGING PERSPECTIVES: **PLANTING FOR THE FUTURE**

2016 AMERICAN PUBLIC GARDENS ASSOCIATION ANNUAL CONFERENCE





# CHANGING PERSPECTIVES: PLANTING FOR THE FUTURE

2016 AMERICAN PUBLIC GARDENS ASSOCIATION ANNUAL CONFERENCE







# CHANGING PERSPECTIVES: PLANTING FOR THE FUTURE

2016 AMERICAN PUBLIC GARDENS ASSOCIATION ANNUAL CONFERENCE





# CHANGING PERSPECTIVES: **PLANTING FOR THE FUTURE**

2016 AMERICAN PUBLIC GARDENS ASSOCIATION ANNUAL CONFERENCE





## CHANGING PERSPECTIVES: **PLANTING FOR THE FUTURE**

2016 AMERICAN PUBLIC GARDENS ASSOCIATION ANNUAL CONFERENCE





CHANGING PERSPECTIVES: **PLANTING FOR THE FUTURE**

2016 AMERICAN PUBLIC GARDENS ASSOCIATION ANNUAL CONFERENCE





# CHANGING PERSPECTIVES: **PLANTING FOR THE FUTURE**

2016 AMERICAN PUBLIC GARDENS ASSOCIATION ANNUAL CONFERENCE





# CHANGING PERSPECTIVES: PLANTING FOR THE FUTURE

2016 AMERICAN PUBLIC GARDENS ASSOCIATION ANNUAL CONFERENCE





# CHANGING PERSPECTIVES: **PLANTING FOR THE FUTURE**

2016 AMERICAN PUBLIC GARDENS ASSOCIATION ANNUAL CONFERENCE



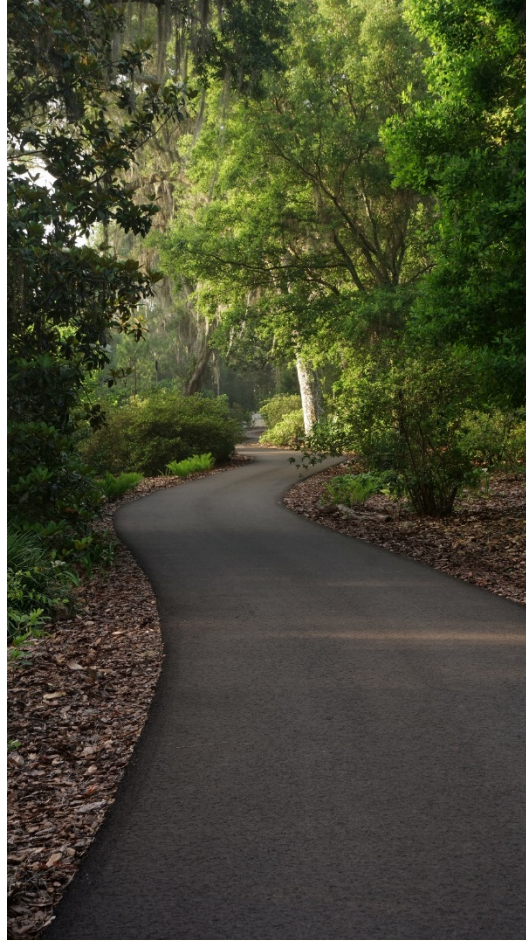


# CHANGING PERSPECTIVES: **PLANTING FOR THE FUTURE**

2016 AMERICAN PUBLIC GARDENS ASSOCIATION ANNUAL CONFERENCE







# CHANGING PERSPECTIVES: **PLANTING FOR THE FUTURE**

2016 AMERICAN PUBLIC GARDENS ASSOCIATION ANNUAL CONFERENCE





# CHANGING PERSPECTIVES: **PLANTING FOR THE FUTURE**

2016 AMERICAN PUBLIC GARDENS ASSOCIATION ANNUAL CONFERENCE





# CHANGING PERSPECTIVES: **PLANTING FOR THE FUTURE**

2016 AMERICAN PUBLIC GARDENS ASSOCIATION ANNUAL CONFERENCE





# CHANGING PERSPECTIVES: **PLANTING FOR THE FUTURE**

2016 AMERICAN PUBLIC GARDENS ASSOCIATION ANNUAL CONFERENCE



# Preserving 20th Century Garden Design Excellence While Adapting As Resilient 21st Century Public Gardens

## Part 3: Coalescing Separate Entities Into One

Rodney Eason, CEO  
Land & Garden Preserve



CHANGING PERSPECTIVES: **PLANTING FOR THE FUTURE**

2016 AMERICAN PUBLIC GARDENS ASSOCIATION ANNUAL CONFERENCE

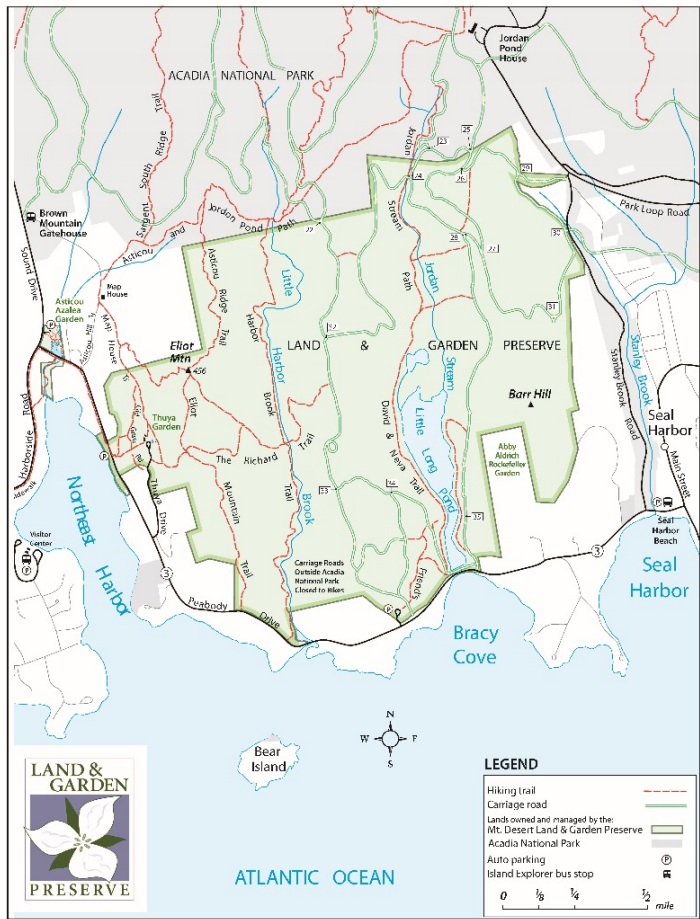




# CHANGING PERSPECTIVES: **PLANTING FOR THE FUTURE**

2016 AMERICAN PUBLIC GARDENS ASSOCIATION ANNUAL CONFERENCE

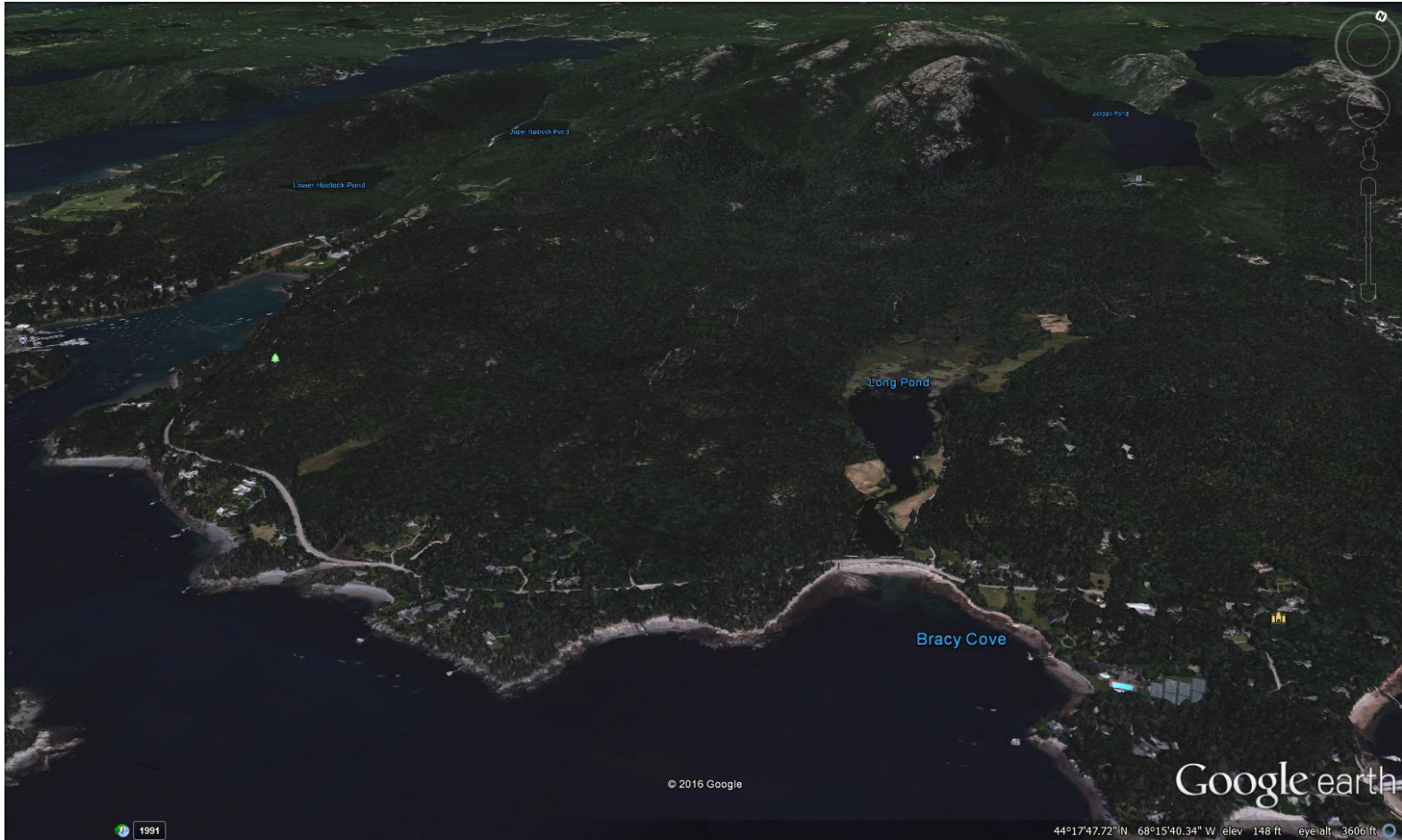




# CHANGING PERSPECTIVES: PLANTING FOR THE FUTURE

2016 AMERICAN PUBLIC GARDENS ASSOCIATION ANNUAL CONFERENCE





Google earth

© 2016 Google

44°17'47.72"N 68°15'40.34" W elev 148 ft eyealt 3606 ft

1991



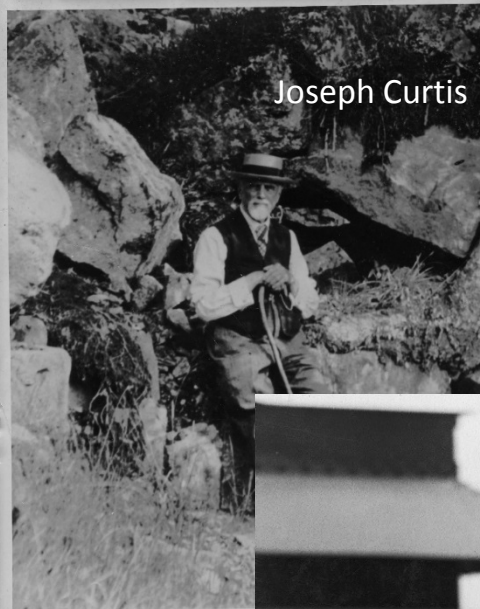
# CHANGING PERSPECTIVES: PLANTING FOR THE FUTURE

2016 AMERICAN PUBLIC GARDENS ASSOCIATION ANNUAL CONFERENCE

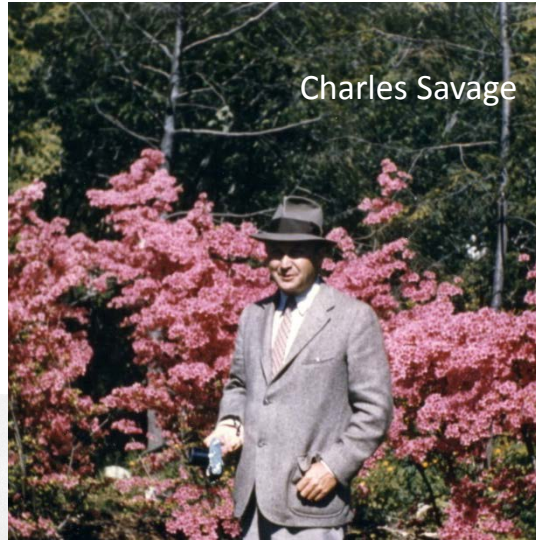




Joseph Curtis



Charles Savage



John D. Rockefeller, Jr.



Beatrix Farrand



CHANGING PERSPECTIVES: **PLANTING FOR THE FUTURE**

2016 AMERICAN PUBLIC GARDENS ASSOCIATION ANNUAL CONFERENCE



"All the News That's Fit to Print"

# The News

VOL. XCVII...No. 32,781.

18 DEAD, DAMAGE \$25,000,000, AS FOREST FIRES SWEEP ON IN WIDE NEW ENGLAND AREA

NO RAINS IN SIGHT  
Flames Racing Through Tinder-Dry Treetops to Menace Towns

900 TRAPPED IN A VILLAGE

Only Business Section is Left at Bar Harbor as Fresh Blaze Nears Resort

By FRANK L. KLUCKHOHN

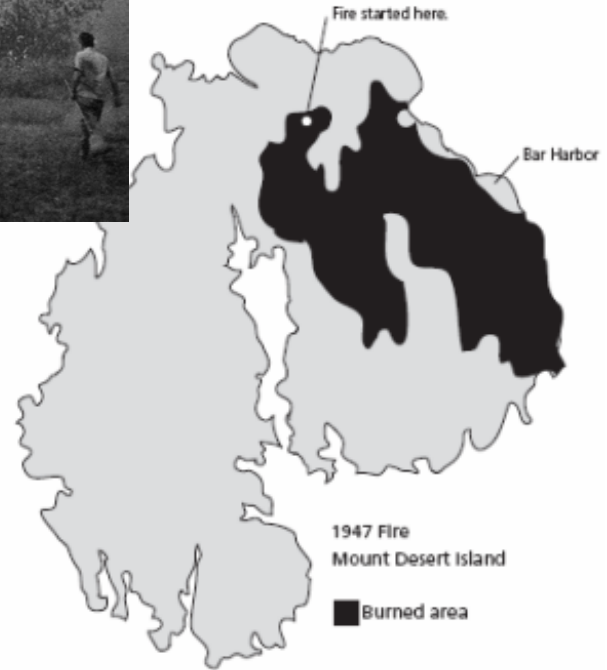
By IRVING SIEGEL

Night of Terror Ends Safely For Bar Harbor's Refugees

3,000 Mothers and Children Find Haven in Neighboring Town After Rescue From Fire—Homes of Well-to-Do in Ruins

By IRVING SIEGEL

BAR HARBOR, Me., Oct. 24—Only a few hundred men remained tonight in this famed summer resort of 4,200 residents. The great sweep forest fire—now under control here—had destroyed about seventy-five homes, including about a dozen palatial mansions.





# CHANGING PERSPECTIVES: PLANTING FOR THE FUTURE

2016 AMERICAN PUBLIC GARDENS ASSOCIATION ANNUAL CONFERENCE





## CHANGING PERSPECTIVES: **PLANTING FOR THE FUTURE**

2016 AMERICAN PUBLIC GARDENS ASSOCIATION ANNUAL CONFERENCE





# CHANGING PERSPECTIVES: **PLANTING FOR THE FUTURE**

2016 AMERICAN PUBLIC GARDENS ASSOCIATION ANNUAL CONFERENCE





# CHANGING PERSPECTIVES: **PLANTING FOR THE FUTURE**

2016 AMERICAN PUBLIC GARDENS ASSOCIATION ANNUAL CONFERENCE

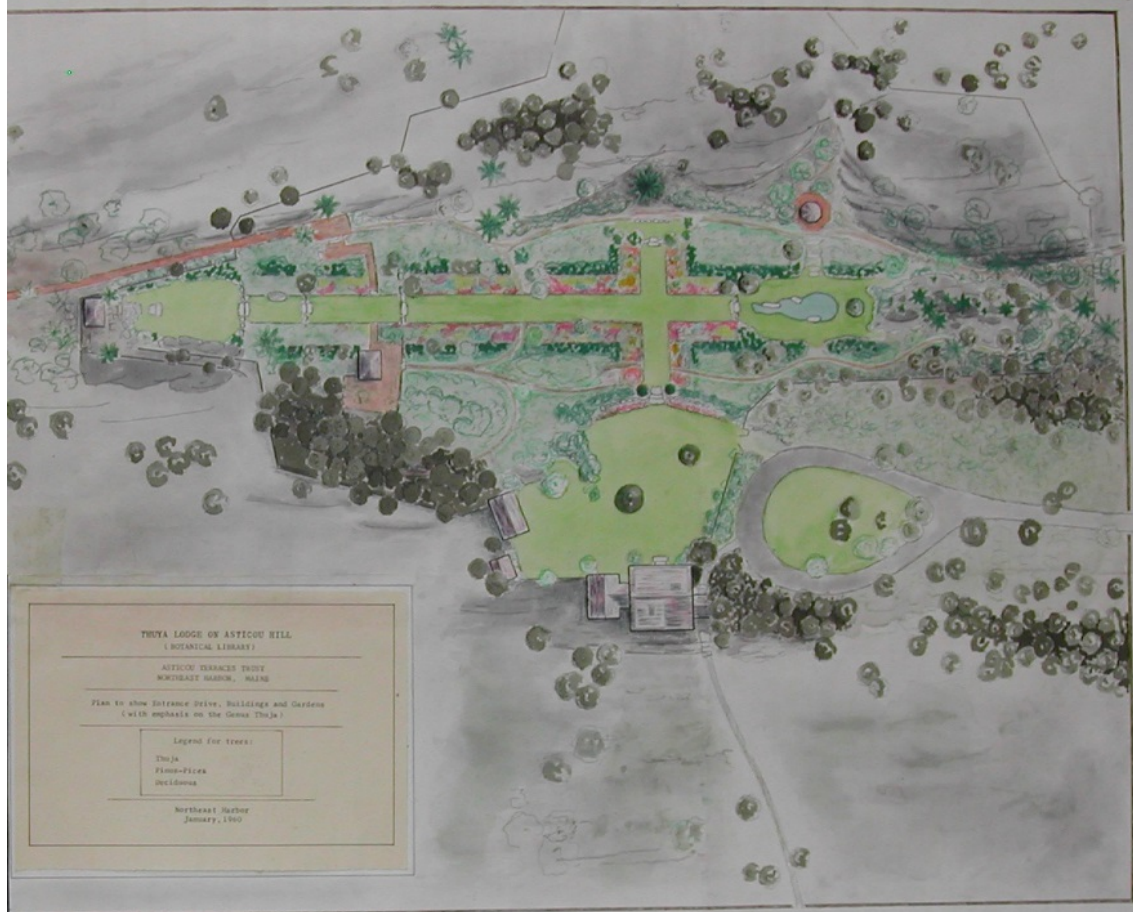




# CHANGING PERSPECTIVES: **PLANTING FOR THE FUTURE**

2016 AMERICAN PUBLIC GARDENS ASSOCIATION ANNUAL CONFERENCE





# CHANGING PERSPECTIVES: PLANTING FOR THE FUTURE

2016 AMERICAN PUBLIC GARDENS ASSOCIATION ANNUAL CONFERENCE







2016  
MIAMI

## CHANGING PERSPECTIVES: **PLANTING FOR THE FUTURE**

2016 AMERICAN PUBLIC GARDENS ASSOCIATION ANNUAL CONFERENCE





# CHANGING PERSPECTIVES: **PLANTING FOR THE FUTURE**

2016 AMERICAN PUBLIC GARDENS ASSOCIATION ANNUAL CONFERENCE





# CHANGING PERSPECTIVES: **PLANTING FOR THE FUTURE**

2016 AMERICAN PUBLIC GARDENS ASSOCIATION ANNUAL CONFERENCE





2016  
MIAMI

## CHANGING PERSPECTIVES: **PLANTING FOR THE FUTURE**

2016 AMERICAN PUBLIC GARDENS ASSOCIATION ANNUAL CONFERENCE





## CHANGING PERSPECTIVES: **PLANTING FOR THE FUTURE**

2016 AMERICAN PUBLIC GARDENS ASSOCIATION ANNUAL CONFERENCE





2016  
MIAMI

## CHANGING PERSPECTIVES: PLANTING FOR THE FUTURE

2016 AMERICAN PUBLIC GARDENS ASSOCIATION ANNUAL CONFERENCE





# CHANGING PERSPECTIVES: **PLANTING FOR THE FUTURE**

2016 AMERICAN PUBLIC GARDENS ASSOCIATION ANNUAL CONFERENCE





CHANGING PERSPECTIVES: **PLANTING FOR THE FUTURE**

2016 AMERICAN PUBLIC GARDENS ASSOCIATION ANNUAL CONFERENCE







# CHANGING PERSPECTIVES: **PLANTING FOR THE FUTURE**

2016 AMERICAN PUBLIC GARDENS ASSOCIATION ANNUAL CONFERENCE





# CHANGING PERSPECTIVES: **PLANTING FOR THE FUTURE**

2016 AMERICAN PUBLIC GARDENS ASSOCIATION ANNUAL CONFERENCE





# CHANGING PERSPECTIVES: **PLANTING FOR THE FUTURE**

2016 AMERICAN PUBLIC GARDENS ASSOCIATION ANNUAL CONFERENCE





# CHANGING PERSPECTIVES: **PLANTING FOR THE FUTURE**

2016 AMERICAN PUBLIC GARDENS ASSOCIATION ANNUAL CONFERENCE





2016  
MIAMI

## CHANGING PERSPECTIVES: **PLANTING FOR THE FUTURE**

2016 AMERICAN PUBLIC GARDENS ASSOCIATION ANNUAL CONFERENCE





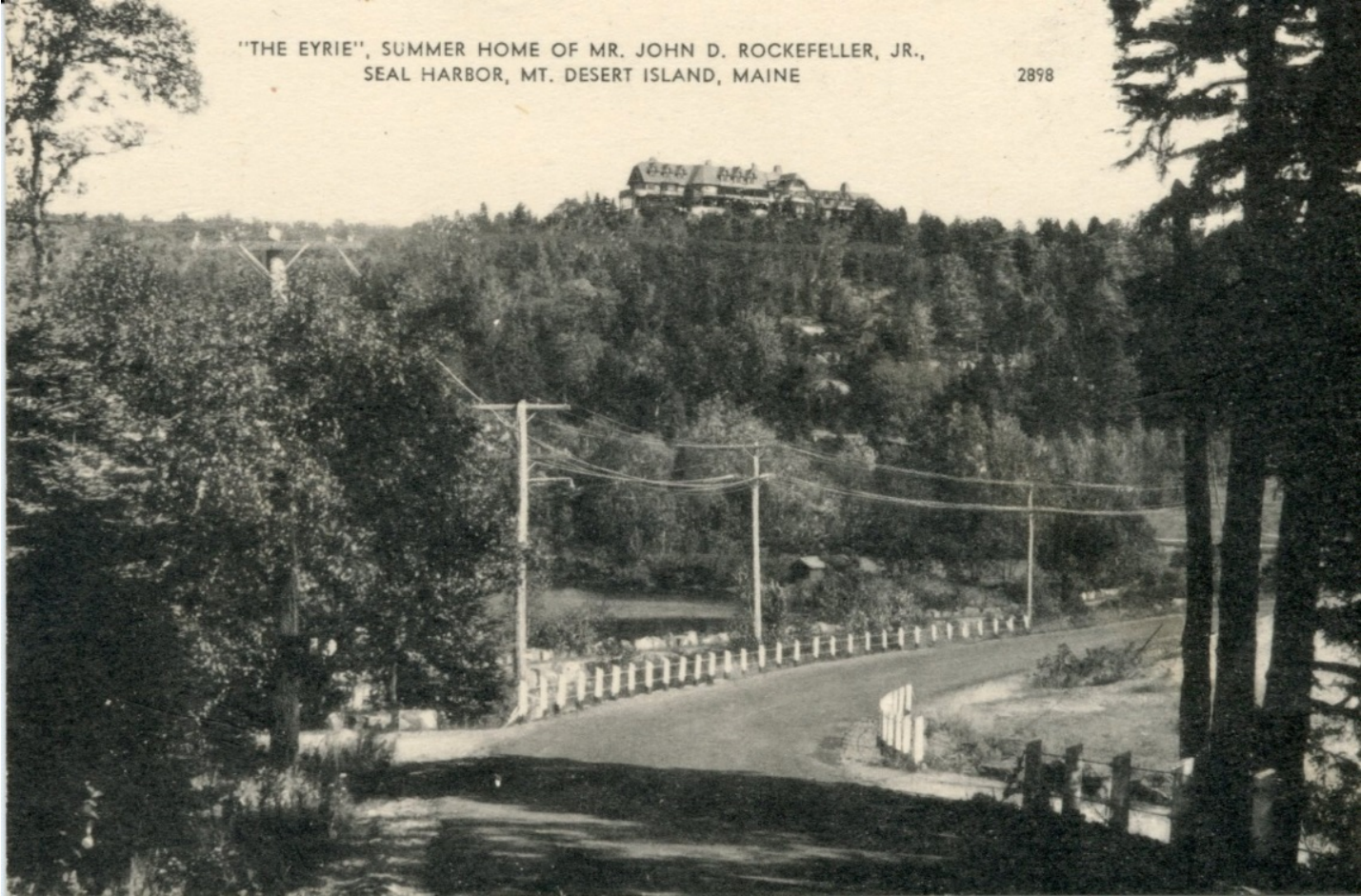
# CHANGING PERSPECTIVES: **PLANTING FOR THE FUTURE**

2016 AMERICAN PUBLIC GARDENS ASSOCIATION ANNUAL CONFERENCE



"THE EYRIE", SUMMER HOME OF MR. JOHN D. ROCKEFELLER, JR.,  
SEAL HARBOR, MT. DESERT ISLAND, MAINE

2898



## CHANGING PERSPECTIVES: **PLANTING FOR THE FUTURE**

2016 AMERICAN PUBLIC GARDENS ASSOCIATION ANNUAL CONFERENCE



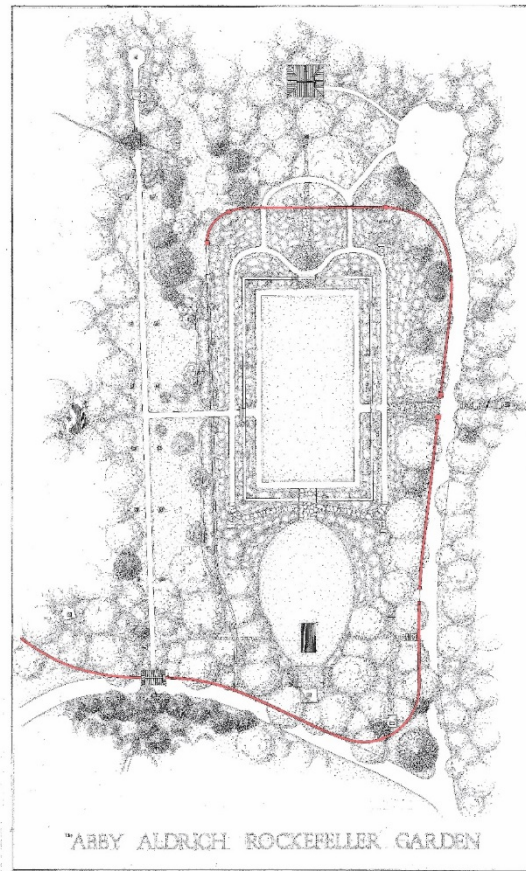


# CHANGING PERSPECTIVES: **PLANTING FOR THE FUTURE**

2016 AMERICAN PUBLIC GARDENS ASSOCIATION ANNUAL CONFERENCE







ABY ALDRICH ROCKEFELLER GARDEN



## CHANGING PERSPECTIVES: **PLANTING FOR THE FUTURE**

2016 AMERICAN PUBLIC GARDENS ASSOCIATION ANNUAL CONFERENCE





# CHANGING PERSPECTIVES: **PLANTING FOR THE FUTURE**

2016 AMERICAN PUBLIC GARDENS ASSOCIATION ANNUAL CONFERENCE





# CHANGING PERSPECTIVES: **PLANTING FOR THE FUTURE**

2016 AMERICAN PUBLIC GARDENS ASSOCIATION ANNUAL CONFERENCE





# CHANGING PERSPECTIVES: **PLANTING FOR THE FUTURE**

2016 AMERICAN PUBLIC GARDENS ASSOCIATION ANNUAL CONFERENCE





# CHANGING PERSPECTIVES: **PLANTING FOR THE FUTURE**

2016 AMERICAN PUBLIC GARDENS ASSOCIATION ANNUAL CONFERENCE





# CHANGING PERSPECTIVES: PLANTING FOR THE FUTURE

2016 AMERICAN PUBLIC GARDENS ASSOCIATION ANNUAL CONFERENCE





# CHANGING PERSPECTIVES: **PLANTING FOR THE FUTURE**

2016 AMERICAN PUBLIC GARDENS ASSOCIATION ANNUAL CONFERENCE





# CHANGING PERSPECTIVES: **PLANTING FOR THE FUTURE**

2016 AMERICAN PUBLIC GARDENS ASSOCIATION ANNUAL CONFERENCE







# CHANGING PERSPECTIVES: PLANTING FOR THE FUTURE

2016 AMERICAN PUBLIC GARDENS ASSOCIATION ANNUAL CONFERENCE





# CHANGING PERSPECTIVES: **PLANTING FOR THE FUTURE**

2016 AMERICAN PUBLIC GARDENS ASSOCIATION ANNUAL CONFERENCE



historical serenity connections management carriage-roads balance sustainability vistas Park LittleLongPond stewardship Asian watershed hiking scenic history management carriage-roads balance sustainability vistas Park LittleLongPond stewardship Asian watershed hiking scenic history



# CHANGING PERSPECTIVES: PLANTING FOR THE FUTURE

2016 AMERICAN PUBLIC GARDENS ASSOCIATION ANNUAL CONFERENCE





# CHANGING PERSPECTIVES: **PLANTING FOR THE FUTURE**

2016 AMERICAN PUBLIC GARDENS ASSOCIATION ANNUAL CONFERENCE

